

Datasheet for ABIN3024235

**anti-Melanoma gp100 antibody****2** Images[Go to Product page](#)

## Overview

Quantity:	100 µg
Target:	Melanoma gp100 (PMEL)
Reactivity:	Human
Host:	Mouse
Clonality:	Monoclonal
Conjugate:	This Melanoma gp100 antibody is un-conjugated
Application:	Immunofluorescence (IF), Flow Cytometry (FACS), Immunohistochemistry (Paraffin-embedded Sections) (IHC (p))

## Product Details

Immunogen:	Extract of pigmented melanoma metastases from lymph nodes (HMB45) and recombinant human protein (PMEL/783) were used as the immunogen for the gp100 antibody cocktail.
Clone:	HMB45-PMEL-783
Isotype:	IgG
Purification:	Protein G affinity chromatography

## Target Details

Target:	Melanoma gp100 (PMEL)
Alternative Name:	Gp100 ( <a href="#">PMEL Products</a> )
Background:	By immunohistochemistry, it specifically recognizes a protein in melanocytes and melanomas. This mAb reacts with junctional and blue nevus cells and variably with fetal and neonatal

## Target Details

melanocytes. Intradermal nevi, normal adult melanocytes, and non-melanocytic cells are negative. It does not stain tumor cells of epithelial, lymphoid, glial, or mesenchymal origin. Metastatic amelanotic melanoma can often be confused with a variety of poorly differentiated carcinomas, large cell lymphomas, and sarcomas using H & E stains alone. It is also difficult to differentiate melanoma from spindle cell carcinomas and various types of mesenchymal neoplasms. This mAb stains fetal and neonatal melanocytes, junctional and blue nevus cells, and malignant melanoma. This mAb also stains Angiomyolipoma (PEComa).

## Application Details

Application Notes: Optimal dilution of the gp100 antibody cocktail should be determined by the researcher.

1. Staining of formalin-fixed tissues requires boiling tissue sections in 10 mM Citrate buffer, pH 6.0, for 10-20 min followed by cooling at RT for 20 min.

2. The prediluted format is supplied in a dropper bottle and is optimized for use in IHC. After epitope retrieval step (if required), drip mAb solution onto the tissue section and incubate at RT for 30 min.\. Flow Cytometry: 0.5-1 µg/million cells in 0.1ml,Immunofluorescence: 0.5-1 µg/mL,Immunohistochemistry (FFPE): 0.5-1 µg/mL for 30 min at RT (1),Prediluted format: incubate for 30 min at RT (2)

Restrictions: For Research Use only

## Handling

Concentration: 0.2 mg/mL

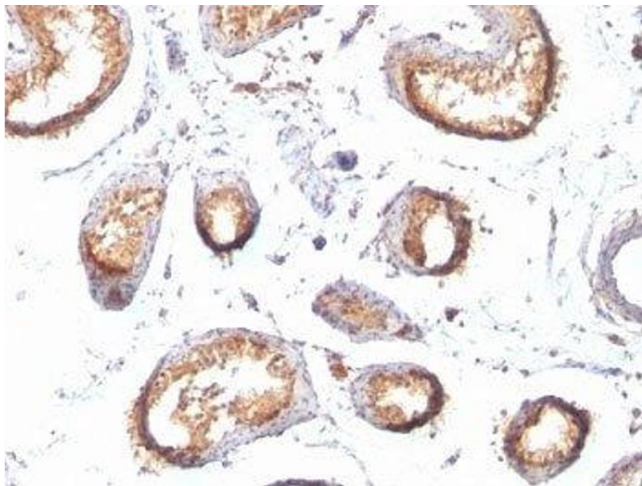
Buffer: 0.2 mg/mL in 1X PBS with 0.1 mg/mL BSA (US sourced) and 0.05 % sodium azide

Preservative: Sodium azide

Precaution of Use: This product contains Sodium azide: a POISONOUS AND HAZARDOUS SUBSTANCE which should be handled by trained staff only.

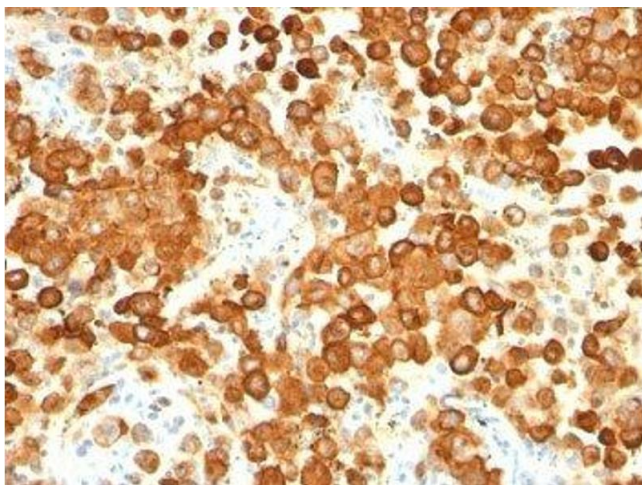
Storage: 4 °C,-20 °C

Storage Comment: Store the gp100 antibody cocktail at 2-8°C (with azide) or aliquot and store at -20°C or colder (without azide).



#### Immunohistochemistry

**Image 1.** Formalin-fixed, paraffin-embedded human testis stained with gp100 antibody (HMB45 + PMEL/783).



#### Immunohistochemistry

**Image 2.** Formalin-fixed, paraffin-embedded human melanoma stained with gp100 antibody (HMB45 + PMEL/783).