



Datasheet for ABIN3024241  
**anti-Melanoma antibody**



[Go to Product page](#)

1 Image

Overview

|              |   |
|--------------|---|
| Quantity:    | 100 µg  |
| Target:      | Melanoma  |
| Reactivity:  | Human, Horse  |
| Host:        | Mouse   |
| Clonality:   | Monoclonal  |
| Conjugate:   | This Melanoma antibody is un-conjugated   |
| Application: | Immunohistochemistry (Paraffin-embedded Sections) (IHC (p)), Immunofluorescence (IF), Flow Cytometry (FACS) |

Product Details

|                      |   |
|----------------------|---|
| Immunogen:           | Membranes from a human melanoma metastasis were used as the immunogen for this Melanoma antibody (gp100). |
| Clone:               | NKI-beteb   |
| Isotype:             | IgG2b kappa   |
| No Cross-Reactivity: | Rat (Rattus)  |
| Purification:        | Protein G affinity chromatography   |

Target Details

|           |                                   |
|-----------|-----------------------------------|
| Target:   | Melanoma                          |
| Abstract: | <a href="#">Melanoma Products</a> |

## Target Details

---

**Background:** By immunohistochemistry, this melanoma gp100 antibody specifically recognizes a protein in melanocytes and melanomas. It reacts with junctional and blue nevus cells and variably with fetal and neonatal melanocytes. Intradermal nevi, normal adult melanocytes, and non-melanocytic cells are negative. It does not stain tumor cells of epithelial, lymphoid, glial, or mesenchymal origin. The melanoma antibody labels formalin/paraffin melanomas and other tumors showing melanocytic differentiation.

**Gene ID:** 6490

## Application Details

---

**Application Notes:** Differences in protocols and secondaries may require the gp100 antibody to be titrated up or down for optimal performance.

1. Staining of formalin-fixed tissues requires boiling tissue sections in 10 mM citrate buffer, pH 6.0, for 10-20 min followed by cooling at RT for 20 minutes. \. FACS: 0.5-1 µg/million cells,IF: 1-2 µg/mL,IHC (FFPE): 1-2 µg/mL for 30 minutes at RT (1)

**Restrictions:** For Research Use only

## Handling

---

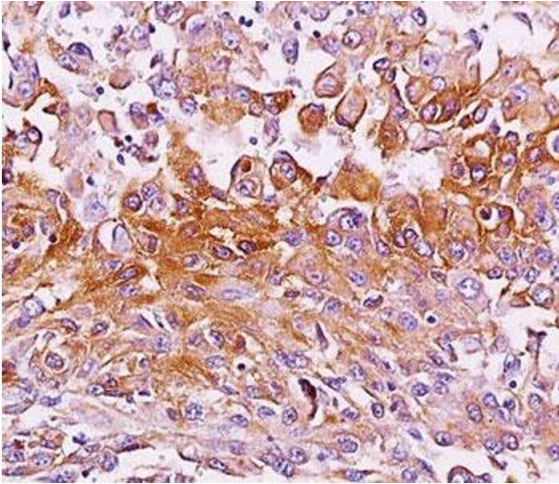
**Concentration:** 1 mg/mL

**Buffer:** 1 mg/mL in 1X PBS, BSA free, sodium azide free

**Preservative:** Azide free

**Storage:** 4 °C,-20 °C

**Storage Comment:** Store the Melanoma antibody at 2-8°C (with azide) or aliquot and store at -20°C or colder (without azide).



### Immunohistochemistry

**Image 1.** IHC testing of melanoma tissue stained with Melanoma antibody (NKI-beteb).