

Datasheet for ABIN3024536  
**anti-Chromogranin A antibody**



[Go to Product page](#)

4 Images

## Overview

Quantity:	100 µg
Target:	Chromogranin A (CHGA)
Reactivity:	Human, Rat
Host:	Mouse
Clonality:	Monoclonal
Conjugate:	This Chromogranin A antibody is un-conjugated
Application:	Immunofluorescence (IF), Flow Cytometry (FACS), Immunohistochemistry (Paraffin-embedded Sections) (IHC (p))

## Product Details

Immunogen:	Recombinant human protein was used as the immunogen for the Chromogranin A antibody.
Clone:	CHGA-798
Isotype:	IgG1 kappa
Purification:	Protein G affinity chromatography

## Target Details

Target:	Chromogranin A (CHGA)
Alternative Name:	Chromogranin A ( <a href="#">CHGA Products</a> )
Background:	Chromogranin A is present in neuroendocrine cells throughout the body, including the neuroendocrine cells of the large and small intestine, adrenal medulla and pancreatic islets. It is an excellent marker for carcinoid tumors, pheochromocytomas, paragangliomas, and other

## Target Details

---

neuroendocrine tumors. Co-expression of chromogranin A and neuron specific enolase (NSE) is common in neuroendocrine neoplasms. Reportedly, co-expression of certain keratins and chromogranin indicates neuroendocrine lineage. The presence of strong anti-chromogranin staining and absence of anti-keratin staining should raise the possibility of paraganglioma. The co-expression of chromogranin and NSE is typical of neuroendocrine neoplasms. Most pituitary adenomas and prolactinomas readily express chromogranin.

Pathways: [Negative Regulation of Hormone Secretion](#), [cAMP Metabolic Process](#), [Regulation of G-Protein Coupled Receptor Protein Signaling](#)

## Application Details

---

Application Notes: Optimal dilution of the Chromogranin A antibody should be determined by the researcher.

1. Staining of formalin-fixed tissues requires boiling tissue sections in 10 mM Citrate buffer, pH 6.0, for 10-20 min followed by cooling at RT for 20 minutes
2. The prediluted format is supplied in a dropper bottle and is optimized for use in IHC. After epitope retrieval step (if required), drip mAb solution onto the tissue section and incubate at RT for 30 min.\. Flow Cytometry: 0.5-1 µg/million cells in 0.1ml,Immunofluorescence: 0.5-1 µg/mL,Immunohistochemistry (FFPE): 0.25-0.5 µg/mL for 30 min at RT (1),Prediluted format : incubate for 30 min at RT (2)

Restrictions: For Research Use only

## Handling

---

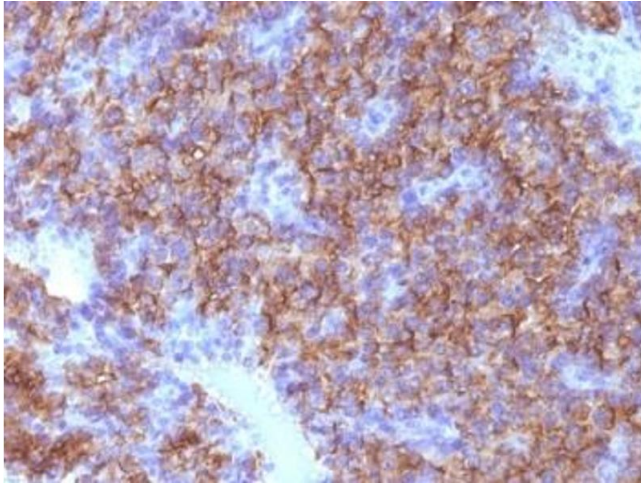
Concentration: 1 mg/mL

Buffer: 1 mg/mL in 1X PBS, BSA free, sodium azide free

Preservative: Azide free

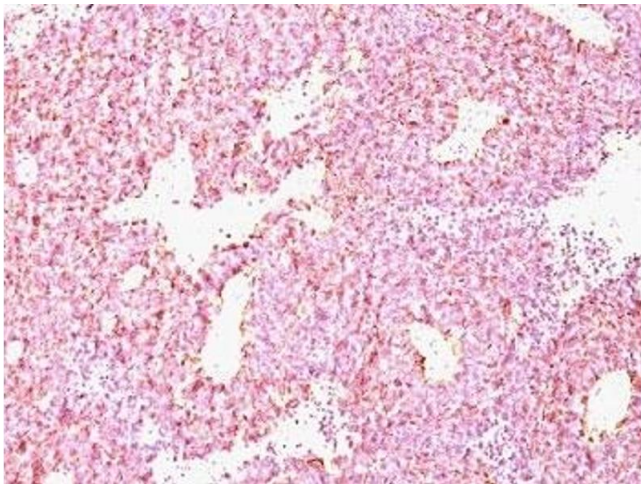
Storage: 4 °C,-20 °C

Storage Comment: Store the Chromogranin A antibody at 2-8°C (with azide) or aliquot and store at -20°C or colder (without azide).



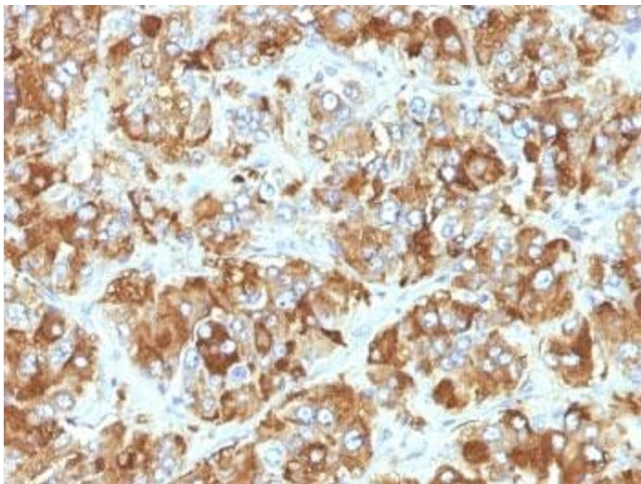
**Immunohistochemistry (Formalin-fixed Paraffin-embedded Sections)**

**Image 1.** Formalin-fixed, paraffin-embedded human parathyroid stained with Chromogranin A antibody (CHGA/798)



**Immunohistochemistry**

**Image 2.** Formalin-paraffin human SC lung carcinoma stained with Chromogranin A antibody (CHGA/798)



**Immunohistochemistry (Formalin-fixed Paraffin-embedded Sections)**

**Image 3.** Formalin-fixed, paraffin-embedded human adrenal gland stained with Chromogranin A antibody (CHGA/798)

Please check the [product details page](#) for more images. Overall 4 images are available for ABIN3024536.