

Datasheet for ABIN3024725
anti-EpCAM antibody (Cytoplasmic Domain)



[Go to Product page](#)

5 Images

Overview

Quantity:	100 µg
Target:	EpCAM (EPCAM)
Binding Specificity:	Cytoplasmic Domain
Reactivity:	Human, Mouse, Rat
Host:	Mouse
Clonality:	Monoclonal
Conjugate:	This EpCAM antibody is un-conjugated
Application:	Western Blotting (WB), Flow Cytometry (FACS), Immunofluorescence (IF), Immunohistochemistry (Paraffin-embedded Sections) (IHC (p))

Product Details

Immunogen:	A recombinant human protein fragment from the cytoplasmic domain was used as the immunogen for the EpCAM antibody.
Clone:	EGP40-1110
Isotype:	IgG2b kappa
Purification:	Protein G affinity chromatography

Target Details

Target:	EpCAM (EPCAM)
Alternative Name:	EpCAM (EPCAM Products)

Target Details

Background: EGP40 is a 40-43 kDa transmembrane epithelial glycoprotein, also identified as epithelial specific antigen (ESA), or epithelial cellular adhesion molecule (Ep-CAM). It is expressed on baso-lateral cell surface in most simple epithelia and a vast majority of carcinomas. This antibody has been used to distinguish adenocarcinoma from pleural mesothelioma and hepatocellular carcinoma. This antibody is also useful in distinguishing serous carcinomas of the ovary from mesothelioma.

Application Details

Application Notes: Optimal dilution of the EpCAM antibody should be determined by the researcher.

1. Staining of formalin-fixed tissues requires boiling tissue sections in 10 mM Citrate buffer, pH 6.0, for 10-20 min followed by cooling at RT for 20 min
2. The prediluted format is supplied in a dropper bottle and is optimized for use in IHC. After epitope retrieval step (if required), drip mAb solution onto the tissue section and incubate at RT for 30 min.\. Flow Cytometry: 0.5-1 µg/million cells in 0.1ml,Immunofluorescence: 1-2 µg/mL,Western blot: 0.5-1 µg/mL,Immunohistochemistry (FFPE): 0.5-1 µg/mL for 30 min at RT (1),Prediluted format : incubate for 30 min at RT (2)

Restrictions: For Research Use only

Handling

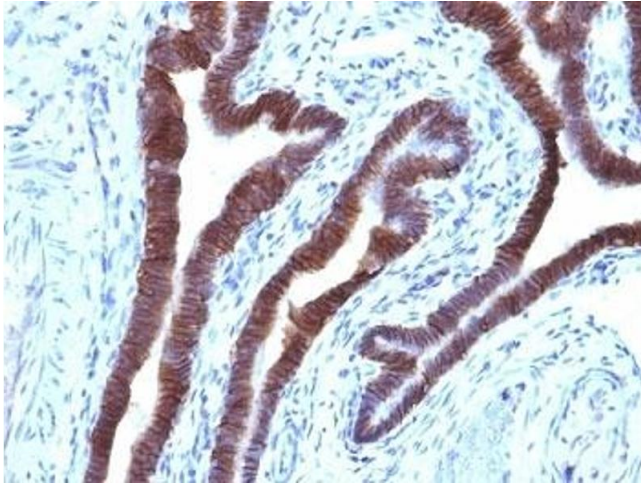
Concentration: 1 mg/mL

Buffer: 1 mg/mL in 1X PBS, BSA free, sodium azide free

Preservative: Azide free

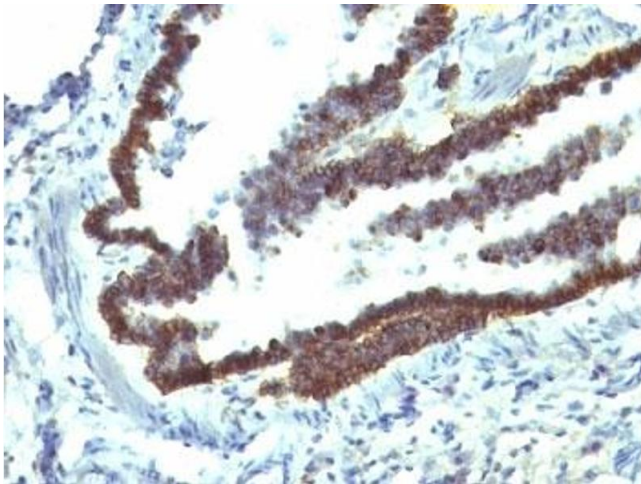
Storage: 4 °C,-20 °C

Storage Comment: Store the EpCAM antibody at 2-8°C (with azide) or aliquot and store at -20°C or colder (without azide).



Immunohistochemistry (Formalin-fixed Paraffin-embedded Sections)

Image 1. Formalin-fixed, paraffin-embedded human ovarian carcinoma stained with EpCAM antibody (EGP40/1110).



Immunohistochemistry (Formalin-fixed Paraffin-embedded Sections)

Image 2. Formalin-fixed, paraffin-embedded rat lung stained with EpCAM antibody (EGP40/1110).



Immunohistochemistry

Image 3. IHC testing of FFPE mouse colon tissue with EpCAM antibody. Required HIER: boil tissue sections in 10mM Citrate buffer, pH 6.0, for 10-20 min followed by cooling at RT for 20 min.

Please check the [product details page](#) for more images. Overall 5 images are available for ABIN3024725.