



[Go to Product page](#)

Datasheet for ABIN3024740

anti-Elastase 3B antibody (AA 82-238)

2 Images

Overview

| | |
|----------------------|---|
| Quantity: | 100 µg |
| Target: | Elastase 3B (ELA3B) |
| Binding Specificity: | AA 82-238 |
| Reactivity: | Human, Mouse, Rat |
| Host: | Mouse |
| Clonality: | Monoclonal |
| Conjugate: | This Elastase 3B antibody is un-conjugated |
| Application: | ELISA, Immunofluorescence (IF), Immunohistochemistry (Paraffin-embedded Sections) (IHC (p)) |

Product Details

| | |
|---------------|---|
| Immunogen: | A partial recombinant protein (aa 82-238) was used as the immunogen for the Elastase 3B antibody. |
| Clone: | ELTS3B-2 |
| Isotype: | IgG1 |
| Purification: | Protein G |

Target Details

| | |
|-------------------|--|
| Target: | Elastase 3B (ELA3B) |
| Alternative Name: | Elastase 3B (ELA3B Products) |

Target Details

Background: Elastases form a subfamily of serine proteases that hydrolyze many proteins in addition to elastin. Humans have six genes which encode the structurally similar proteins: Elastase 1, 2, 2A, 2B, 3A, and 3B. Unlike other elastases, 3B has little elastolytic activity. Like most of the human elastases, 3B is secreted from the pancreas as a zymogen and, like other serine proteases such as trypsin, chymotrypsin and kallikrein, it has a digestive function in the intestine. Elastase 3B preferentially cleaves proteins after alanine residues. It may also function in the intestinal transport and metabolism of cholesterol. Elastases 3A/B have been referred to as Protease E and as Elastase 1, and excretion of this protein in fecal material is frequently used as a measure of pancreatic function in clinical assays.

Application Details

Application Notes: Optimal dilution of the Elastase 3B antibody should be determined by the researcher.
1. FFPE staining requires boiling tissue sections in 10 mM Tris with 1 mM EDTA, pH 9.0, for 10-20 min followed by cooling at RT for 20 min.\. ELISA: 2-4 µg/mL, order BSA free format for coating,IF: 1-2 µg/mL, IHC-P: 1-2 µg/mL (1)

Restrictions: For Research Use only

Handling

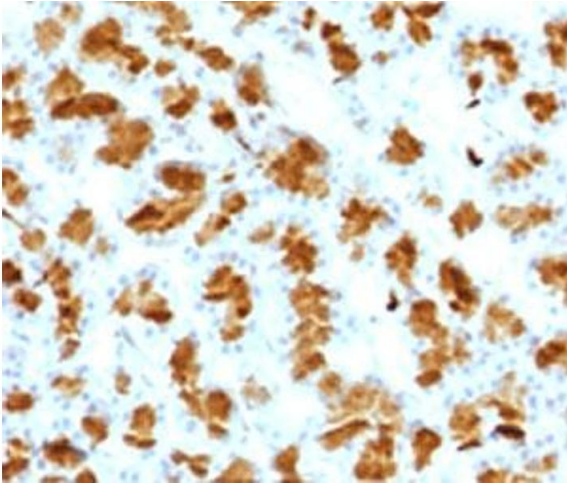
Concentration: 1 mg/mL

Buffer: 1 mg/mL in 1X PBS, BSA free, sodium azide free

Preservative: Azide free

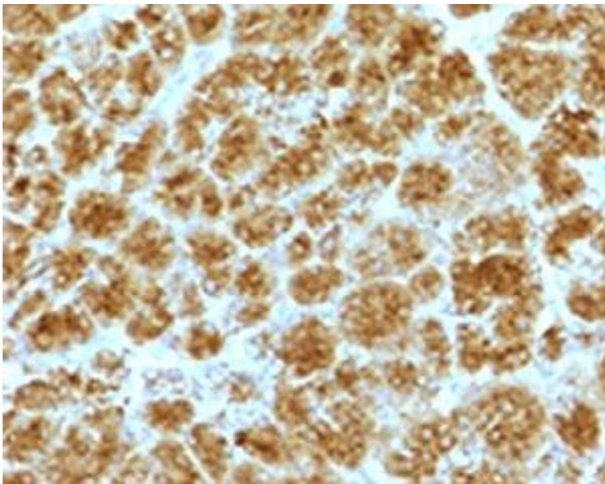
Storage: 4 °C,-20 °C

Storage Comment: Store the Elastase 3B antibody at 2-8°C (with azide) or aliquot and store at -20°C or colder (without azide).



Immunohistochemistry

Image 1. IHC testing of FFPE rat pancreas with Elastase 3B antibody.



Immunohistochemistry

Image 2. IHC testing of FFPE human pancreas with Elastase 3B antibody.