

Datasheet for ABIN3024771
anti-PTH antibody (AA 32-115)

3 Images

[Go to Product page](#)

Overview

Quantity:	100 µg
Target:	PTH
Binding Specificity:	AA 32-115
Reactivity:	Human
Host:	Mouse
Clonality:	Monoclonal
Conjugate:	This PTH antibody is un-conjugated
Application:	Immunofluorescence (IF), Flow Cytometry (FACS), Immunohistochemistry (Paraffin-embedded Sections) (IHC (p))

Product Details

Immunogen:	Amino acids 32-115 of human PTH was used as the immunogen for the Parathyroid Hormone antibody.
Clone:	PTH-1173
Isotype:	IgG2b kappa
Characteristics:	Epitope of this mAb maps in the C-terminus of PTH, a hormone produced by the parathyroid gland that regulates the concentration of calcium and phosphorus in extracellular fluid. This hormone elevates blood Ca ²⁺ levels by dissolving the salts in bone and preventing their renal excretion. It is produced in the parathyroid gland as an 84 amino acid single chain polypeptide. It can also be secreted as N-terminal truncated fragments or C-terminal fragments after intracellular degradation, as in case of hypercalcemia. Defects in this gene are a cause of

Product Details

familial isolated hypoparathyroidism (FIH), also called autosomal dominant hypoparathyroidism or autosomal dominant hypocalcemia. FIH is characterized by hypocalcemia and hyperphosphatemia due to inadequate secretion of parathyroid hormone. Symptoms are seizures, tetany and cramps. FIH exist both as autosomal dominant and recessive forms of hypoparathyroidism.

Purification: Protein G affinity chromatography

Target Details

Target: PTH

Alternative Name: Parathyroid Hormone ([PTH Products](#))

Target Type: Hormone

Background: Epitope of this mAb maps in the C-terminus of PTH, a hormone produced by the parathyroid gland that regulates the concentration of calcium and phosphorus in extracellular fluid. This hormone elevates blood Ca^{2+} levels by dissolving the salts in bone and preventing their renal excretion. It is produced in the parathyroid gland as an 84 amino acid single chain polypeptide. It can also be secreted as N-terminal truncated fragments or C-terminal fragments after intracellular degradation, as in case of hypercalcemia. Defects in this gene are a cause of familial isolated hypoparathyroidism (FIH), also called autosomal dominant hypoparathyroidism or autosomal dominant hypocalcemia. FIH is characterized by hypocalcemia and hyperphosphatemia due to inadequate secretion of parathyroid hormone. Symptoms are seizures, tetany and cramps. FIH exist both as autosomal dominant and recessive forms of hypoparathyroidism.

Pathways: [cAMP Metabolic Process](#), [Regulation of Carbohydrate Metabolic Process](#)

Application Details

Application Notes: Optimal dilution of the Parathyroid Hormone antibody should be determined by the researcher.

1. Staining of formalin-fixed tissues requires boiling tissue sections in 10 mM Citrate buffer, pH 6.0, for 10-20 min followed by cooling at RT for 20 min.
2. The prediluted format is supplied in a dropper bottle and is optimized for use in IHC. After epitope retrieval step (if required), drip mAb solution onto the tissue section and incubate at RT for 30 min.\. Flow Cytometry: 0.5-1 μg /million cells in 0.1ml,Immunofluorescence: 0.5-1 μg /mL,Immunohistochemistry (FFPE): 0.5-1 μg /mL for 30 min at RT (1),Prediluted format: incubate for 30 min at RT (2)

Application Details

Restrictions: For Research Use only

Handling

Concentration: 0.2 mg/mL

Buffer: 0.2 mg/mL in 1X PBS with 0.1 mg/mL BSA (US sourced) and 0.05 % sodium azide

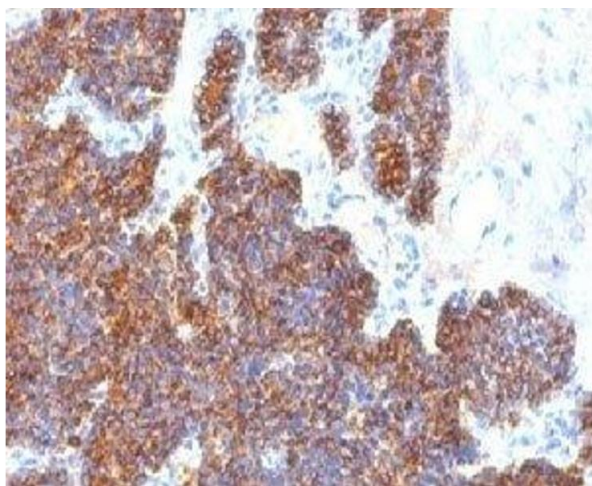
Preservative: Sodium azide

Precaution of Use: This product contains Sodium azide: a POISONOUS AND HAZARDOUS SUBSTANCE which should be handled by trained staff only.

Storage: 4 °C, -20 °C

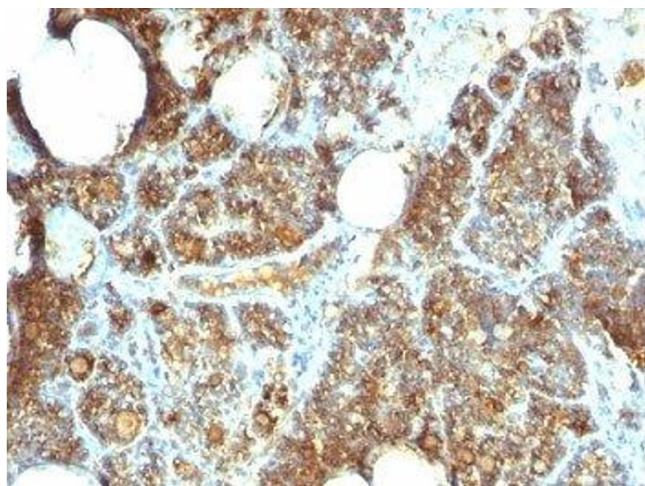
Storage Comment: Store the Parathyroid Hormone antibody at 2-8°C (with azide) or aliquot and store at -20°C or colder (without azide).

Images



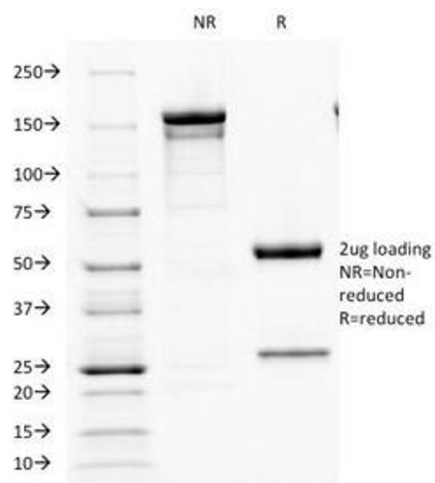
Immunohistochemistry

Image 1. Formalin-fixed, paraffin-embedded human parathyroid stained with Parathyroid Hormone antibody (PTH/1173).



Immunohistochemistry

Image 2. Formalin-fixed, paraffin-embedded human parathyroid stained with Parathyroid Hormone antibody (PTH/1173).



SDS-PAGE

Image 3. SDS-PAGE Analysis of Purified, BSA-Free Parathyroid Hormone Antibody (clone PTH/1173). Confirmation of Integrity and Purity of the Antibody.