



[Go to Product page](#)

Datasheet for ABIN3024797
anti-ESR2 antibody (C-Term)

6 Images

Overview

Quantity:	100 µg
Target:	ESR2
Binding Specificity:	C-Term
Reactivity:	Human, Mouse, Rat, Sheep, Pig, Horse, Monkey
Host:	Mouse
Clonality:	Monoclonal
Conjugate:	This ESR2 antibody is un-conjugated
Application:	Western Blotting (WB), Immunofluorescence (IF), Flow Cytometry (FACS), Immunohistochemistry (Paraffin-embedded Sections) (IHC (p))

Product Details

Immunogen:	The C-terminus fragment of recombinant human Estrogen Receptor beta protein was used as the immunogen for this antibody.
Clone:	ERb455
Isotype:	IgG2a
Purification:	Protein G purified monoclonal antibody

Target Details

Target:	ESR2
Alternative Name:	Estrogen Receptor beta (ESR2 Products)

Target Details

Background: Estrogen receptors (ER) are members of the steroid/thyroid hormone receptor superfamily of ligand-activated transcription factors. Estrogen receptors, including alpha and beta, contain DNA binding and ligand binding domains and are critically involved in regulating the normal function of reproductive tissues. They are located in the nucleus, though some estrogen receptors associate with the cell surface membrane and can be rapidly activated by exposure of cells to estrogen. ER alpha and beta are differentially activated by various ligands. Ligand interaction triggers a cascade of events, including dissociation from heat shock proteins, receptor dimerization, phosphorylation and the association of the hormone activated receptor with specific regulatory elements in target genes. Evidence suggests that ER alpha and beta may be regulated by distinct mechanisms even though they share many functional characteristics.

Gene ID: 2100

Pathways: [Nuclear Receptor Transcription Pathway](#), [EGFR Signaling Pathway](#), [Intracellular Steroid Hormone Receptor Signaling Pathway](#), [Steroid Hormone Mediated Signaling Pathway](#), [Regulation of Intracellular Steroid Hormone Receptor Signaling](#)

Application Details

Application Notes: The concentration stated for each application is a general starting point. Variations in protocols, secondaries and substrates may require the Estrogen Receptor beta antibody to be titrated up or down for optimal performance. 1. Staining of formalin-fixed tissues requires boiling tissue sections in 10 mM citrate buffer, pH 6.0, for 10-20 min followed by cooling at RT for 20 minutes. 2. The prediluted format is supplied in a dropper bottle and is optimized for use in IHC. After epitope retrieval step (if required), drip mAb solution onto the tissue section and incubate at RT for 30 min. \. FACS: 0.5-1 µg/10e6 cells, IF: 1-2 µg/mL, WB: 0.5-1 µg/mL, IHC (FFPE): 0.5-1 µg/mL for 30 minutes at RT (1)

Restrictions: For Research Use only

Handling

Concentration: 1 mg/mL

Buffer: 1 mg/mL in 1X PBS, BSA free, sodium azide free

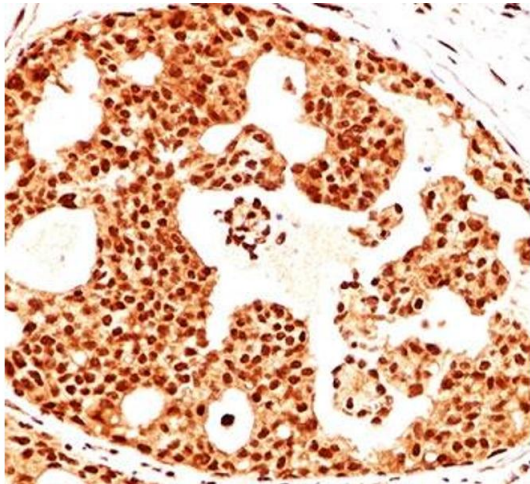
Preservative: Azide free

Storage: 4 °C, -20 °C

Handling

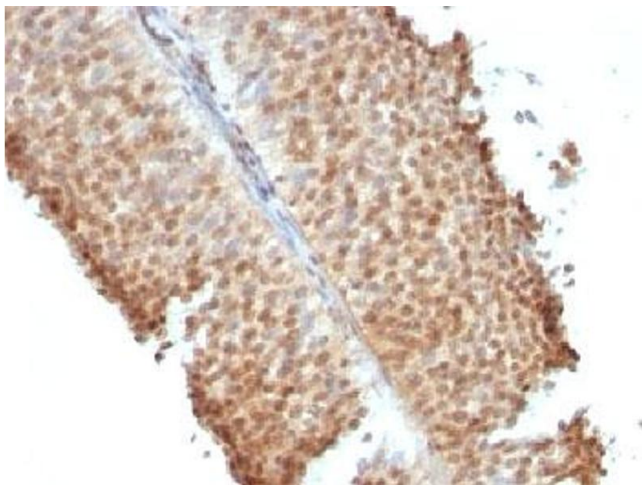
Storage Comment: Store the Estrogen Receptor antibody at 2-8°C (with azide) or aliquot and store at -20°C or colder (without azide).

Images



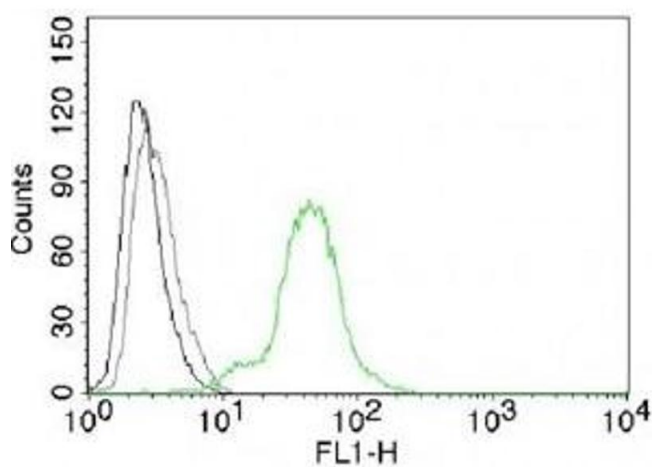
Immunohistochemistry

Image 1. IHC testing of breast cancer stained with Estrogen Receptor beta antibody (ERb455).



Immunohistochemistry

Image 2. IHC testing of bladder carcinoma stained with Estrogen Receptor beta antibody (ERb455).



Flow Cytometry

Image 3. FACS testing of BT474 cells: Black=cells alone

Please check the [product details page](#) for more images. Overall 6 images are available for ABIN3024797.