

Datasheet for ABIN3024826

## anti-Nkx2-2 antibody

### 2 Images



[Go to Product page](#)

### Overview

Quantity:	100 µg
Target:	Nkx2-2
Reactivity:	Human, Mouse, Rat, Chicken
Host:	Mouse
Clonality:	Monoclonal
Conjugate:	This Nkx2-2 antibody is un-conjugated
Application:	Immunofluorescence (IF), Flow Cytometry (FACS), Immunohistochemistry (Paraffin-embedded Sections) (IHC (p))

### Product Details

Immunogen:	Human NKX2.2 recombinant protein was used as the immunogen for this antibody.
Clone:	NX2-294
Isotype:	IgG2b kappa
Purification:	Protein G affinity chromatography

### Target Details

Target:	Nkx2-2
Alternative Name:	NKX2.2 ( <a href="#">Nkx2-2 Products</a> )
Background:	Expression of NKX2.2 has been found in neuroendocrine tumors of the gut, making it a potential marker for the study of gastrointestinal neuroendocrine tumors. More recently, NKX2.2 protein was identified as a target of EWS-FLI-1, the fusion protein specific to Ewing

## Target Details

sarcoma, and was shown to be differentially upregulated in Ewing sarcoma on the basis of array-based gene expression analysis. antibody to NKX2.2 detects a valuable marker for Ewing sarcoma, with a sensitivity of 93 % and a specificity of 89 %, and aids in the differential diagnosis of small round cell tumors.

Gene ID: 4821

Pathways: [Dopaminergic Neurogenesis](#)

## Application Details

Application Notes: The concentration stated for each application is a general starting point. Variations in protocols, secondaries and substrates may require the NKX2.2 antibody to be titrated up or down for optimal performance.

1. Staining of formalin-fixed tissues requires boiling tissue sections in 10 mM citrate buffer, pH 6.0, for 10-20 min followed by cooling at RT for 20 minutes.
2. The prediluted format is supplied in a dropper bottle and is optimized for use in IHC. After epitope retrieval step (if required), drip mAb solution onto the tissue section and incubate at RT for 30 min.\. FACS: 0.5-1 µg/million cells,IF: 1-2 µg/mL,IHC (FFPE): 0.5-1 µg/mL for 30 minutes at RT (1),Prediluted format : incubate for 30 min at RT (2)

Restrictions: For Research Use only

## Handling

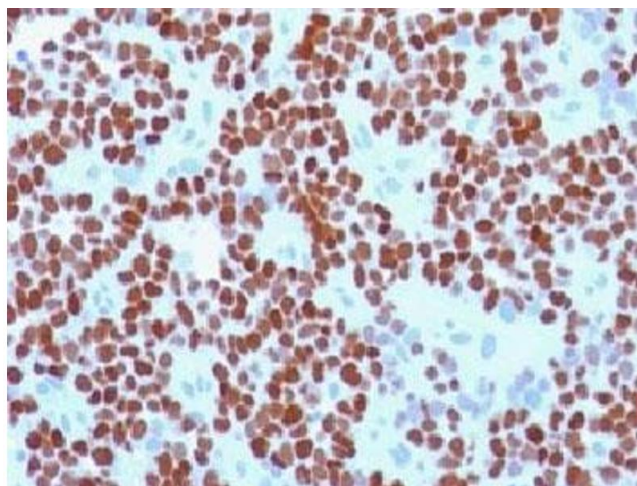
Concentration: 1 mg/mL

Buffer: 1 mg/mL in 1X PBS, BSA free, sodium azide free

Preservative: Azide free

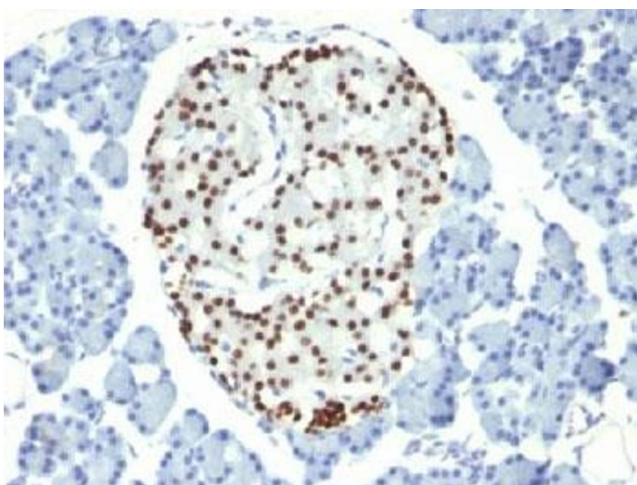
Storage: 4 °C,-20 °C

Storage Comment: Store the NKX2.2 antibody at 2-8°C (with azide) or aliquot and store at -20°C or colder (without azide).



#### Immunohistochemistry

**Image 1.** IHC testing of Ewing's sarcoma stained with NKX2.2 antibody (NX2/294).



#### Immunohistochemistry

**Image 2.** IHC testing of FFPE rat pancreas with NKX2.2 antibody.