



[Go to Product page](#)

Datasheet for ABIN302505
anti-MRGPRX2 antibody (C-Term)

1 Image

Overview

Quantity:	50 µg
Target:	MRGPRX2
Binding Specificity:	C-Term
Reactivity:	Human
Host:	Rabbit
Clonality:	Polyclonal
Conjugate:	This MRGPRX2 antibody is un-conjugated
Application:	Immunohistochemistry (Paraffin-embedded Sections) (IHC (p))

Product Details

Immunogen:	MRGPRX2 antibody was raised against synthetic peptide from C-terminal cytoplasmic domain of human MRGPRX2 / MRGX2.
Specificity:	This antibody detects G Protein-Coupled Receptor MRGX2 (MRGPRX2) at C-terminal cytoplasmic domain.
Purification:	Immunoaffinity chromatography

Target Details

Target:	MRGPRX2
Alternative Name:	MRGPRX2 (MRGPRX2 Products)
Background:	MRGX2 is highly similar to other MRG receptors. Recently it has been shown that MrgX2 is a high potency cortistatin receptor expressed in dorsal root ganglion.Synonyms: MRGX2, Mas-

Target Details

related G-protein coupled receptor member X2

Gene ID: 117194

NCBI Accession: [NP_473371](#)

UniProt: [Q96LB1](#)

Application Details

Application Notes: Immunohistochemistry on paraffin sections (20 µg/mL). Antigen retrieval: Steam slides in 0.01 M sodium citrate buffer, pH 6.0, at 99-100C for 20 min. Remove from heat and let stand at room temperature in buffer for 20 min. Rinse in 1xTBS with Tween (TBST) for 1 min. at room temperature.

Other applications not tested.

Optimal dilutions are dependent on conditions and should be determined by the user.

Restrictions: For Research Use only

Handling

Concentration: 0.9 mg/mL

Buffer: PBS containing 0.09 % sodium azide as preservative

Preservative: Sodium azide

Precaution of Use: This product contains sodium azide: a POISONOUS AND HAZARDOUS SUBSTANCE which should be handled by trained staff only.

Handling Advice: Avoid repeated freezing and thawing.

Storage: 4 °C/-20 °C

Storage Comment: Store the antibody undiluted at 2-8 °C for one month or (in aliquots) at -20 °C to -70 °C for longer.

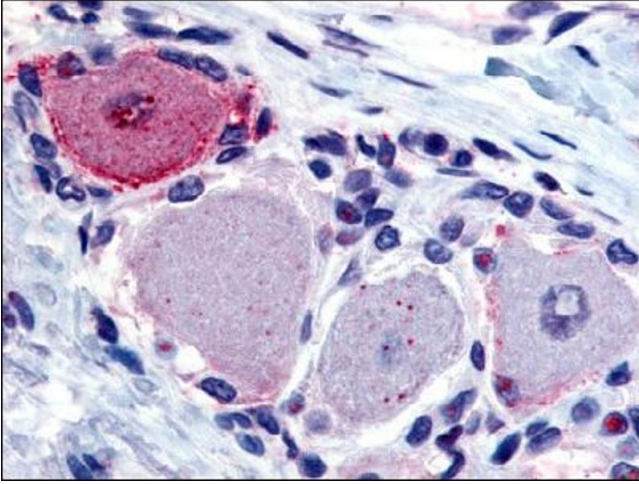


Image 1.