

Datasheet for ABIN3025254

anti-MUC6 antibody**2** Images[Go to Product page](#)

Overview

Quantity:	100 µg
Target:	MUC6
Reactivity:	Human
Host:	Mouse
Clonality:	Monoclonal
Conjugate:	This MUC6 antibody is un-conjugated
Application:	Immunofluorescence (IF), Flow Cytometry (FACS), Western Blotting (WB), Immunohistochemistry (Paraffin-embedded Sections) (IHC (p))

Product Details

Immunogen:	Recombinant human protein was used as the immunogen for the Mucin-6 antibody.
Clone:	MUC6-916
Isotype:	IgG1 kappa
No Cross-Reactivity:	Rat (Rattus)
Purification:	Protein G affinity chromatography

Target Details

Target:	MUC6
Alternative Name:	Mucin-6 (MUC6 Products)
Background:	MUC6 or gastric mucin is a secreted glycoprotein that plays an essential role in epithelial cyto-

Target Details

protection from acid, proteases, pathogenic microorganisms, and mechanical trauma in the gastrointestinal tract. Mucin 6 expression is highest in the stomach and gall bladder, with lower expression in the terminal ileum and right colon. In gastric cancer, Mucin 6 has an altered expression. In normal stomach, Mucin 6 is associated with Lewis type 2, Mucin 6 is also expressed in gastric metaplasia, duodenum and pancreas. Mucin 6 is a secretory mucin, located in the deeper mucosal folds of human gall bladder, and its expression is altered with increasing degrees of inflammation.

Application Details

Application Notes: Optimal dilution of the Mucin-6 antibody should be determined by the researcher.

1. Staining of formalin-fixed tissues requires boiling tissue sections in 10 mM Citrate buffer, pH 6.0, for 10-20 min followed by cooling at RT for 20 min
2. The prediluted format is supplied in a dropper bottle and is optimized for use in IHC. After epitope retrieval step (if required), drip mAb solution onto the tissue section and incubate at RT for 30 min.\. Flow Cytometry: 0.5-1 µg/million cells in 0.1ml,Immunofluorescence: 1-2 µg/mL,Western blot: 0.5-1 µg/mL,Immunohistochemistry (FFPE): 2-4 µg/mL for 30 min at RT (1),Prediluted format : incubate for 30 min at RT (2)

Restrictions: For Research Use only

Handling

Concentration: 0.2 mg/mL

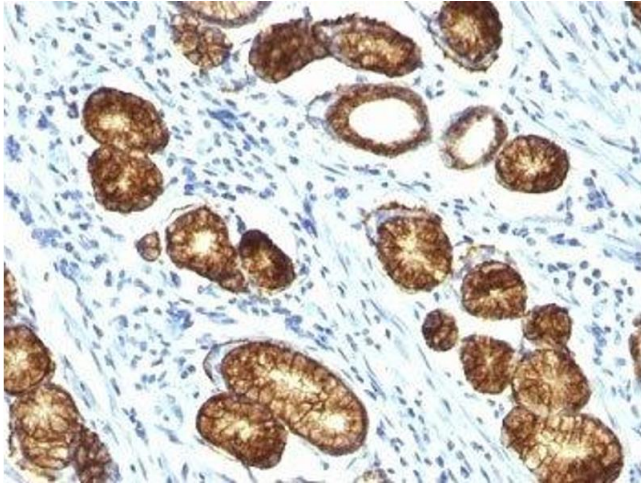
Buffer: 0.2 mg/mL in 1X PBS with 0.1 mg/mL BSA (US sourced) and 0.05 % sodium azide

Preservative: Sodium azide

Precaution of Use: This product contains Sodium azide: a POISONOUS AND HAZARDOUS SUBSTANCE which should be handled by trained staff only.

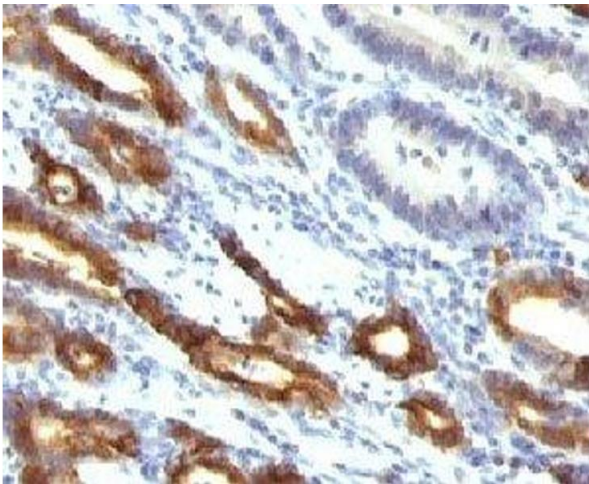
Storage: 4 °C,-20 °C

Storage Comment: Store the Mucin-6 antibody at 2-8°C (with azide) or aliquot and store at -20°C or colder (without azide).



Immunohistochemistry

Image 1. Formalin-fixed, paraffin-embedded human gastric carcinoma stained with Mucin-6 antibody (MUC6/916).



Immunohistochemistry

Image 2. Formalin-fixed, paraffin-embedded human gastric carcinoma stained with Mucin-6 antibody (MUC6/916).