



[Go to Product page](#)

Datasheet for ABIN3025300  
**anti-Calponin antibody**

3 Images

### Overview

Quantity:	100 µg
Target:	Calponin
Reactivity:	Human, Rat
Host:	Mouse
Clonality:	Monoclonal
Conjugate:	This Calponin antibody is un-conjugated
Application:	Immunohistochemistry (Paraffin-embedded Sections) (IHC (p)), Immunofluorescence (IF), Flow Cytometry (FACS)

### Product Details

Immunogen:	Recombinant full-length human protein (CNN1/832) and crude human uterus extract (CALP) were used as the immunogen for the Calponin antibody cocktail.
Clone:	CNN1-832-CALP
Isotype:	IgG
Purification:	Protein G affinity chromatography

### Target Details

Target:	Calponin
Abstract:	<a href="#">Calponin Products</a>
Background:	Multiple isoelectric variants of calponin have been identified, however only two molecular weight isoforms exist, a 34 kDa form and a 29 kDa form. Expression of the 29 kDa form, I-

## Target Details

---

calponin, is primarily restricted to muscle of the urogenital tract, whereas the higher molecular weight variant has been demonstrated in vascular and visceral smooth muscle. In Western blotting, this mAb reacts with only the 34 kDa form of calponin in extracts of human aortic medial smooth muscle and is unreactive with fibroblast extracts of cultivated human foreskin. Calponin is a calmodulin, F-actin and tropomyosin binding protein, which is thought to be involved in the regulation of smooth muscle contraction. Calponin expression is restricted to smooth muscle cells and has been shown to be a marker of the differentiated (contractile) phenotype of developing smooth muscle.

## Application Details

---

Application Notes: Optimal dilution of the Calponin antibody cocktail should be determined by the researcher.

1. Staining of formalin-fixed tissues requires boiling tissue sections in 10 mM Tris with 1 mM EDTA, pH 9.0, for 10-20 min followed by cooling at RT for 20 min
2. The prediluted format is supplied in a dropper bottle and is optimized for use in IHC. After epitope retrieval step (if required), drip mAb solution onto the tissue section and incubate at RT for 30 min.\. Flow Cytometry: 0.5-1 µg/million cells in 0.1ml,Immunofluorescence: 1-2 µg/mL,Immunohistochemistry (FFPE): 0.5-1 µg/mL for 30 min at RT (1),Prediluted format : incubate for 30 min at RT (2)

Restrictions: For Research Use only

## Handling

---

Concentration: 0.2 mg/mL

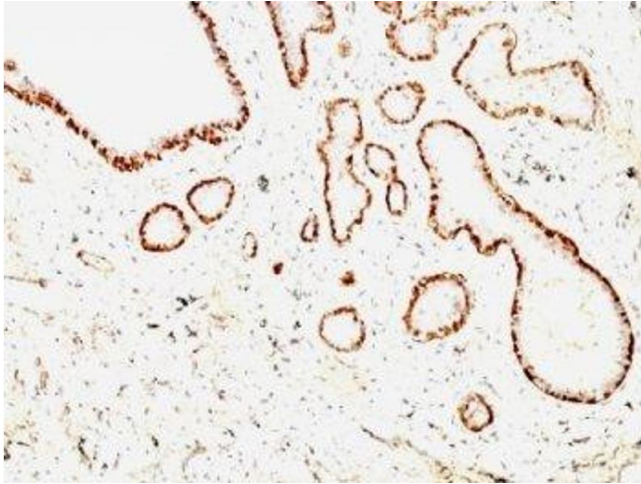
Buffer: 0.2 mg/mL in 1X PBS with 0.1 mg/mL BSA (US sourced) and 0.05 % sodium azide

Preservative: Sodium azide

Precaution of Use: This product contains Sodium azide: a POISONOUS AND HAZARDOUS SUBSTANCE which should be handled by trained staff only.

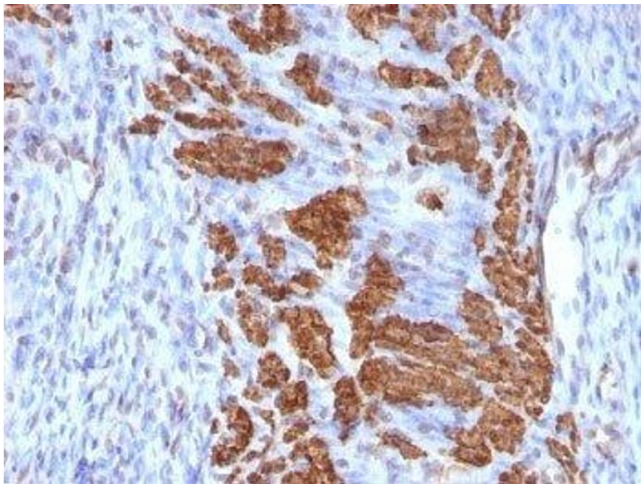
Storage: 4 °C,-20 °C

Storage Comment: Store the Calponin antibody cocktail at 2-8°C (with azide) or aliquot and store at -20°C or colder (without azide).



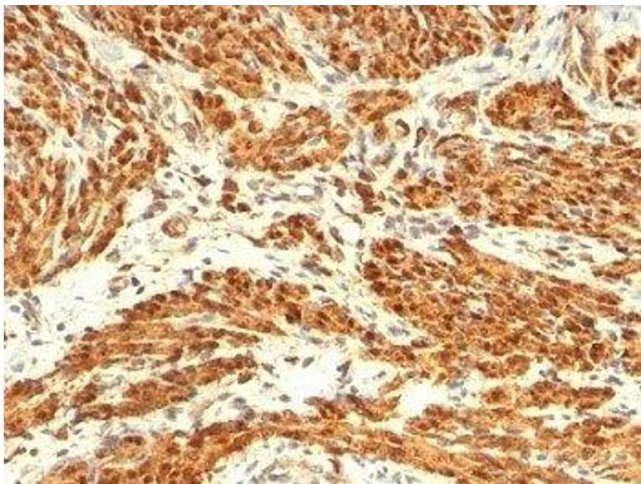
#### Immunohistochemistry

**Image 1.** Formalin-fixed, paraffin-embedded human breast carcinoma stained with Calponin antibody (CNN1/832 + CALP).



#### Immunohistochemistry

**Image 2.** Formalin-fixed, paraffin-embedded rat uterus stained with Calponin antibody (CNN1/832 + CALP).



#### Immunohistochemistry

**Image 3.** Formalin-fixed, paraffin-embedded human uterus stained with Calponin antibody (CNN1/832 + CALP).