

Datasheet for ABIN3025305  
**anti-MVP antibody**



[Go to Product page](#)

2 Images

## Overview

Quantity:	100 µg
Target:	MVP
Reactivity:	Human
Host:	Mouse
Clonality:	Monoclonal
Conjugate:	This MVP antibody is un-conjugated
Application:	Western Blotting (WB), Flow Cytometry (FACS), Immunofluorescence (IF), Immunohistochemistry (Paraffin-embedded Sections) (IHC (p))

## Product Details

Immunogen:	Proteins precipitated from human breast cancer MCF-7 cells were used as the immunogen for the Major Vault Protein antibody.
Clone:	1032
Isotype:	IgG1 kappa
Purification:	Protein G affinity chromatography

## Target Details

Target:	MVP
Alternative Name:	Major Vault Protein ( <a href="#">MVP Products</a> )
Background:	MVP is required for normal vault structure. Vaults are multi-subunit structures that may act as scaffolds for proteins involved in signal transduction. Vaults may also play a role in nucleo-

Target Details

cytoplasmic transport. Down-regulates INFG-mediated STAT1 signaling and subsequent activation of JAK. Down-regulates SRC activity and signaling through MAP kinases.

Application Details

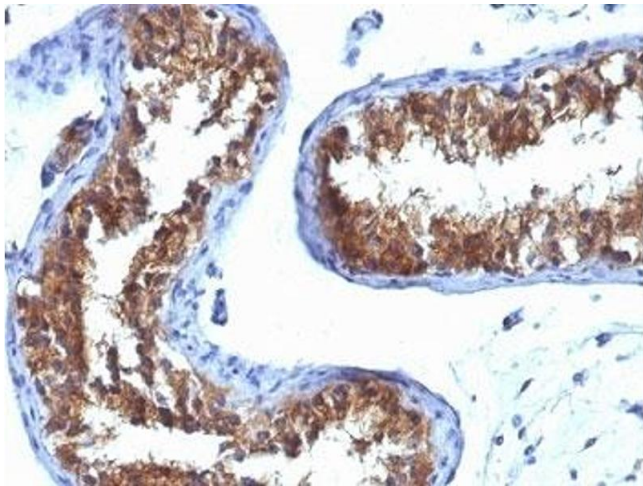
Application Notes:	Optimal dilution of the Major Vault Protein antibody should be determined by the researcher. 1. Staining of formalin-fixed tissues requires boiling tissue sections in 10 mM Tris with 1 mM EDTA, pH 9.0, for 10-20 min followed by cooling at RT for 20 min. 2. The prediluted format is supplied in a dropper bottle and is optimized for use in IHC. After epitope retrieval step (if required), drip mAb solution onto the tissue section and incubate at RT for 30 min.\. Western blot: 1-2 µg/mL, Flow Cytometry: 0.5-1 µg/million cells in 0.1ml,Immunofluorescence: 0.5-1 µg/mL,Immunohistochemistry (FFPE): 0.5-1 µg/mL for 30 min at RT (1),Prediluted format: incubate for 30 min at RT (2)
--------------------	--

Restrictions:	For Research Use only
---------------	-----------------------

Handling

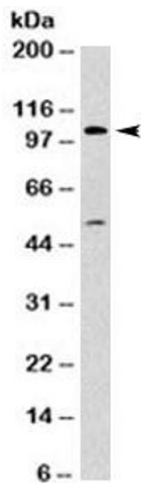
Concentration:	1 mg/mL
Buffer:	1 mg/mL in 1X PBS, BSA free, sodium azide free
Preservative:	Azide free
Storage:	4 °C,-20 °C
Storage Comment:	Store the Major Vault Protein antibody at 2-8°C (with azide) or aliquot and store at -20°C or colder (without azide).

Images



Immunohistochemistry (Formalin-fixed Paraffin-embedded Sections)

**Image 1.** Formalin-fixed, paraffin-embedded human testicular carcinoma stained with Major Vault Protein antibody (1032).



### Western Blotting

**Image 2.** Western blot testing of T98G cell lysate with Major Vault Protein antibody (clone 1032). Observed molecular weight: 104~110kDa.