

## Datasheet for ABIN3025390 **anti-CD31 antibody**

### 5 Images



[Go to Product page](#)

### Overview

Quantity:	100 µg
Target:	CD31 (PECAM1)
Reactivity:	Human, Rabbit, Cynomolgus
Host:	Mouse
Clonality:	Monoclonal
Conjugate:	This CD31 antibody is un-conjugated
Application:	Flow Cytometry (FACS), Western Blotting (WB), Immunofluorescence (IF), Immunohistochemistry (Paraffin-embedded Sections) (IHC (p))

### Product Details

Immunogen:	Human recombinant PECAM-1 / CD31 protein was used as the immunogen for this antibody.
Clone:	C31-7
Isotype:	IgG1 kappa
Purification:	Protein G affinity chromatography

### Target Details

Target:	CD31 (PECAM1)
Alternative Name:	PECAM-1 ( <a href="#">PECAM1 Products</a> )
Background:	PECAM-1, or platelet endothelial cell adhesion molecule-1, also called CD31, is made up of six extracellular immunoglobulin-like domains, a single transmembrane domain, and a cytoplasmic domain containing serine and tyrosine residues that when phosphorylated, activate the

## Target Details

---

molecules signaling function. It is expressed on platelets, monocytes, neutrophils, bone marrow macrophage and dendritic cells precursors, and at the intracellular junction of endothelial cells. PECAM-1, on the endothelial lining of blood vessels, helps maintain the vascular barrier. In response to inflammatory mediators, the endothelial pull away from each other allowing fluid, inflammatory cells and proteins into the extravascular space. The inflammatory response fades as adhesion of neighboring cells increase. PECAM-1 also plays an important role in angiogenesis, promoting endothelial cell motility, junctional development and capillary morphogenesis.

Pathways: [Regulation of Actin Filament Polymerization](#)

## Application Details

---

Application Notes: The concentration stated for each application is a general starting point. Variations in protocols, secondaries and substrates may require the PECAM-1 antibody to be titered up or down for optimal performance.

1. Staining of formalin-fixed tissues requires boiling tissue sections in 1 mM EDTA, pH 7.5-8.5, for 10-20 min followed by cooling at RT for 20 minutes.

2. The prediluted format is supplied in a dropper bottle and is optimized for use in IHC. After epitope retrieval step (if required), drip mAb solution onto the tissue section and incubate at RT for 30 min. \. FACS: 0.5-1 µg/10e6 cells,IF: 1-2 µg/mL,WB: 0.5-1 µg/mL,IHC (FFPE): 0.5-1 µg/mL for 30 minutes at RT (1),Prediluted format : incubate for 30 min at RT (2)

Restrictions: For Research Use only

## Handling

---

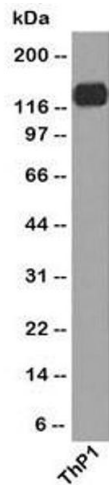
Concentration: 1 mg/mL

Buffer: 1 mg/mL in 1X PBS, BSA free, sodium azide free

Preservative: Azide free

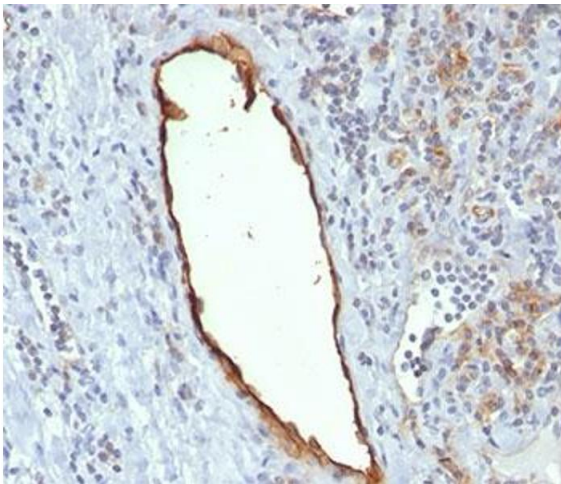
Storage: 4 °C

Storage Comment: Store the PECAM-1 antibody at 2-8°C.



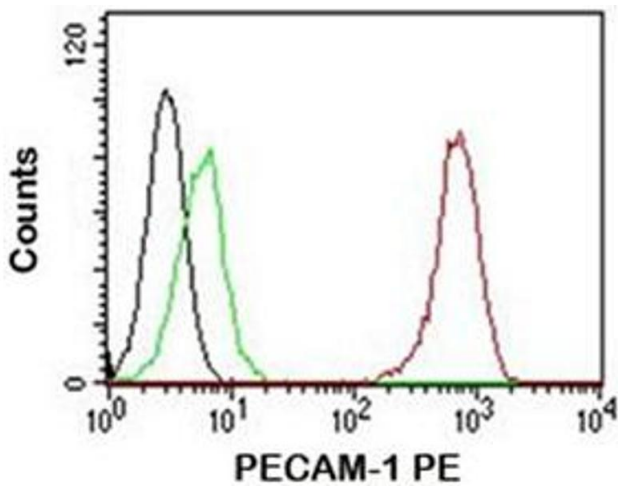
### Western Blotting

**Image 1.** Western blot testing of human samples using PECAM-1 antibody (C31.7).



### Immunohistochemistry

**Image 2.** IHC staining of tonsil tissue with PECAM-1 antibody (C31.7).



### Flow Cytometry

**Image 3.** FACS testing of Jurkat cells: Black=cells alone

Please check the [product details page](#) for more images. Overall 5 images are available for ABIN3025390.