

Datasheet for ABIN3025660
anti-ST6GAL1 antibody



[Go to Product page](#)

2 Images

Overview

Quantity:	100 µg
Target:	ST6GAL1
Reactivity:	Human
Host:	Mouse
Clonality:	Monoclonal
Conjugate:	This ST6GAL1 antibody is un-conjugated
Application:	Western Blotting (WB), Flow Cytometry (FACS), Immunofluorescence (IF), Immunohistochemistry (Paraffin-embedded Sections) (IHC (p))

Product Details

Immunogen:	Nuclei from pokeweed mitogen-stimulated peripheral blood lymphocytes were used as the immunogen for the CDw75 antibody.
Clone:	LN1
Isotype:	IgM
Purification:	PEG precipitation

Target Details

Target:	ST6GAL1
Alternative Name:	CDw75 (ST6GAL1 Products)
Background:	Recognizes a neuraminidase-sensitive sialoprotein (CDw75), present on cell membrane and cytoplasm of germinal center B-cells and derived lymphomas. This mAb reacts with RBC

Target Details

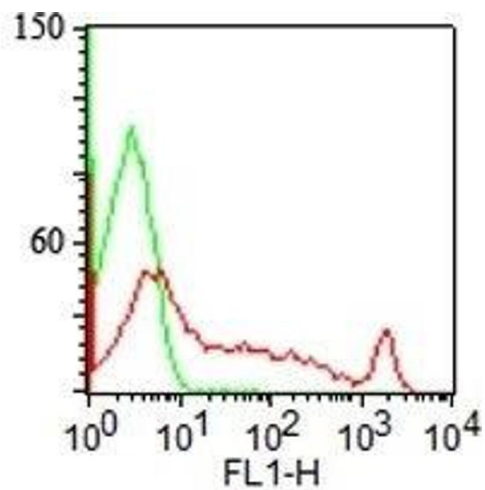
precursors of bone marrow, ductal and ciliated epithelial cells of kidney, breast, prostate, pancreas, lung, and with glioblastomas, astrocytomas, and Reed Sternberg cells in lymphocyte predominant Hodgkin s disease. It is shown to be a helpful antibody for ascribing a B-cell phenotype in known lymphoid tissues.

Application Details

Application Notes:	Optimal dilution of the CDw75 antibody should be determined by the researcher. 1. Staining of formalin-fixed tissues requires boiling tissue sections in 10 mM Citrate buffer, pH 6.0, for 10-20 min followed by cooling at RT for 20 min.\. Western blot: 1-2 µg/mL, Flow Cytometry: 0.5-1 µg/million cells in 0.1ml,Immunofluorescence: 0.5-1 µg/mL,Immunohistochemistry (FFPE): 0.5-1 µg/mL for 30 min at RT (1)
Restrictions:	For Research Use only

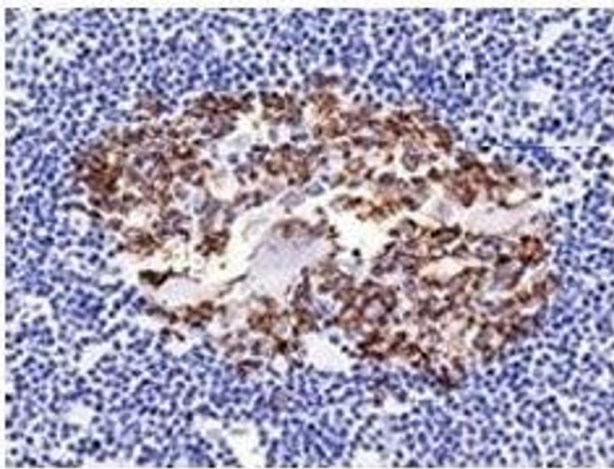
Handling

Concentration:	0.2 mg/mL
Buffer:	0.2 mg/mL in 1X PBS with 0.1 mg/mL BSA (US sourced) and 0.05 % sodium azide
Preservative:	Sodium azide
Precaution of Use:	This product contains Sodium azide: a POISONOUS AND HAZARDOUS SUBSTANCE which should be handled by trained staff only.
Storage:	4 °C,-20 °C
Storage Comment:	Store the CDw75 antibody at 2-8°C (with azide) or aliquot and store at -20°C or colder (without azide).



Immunofluorescence

Image 1. Surface staining of human lymphocytes with CDw75 antibody (LN1) (red) and isotype control (green). PPI negative population analyzed.



Immunohistochemistry

Image 2. Formalin-fixed, paraffin-embedded normal human spleen stained with CDw75 antibody (LN1).