

Datasheet for ABIN3025844
anti-Cytokeratin 19 antibody

6 Images

[Go to Product page](#)

Overview

Quantity:	100 µg
Target:	Cytokeratin 19 (KRT19)
Reactivity:	Human, Mouse, Rat
Host:	Mouse
Clonality:	Monoclonal
Conjugate:	This Cytokeratin 19 antibody is un-conjugated
Application:	Flow Cytometry (FACS), Immunofluorescence (IF), Immunohistochemistry (Paraffin-embedded Sections) (IHC (p))

Product Details

Immunogen:	Recombinant human KRT19 protein was used as the immunogen for the CK19 antibody.
Clone:	KRT19-800
Isotype:	IgG1 kappa
Purification:	Protein G affinity chromatography

Target Details

Target:	Cytokeratin 19 (KRT19)
Alternative Name:	CK19 (KRT19 Products)
Background:	Recognizes a protein of 40 kDa, identified as cytokeratin-19 (CK19), which is expressed in sweat gland, mammary gland ductal and secretory cells, bile ducts, gastrointestinal tract, bladder urothelium, oral epithelia, esophagus, and ectocervical epithelium. Anti-CK19 reacts

Target Details

with a wide variety of epithelial malignancies including adenocarcinomas of the colon, stomach, pancreas, biliary tract, liver, and breast. Perhaps the most useful application is the identification of thyroid carcinoma of the papillary type, although 50 % -60 % of follicular carcinomas are also labeled. Anti-CK19 is a useful marker for detection of tumor cells in lymph nodes, peripheral blood, bone marrow and breast cancer.

Application Details

Application Notes: Optimal dilution of the CK19 antibody should be determined by the researcher.

1. Staining of formalin-fixed tissues requires boiling tissue sections in 10 mM Citrate buffer, pH 6.0, for 10-20 min followed by cooling at RT for 20 min
2. The prediluted format is supplied in a dropper bottle and is optimized for use in IHC. After epitope retrieval step (if required), drip mAb solution onto the tissue section and incubate at RT for 30 min.\. Flow Cytometry: 0.5-1 µg/million cells in 0.1ml,Immunofluorescence: 1-2 µg/mL,Immunohistochemistry (FFPE): 0.5-1 µg/mL for 30 min at RT (1),Prediluted format : incubate for 30 min at RT (2)

Restrictions: For Research Use only

Handling

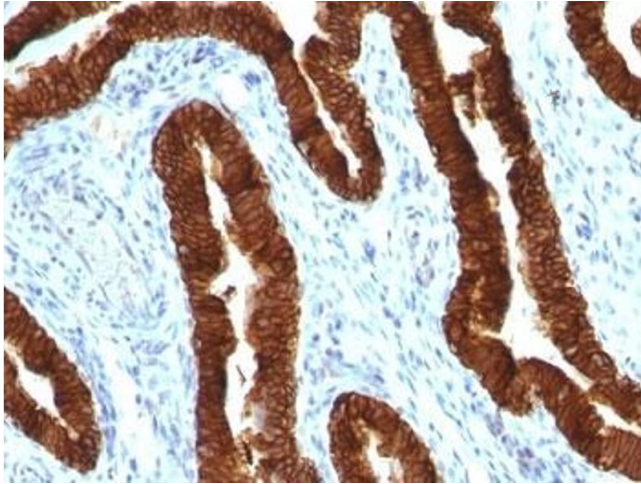
Concentration: 1 mg/mL

Buffer: 1 mg/mL in 1X PBS, BSA free, sodium azide free

Preservative: Azide free

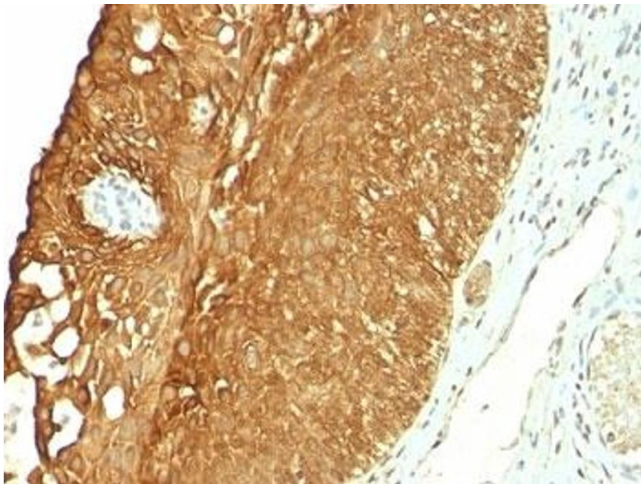
Storage: 4 °C,-20 °C

Storage Comment: Store the CK19 antibody at 2-8°C (with azide) or aliquot and store at -20°C or colder (without azide).



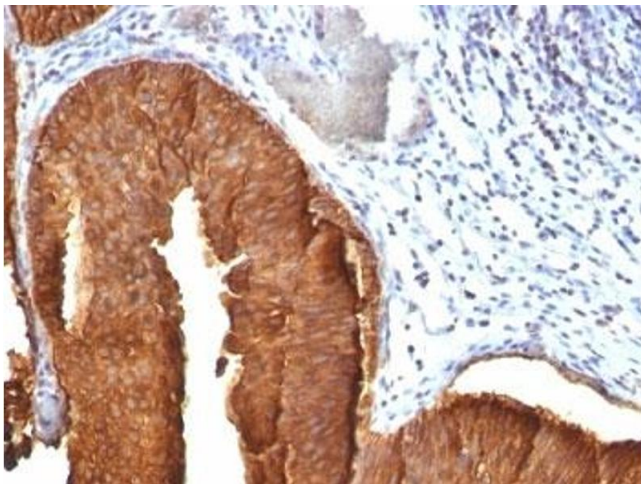
Immunohistochemistry (Formalin-fixed Paraffin-embedded Sections)

Image 1. Formalin-fixed, paraffin-embedded human ovarian carcinoma stained with CK19 antibody (KRT19/800)



Immunohistochemistry (Formalin-fixed Paraffin-embedded Sections)

Image 2. Formalin-fixed, paraffin-embedded human cervical carcinoma stained with CK19 antibody (KRT19/800)



Immunohistochemistry (Formalin-fixed Paraffin-embedded Sections)

Image 3. Formalin-fixed, paraffin-embedded human bladder carcinoma stained with CK19 antibody (KRT19/800)

Please check the [product details page](#) for more images. Overall 6 images are available for ABIN3025844.