

Datasheet for ABIN3025850
anti-Cytokeratin 19 antibody



[Go to Product page](#)

4 Images

Overview

Quantity:	100 µg
Target:	Cytokeratin 19 (KRT19)
Reactivity:	Human, Mouse
Host:	Mouse
Clonality:	Monoclonal
Conjugate:	This Cytokeratin 19 antibody is un-conjugated
Application:	Flow Cytometry (FACS), Immunofluorescence (IF), Immunohistochemistry (Paraffin-embedded Sections) (IHC (p))

Product Details

Immunogen:	Recombinant full-length human KRT19 protein was used as the immunogen for the Cytokeratin 19 antibody cocktail.
Clone:	KRT19-799-KRT19-800
Isotype:	IgG1, IgG2a kappa
Purification:	Protein G affinity chromatography

Target Details

Target:	Cytokeratin 19 (KRT19)
Alternative Name:	Cytokeratin 19 (KRT19 Products)
Background:	Recognizes a protein of 40 kDa, identified as cytokeratin-19 (CK19), which is expressed in sweat gland, mammary gland ductal and secretory cells, bile ducts, gastrointestinal tract,

Target Details

bladder urothelium, oral epithelia, esophagus, and ectocervical epithelium. Anti-CK19 reacts with a wide variety of epithelial malignancies including adenocarcinomas of the colon, stomach, pancreas, biliary tract, liver, and breast. Perhaps the most useful application is the identification of thyroid carcinoma of the papillary type, although 50 % -60 % of follicular carcinomas are also labeled. Anti-CK19 is a useful marker for detection of tumor cells in lymph nodes, peripheral blood, bone marrow and breast cancer.

Application Details

Application Notes: Optimal dilution of the Cytokeratin 19 antibody cocktail should be determined by the researcher.

1. Staining of formalin-fixed tissues requires boiling tissue sections in 10 mM Citrate buffer, pH 6.0, for 10-20 min followed by cooling at RT for 20 min
2. The prediluted format is supplied in a dropper bottle and is optimized for use in IHC. After epitope retrieval step (if required), drip mAb solution onto the tissue section and incubate at RT for 30 min.\. Flow Cytometry: 0.5-1 µg/million cells in 0.1ml,Immunofluorescence: 1-2 µg/mL,Immunohistochemistry (FFPE): 0.5-1 µg/mL for 30 min at RT (1),Prediluted format : incubate for 30 min at RT (2)

Restrictions: For Research Use only

Handling

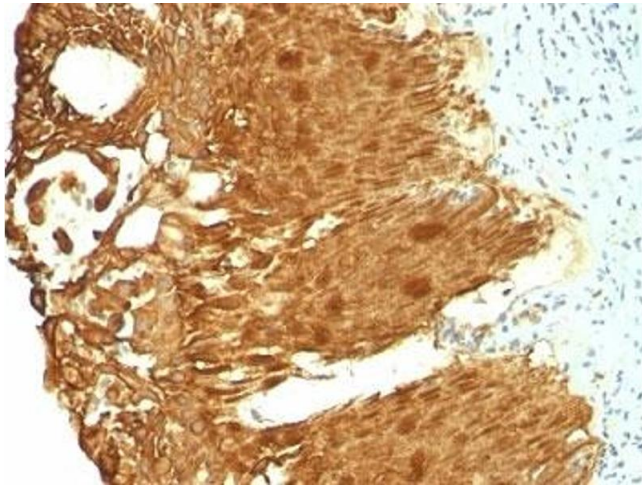
Concentration: 1 mg/mL

Buffer: 1 mg/mL in 1X PBS, BSA free, sodium azide free

Preservative: Azide free

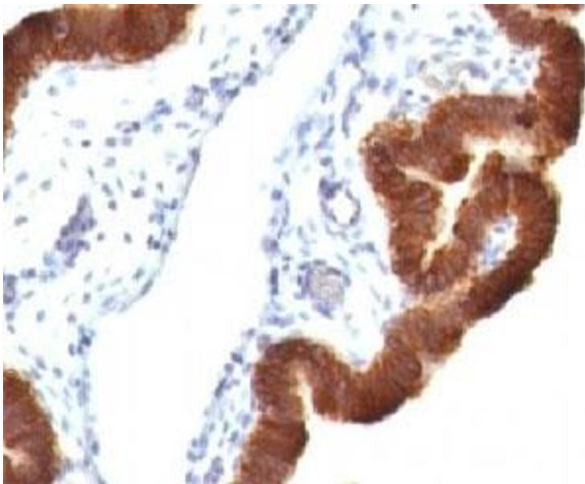
Storage: 4 °C,-20 °C

Storage Comment: Store the Cytokeratin 19 antibody cocktail at 2-8°C (with azide) or aliquot and store at -20°C or colder (without azide).



Immunohistochemistry (Formalin-fixed Paraffin-embedded Sections)

Image 1. Formalin-fixed, paraffin-embedded human cervical carcinoma stained with Cytokeratin 19 antibody (KRT19/799 + KRT19/800)



Immunohistochemistry (Formalin-fixed Paraffin-embedded Sections)

Image 2. Formalin-fixed, paraffin-embedded human ovarian carcinoma stained with Cytokeratin 19 antibody (KRT19/799 + KRT19/800)



Immunohistochemistry (Formalin-fixed Paraffin-embedded Sections)

Image 3. Formalin-fixed, paraffin-embedded human endometrial carcinoma stained with Cytokeratin 19 antibody (KRT19/799 + KRT19/800)

Please check the [product details page](#) for more images. Overall 4 images are available for ABIN3025850.