

Datasheet for ABIN3025853

anti-TTF1 antibody**2** Images[Go to Product page](#)

Overview

Quantity:	100 µg
Target:	TTF1
Reactivity:	Human, Rat, Mouse
Host:	Mouse
Clonality:	Monoclonal
Conjugate:	This TTF1 antibody is un-conjugated
Application:	Flow Cytometry (FACS), Immunohistochemistry (Paraffin-embedded Sections) (IHC (p)), Immunofluorescence (IF)

Product Details

Immunogen:	Recombinant protein was used as the immunogen for the TTF1 antibody cocktail.
Clone:	8G7G3-1-NX2-1-690
Isotype:	IgG
Purification:	Protein G affinity chromatography

Target Details

Target:	TTF1
Alternative Name:	TTF1 (TTF1 Products)
Background:	Recognizes a protein of 40 kDa, identified as Thyroid transcription factor-1 (TTF-1). TTF-1 is a member of the NKx2 family of homeodomain transcription factors. It is expressed in epithelial cells of the thyroid gland and the lung. Nuclei from liver, stomach, pancreas, small intestine,

Target Details

colon, kidney, breast, skin, testes, pituitary, prostate, and adrenal glands are unreactive. Anti-TTF-1 is useful in differentiating primary adenocarcinoma of the lung from metastatic carcinomas originating in the breast, mediastinal germ cell tumors, and malignant mesothelioma. It can also be used to differentiate small cell lung carcinoma from lymphoid infiltrates. Loss of TTF-1 expression in non-small cell lung carcinoma has been associated with aggressive behavior of such neoplasms. TTF-1 reactivity is also seen in thyroid malignancies.

Pathways:

[Thyroid Hormone Synthesis](#), [Regulation of Systemic Arterial Blood Pressure by Hormones](#), [Feeding Behaviour](#)

Application Details

Application Notes:

Optimal dilution of the TTF1 antibody cocktail should be determined by the researcher.

1. Staining of formalin/paraffin tissues requires boiling tissue sections in 10 mM Citrate buffer, pH 6.0, for 10-20 min followed by cooling at RT for 20 min.
2. The prediluted format is supplied in a dropper bottle and is optimized for use in IHC. After epitope retrieval step (if required), drip mAb solution onto the tissue section and incubate at RT for 30 min.\. Flow Cytometry: 0.5-1 µg/million cells in 0.1ml,Immunofluorescence: 0.5-1 µg/mL,Immunohistochemistry (FFPE): 0.5-1 µg/mL for 30 min at RT (1),Prediluted format: incubate for 30 min at RT (2)

Restrictions:

For Research Use only

Handling

Concentration:

0.2 mg/mL

Buffer:

0.2 mg/mL in 1X PBS with 0.1 mg/mL BSA (US sourced) and 0.05 % sodium azide

Preservative:

Sodium azide

Precaution of Use:

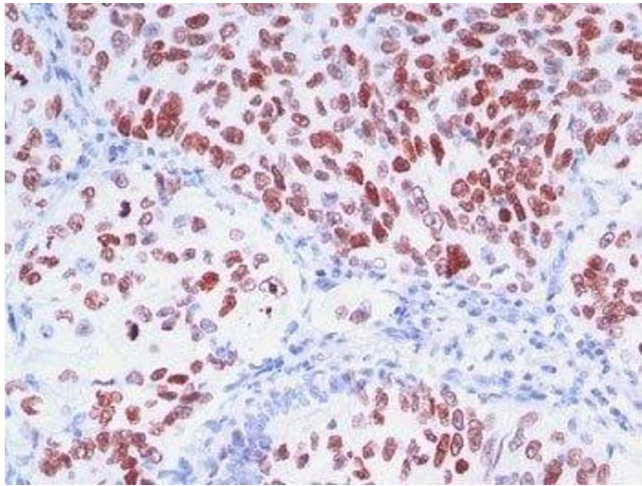
This product contains Sodium azide: a POISONOUS AND HAZARDOUS SUBSTANCE which should be handled by trained staff only.

Storage:

4 °C,-20 °C

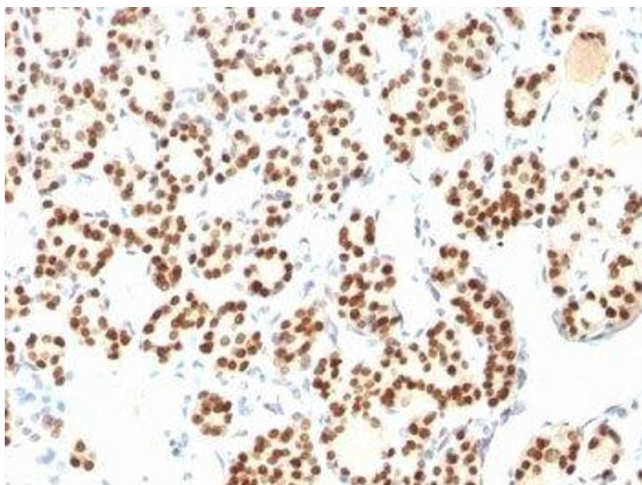
Storage Comment:

Store the TTF1 antibody cocktail at 2-8°C (with azide) or aliquot and store at -20°C or colder (without azide).



Immunohistochemistry

Image 1. Formalin-fixed, paraffin-embedded human lung carcinoma stained with TTF1 antibody (8G7G3/1 + NX2.1/690)



Immunohistochemistry

Image 2. Formalin-fixed, paraffin-embedded human thyroid stained with TTF1 antibody (8G7G3/1 + NX2.1/690)