

Datasheet for ABIN3025860

**anti-MFGE8 antibody**

## 4 Images

[Go to Product page](#)

## Overview

Quantity:	100 µg
Target:	MFGE8
Reactivity:	Human
Host:	Mouse
Clonality:	Monoclonal
Application:	Western Blotting (WB), Flow Cytometry (FACS), Immunofluorescence (IF), Immunohistochemistry (Paraffin-embedded Sections) (IHC (p))

## Product Details

Immunogen:	A human milk fat globule membrane preparation was used as the immunogen for the MFG-E8 antibody.
Clone:	SPM291
Isotype:	IgG1 kappa
Purification:	Protein G affinity chromatography

## Target Details

Target:	MFGE8
Alternative Name:	MFG-E8 ( <a href="#">MFGE8 Products</a> )
Background:	Recognizes a protein of 40-45 kDa, identified as human milk fat globule membrane protein (HMFG), Lactadherin or MFG-E8. HMFG is present on normal human breast epithelial cells and cell lines derived from breast carcinomas, as well as to the outer surface of the human milk fat

## Target Details

globule. HMFG is considered as a differentiation marker. It is useful as specific breast epithelial marker and can also provide a tool to study the role of the cell surface in normal and neoplastic mammary development.

Pathways: [SARS-CoV-2 Protein Interactome](#)

## Application Details

Application Notes: Optimal dilution of the MFG-E8 antibody should be determined by the researcher.

1. Staining of formalin-fixed tissues requires boiling tissue sections in 10 mM Citrate buffer, pH 6.0, for 10-20 min followed by cooling at RT for 20 min
2. The prediluted format is supplied in a dropper bottle and is optimized for use in IHC. After epitope retrieval step (if required), drip mAb solution onto the tissue section and incubate at RT for 30 min.\. Western blot: 1-2 µg/mL, Flow Cytometry: 0.5-1 µg/million cells in 0.1ml,Immunofluorescence: 1-2 µg/mL,Immunohistochemistry (FFPE): 0.5-1 µg/mL for 30 min at RT (1),Prediluted format : incubate for 30 min at RT (2)

Restrictions: For Research Use only

## Handling

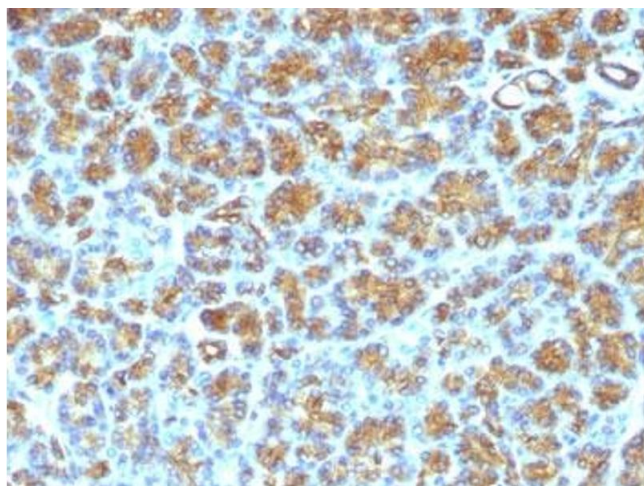
Concentration: 1 mg/mL

Buffer: 1 mg/mL in 1X PBS, BSA free, sodium azide free

Preservative: Azide free

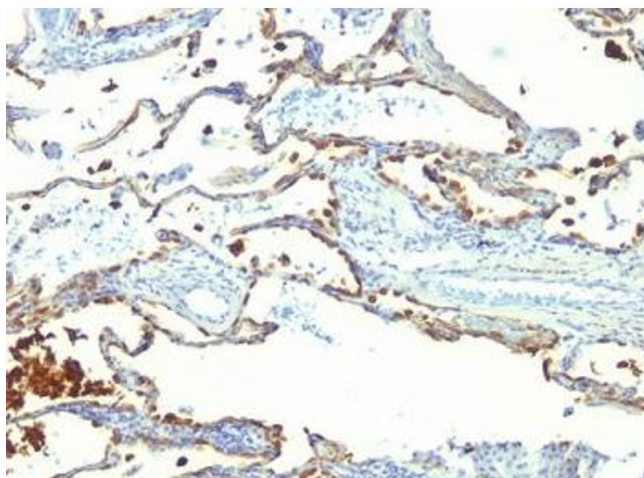
Storage: 4 °C,-20 °C

Storage Comment: Store the MFG-E8 antibody at 2-8°C (with azide) or aliquot and store at -20°C or colder (without azide).



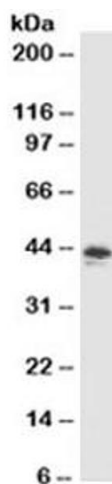
#### Immunohistochemistry (Formalin-fixed Paraffin-embedded Sections)

**Image 1.** FFPE human pancreas tested with MFG-E8 antibody (SPM291)



#### Immunohistochemistry (Formalin-fixed Paraffin-embedded Sections)

**Image 2.** FFPE human lung carcinoma tested with MFG-E8 antibody (SPM291)



#### Western Blotting

**Image 3.** Western blot testing of MCF7 cell lysate with MFG-E8 antibody (clone SPM291).

Please check the [product details page](#) for more images. Overall 4 images are available for ABIN3025860.