

Datasheet for ABIN3025866

anti-MFGE8 antibody

5 Images

[Go to Product page](#)

Overview

Quantity:	100 µg
Target:	MFGE8
Reactivity:	Human, Dog
Host:	Mouse
Clonality:	Monoclonal
Conjugate:	This MFGE8 antibody is un-conjugated
Application:	Western Blotting (WB), Flow Cytometry (FACS), Immunofluorescence (IF), Immunohistochemistry (Paraffin-embedded Sections) (IHC (p))

Product Details

Immunogen:	A human milk fat globule membrane preparation was used as the immunogen for the MFGE8 antibody.
Clone:	MFG-06
Isotype:	IgG1 kappa
No Cross-Reactivity:	Mouse (Murine), Rat (Rattus)
Purification:	Protein G affinity chromatography

Target Details

Target:	MFGE8
Alternative Name:	MFGE8 (MFGE8 Products)

Target Details

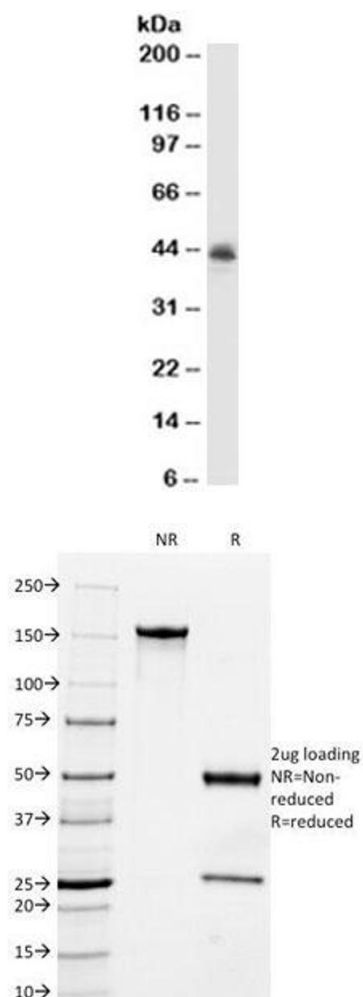
Background:	Recognizes a protein of 40-45 kDa, identified as human milk fat globule membrane protein (HMFG), Lactadherin, or MFG-E8. HMFG is present on normal human breast epithelial cells and cell lines derived from breast carcinomas, as well as to the outer surface of the human milk fat globule. HMFG is considered as a differentiation marker. It is useful as specific breast epithelial marker and can also provide a tool to study the role of the cell surface in normal and neoplastic mammary development.
Pathways:	SARS-CoV-2 Protein Interactome

Application Details

Application Notes:	<p>Optimal dilution of the MFGE8 antibody should be determined by the researcher.</p> <ol style="list-style-type: none">1. Staining of formalin-fixed tissues requires boiling tissue sections in 10 mM Citrate buffer, pH 6.0, for 10-20 min followed by cooling at RT for 20 minutes2. The prediluted format is supplied in a dropper bottle and is optimized for use in IHC. After epitope retrieval step (if required), drip mAb solution onto the tissue section and incubate at RT for 30 min.\. Western blot: 1-2 µg/mL, Flow Cytometry: 0.5-1 µg/million cells in 0.1ml,Immunofluorescence: 0.5-1 µg/mL,Immunohistochemistry (FFPE): 0.5-1 µg/mL for 30 min at RT (1),Prediluted format : incubate for 30 min at RT (2)
Restrictions:	For Research Use only

Handling

Concentration:	1 mg/mL
Buffer:	1 mg/mL in 1X PBS, BSA free, sodium azide free
Preservative:	Azide free
Storage:	4 °C,-20 °C
Storage Comment:	Store the MFGE8 antibody at 2-8°C (with azide) or aliquot and store at -20°C or colder (without azide).



Western Blotting

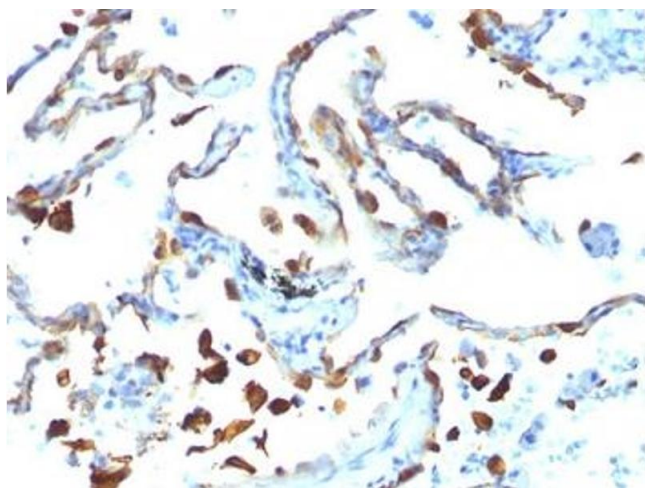
Image 1. Western blot testing of MCF7 cell lysate with MFGE8 antibody (clone MFG-06).

SDS-PAGE

Image 2. SDS-PAGE Analysis of Purified, BSA-Free MFGE8 Antibody (clone MFG-06). Confirmation of Integrity and Purity of the Antibody.

Immunohistochemistry (Formalin-fixed Paraffin-embedded Sections)

Image 3. FFPE human lung carcinoma tested with MFGE8 antibody (MFG-06)



Please check the [product details page](#) for more images. Overall 5 images are available for ABIN3025866.