

Datasheet for ABIN3026155

**anti-Cytomegalovirus (CMV) antibody**[Go to Product page](#)**1** Image

## Overview

Quantity:	100 µg
Target:	Cytomegalovirus (CMV)
Reactivity:	Cytomegalovirus (CMV)
Host:	Mouse
Clonality:	Monoclonal
Conjugate:	Un-conjugated
Application:	Immunofluorescence (IF), ELISA, Immunocytochemistry (ICC)

## Product Details

Clone:	CMV100
Isotype:	IgG1 kappa
Purification:	Protein G purified CMV antibody

## Target Details

Target:	Cytomegalovirus (CMV)
Alternative Name:	CMV Cytomegalovirus ( <a href="#">CMV Products</a> )
Target Type:	Virus
Background:	Ten to forty percent of the patients with acquired immunodeficiency syndrome (AIDS) develop Cytomegalovirus infections. In some patients with AIDS, the virus is detected in the bronchoalveolar lavage fluid (BALF), urine, and other specimens, even when there are no symptoms of the disease. An indicator of active infection is needed to facilitate the diagnosis of

Target Details

cytomgalovirus disease in patients with AIDS or HIV infection. Cytomegalovirus was detected in the leukocytes of both the peripheral blood and BALF during the early phase of the disease.

Application Details

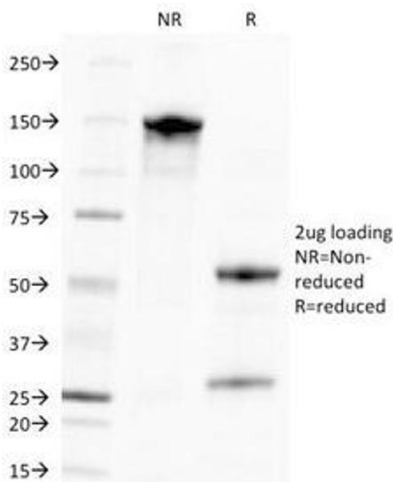
Application Notes: The concentration stated for each application is a general starting point. Variations in protocols, secondaries and substrates may require the CMV antibody to be titered up or down for optimal performance.\. ELISA: order BSA-free CMV antibody format for coating,Immunocytochemistry (Acetone or paraformaldehyde fixed) 0.5-1 µg/mL for 30 min,IF: 0.5-1 µg/mL

Restrictions: For Research Use only

Handling

Concentration:	1 mg/mL
Buffer:	1 mg/mL in 1X PBS, BSA free, sodium azide free
Preservative:	Azide free
Storage:	4 °C,-20 °C
Storage Comment:	Store the CMV antibody at 2-8°C (with azide) or aliquot and store at -20°C or colder (without azide).

Images



**SDS-PAGE**

**Image 1.** SDS-PAGE Analysis of Purified, BSA-Free CMV Antibody (clone CMV100). Confirmation of Integrity and Purity of the Antibody.