

Datasheet for ABIN3026306

Recombinant anti-Keratin Acidic (AE1) antibody[Go to Product page](#)**1** Image

Overview

Quantity:	100 µg
Target:	Keratin Acidic (AE1)
Reactivity:	Human
Host:	Rabbit
Antibody Type:	Recombinant Antibody
Clonality:	Monoclonal
Application:	Immunofluorescence (IF), Immunohistochemistry (Paraffin-embedded Sections) (IHC (p))

Product Details

Immunogen:	An amino acid sequence common to acidic/type I keratins was used as the immunogen for the Acidic Cytokeratin antibody.
Clone:	RMAK1-1
Isotype:	IgG kappa
Purification:	Protein A affinity chromatography

Target Details

Target:	Keratin Acidic (AE1)
Alternative Name:	Acidic Cytokeratin (AE1 Products)
Background:	There are two types of cytokeratins/keratins/CKs: the acidic type I cytokeratins and the basic or neutral type II cytokeratins. The subsets of cytokeratins which an epithelial cell expresses depends mainly on the type of epithelium, the moment in the course of terminal differentiation

Target Details

and the stage of development. Thus this specific keratin fingerprint allows the classification of all epithelia upon their keratin expression profile. Furthermore this applies also to the malignant counterparts of the epithelia (carcinomas), as the keratin profile tends to remain constant when an epithelium undergoes malignant transformation. The main clinical implication is that the study of the keratin profile by immunohistochemistry techniques is a tool of immense value widely used for tumor diagnosis and characterization in surgical pathology. [Wiki]

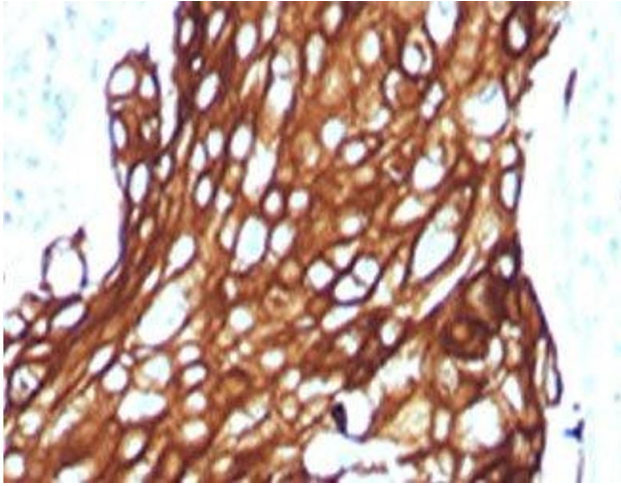
Application Details

Application Notes:	<p>Titring of the Acidic Cytokeratin antibody may be required for optimal performance.</p> <ol style="list-style-type: none">1. This antibody will detect cytokeratins -10, -14, -15, -16, -19.2. FFPE testing is enhanced by boiling sections in pH 6 10 mM citrate buffer for 10-20 minutes, followed by cooling at RT for 20 minutes, prior to staining.\. Immunofluorescence: 0.5-1 µg/mL, Immunohistochemistry (FFPE): 0.5-1 µg/mL for 30 min at RT (2)
--------------------	---

Restrictions:	For Research Use only
---------------	-----------------------

Handling

Concentration:	0.2 mg/mL
Buffer:	0.2 mg/mL in 1X PBS with 0.1 mg/mL BSA (US sourced) and 0.05 % sodium azide
Preservative:	Sodium azide
Precaution of Use:	This product contains Sodium azide: a POISONOUS AND HAZARDOUS SUBSTANCE which should be handled by trained staff only.
Storage:	4 °C,-20 °C
Storage Comment:	Store the Acidic Cytokeratin antibody at 2-8°C (with azide) or aliquot and store at -20°C or colder (without azide).



Immunohistochemistry

Image 1. IHC testing of FFPE human lung carcinoma with Acidic Cytokeratin antibody.