

Datasheet for ABIN3026636
anti-Cyclin D1 antibody**4** Images[Go to Product page](#)

Overview

Quantity:	100 µg
Target:	Cyclin D1 (CCND1)
Reactivity:	Human, Mouse, Rat, Monkey
Host:	Mouse
Clonality:	Monoclonal
Conjugate:	This Cyclin D1 antibody is un-conjugated
Application:	Western Blotting (WB), Flow Cytometry (FACS), Immunofluorescence (IF), Immunohistochemistry (Paraffin-embedded Sections) (IHC (p))

Product Details

Immunogen:	Human recombinant full length protein was used as the immunogen for this Cyclin D1 antibody.
Clone:	DCS-6
Isotype:	IgG2a kappa
Characteristics:	<p>This antibody recognizes a protein of 36 kDa, identified as Cyclin D1. It is a putative proto-oncogene overexpressed in a wide variety of human neoplasms and a key cell cycle regulator. This antibody neutralizes the activity of Cyclin D1 in vivo. About 60 % of mantle cell lymphomas (MCL) contain a t(11, 14)(q13, q32) translocation resulting in over-expression. Cyclin D1 antibody is useful in identifying mantle cell lymphomas, which stain positive, from CLL/SLL and follicular lymphomas, which stain negative. Occasionally, hairy cell leukemia and plasma cell myeloma weakly express Cyclin D1.</p>
Purification:	Protein G affinity chromatography

Target Details

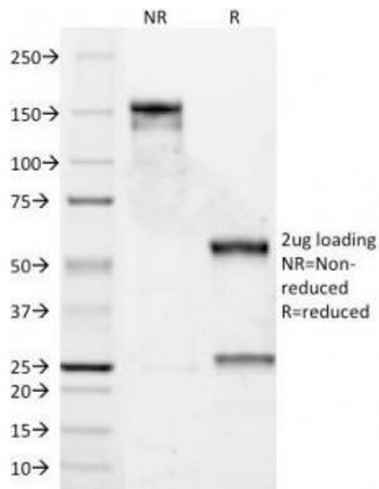
Target:	Cyclin D1 (CCND1)
Alternative Name:	Cyclin D1 (CCND1 Products)
Background:	<p>This antibody recognizes a protein of 36 kDa, identified as Cyclin D1. It is a putative proto-oncogene overexpressed in a wide variety of human neoplasms and a key cell cycle regulator. This antibody neutralizes the activity of Cyclin D1 in vivo. About 60 % of mantle cell lymphomas (MCL) contain a t(11, 14)(q13, q32) translocation resulting in over-expression. Cyclin D1 antibody is useful in identifying mantle cell lymphomas, which stain positive, from CLL/SLL and follicular lymphomas, which stain negative. Occasionally, hairy cell leukemia and plasma cell myeloma weakly express Cyclin D1.</p>
Gene ID:	595
Pathways:	PI3K-Akt Signaling , Cell Division Cycle , Mitotic G1-G1/S Phases , ER-Nucleus Signaling

Application Details

Application Notes:	<p>The concentration stated for each application is a general starting point. Variations in protocols, secondaries and substrates may require the Cyclin D1 antibody to be titrated up or down for optimal performance.</p> <ol style="list-style-type: none">1. Staining of formalin-fixed tissues requires boiling tissue sections in 10 mM citrate buffer, pH 6.0, for 10-20 min followed by cooling at RT for 20 minutes.2. The prediluted format is supplied in a dropper bottle and is optimized for use in IHC. After epitope retrieval step (if required), drip mAb solution onto the tissue section and incubate at RT for 30 min.\. FACS: 0.5-1 µg/million cells,IF: 1-2 µg/mL,WB: 0.5-1 µg/mL,IHC (FFPE): 0.5-1 µg/mL for 30 minutes at RT (1),Prediluted format : incubate for 30 min at RT (2)
Restrictions:	For Research Use only

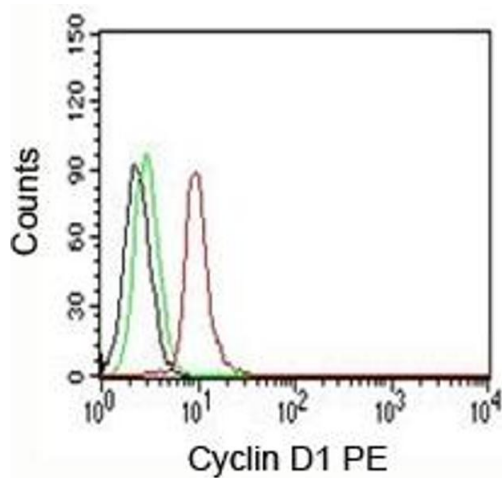
Handling

Concentration:	1 mg/mL
Buffer:	1 mg/mL in 1X PBS, BSA free, sodium azide free
Preservative:	Azide free
Storage:	4 °C,-20 °C
Storage Comment:	Store the Cyclin D1 antibody at 2-8°C (with azide) or aliquot and store at -20°C or colder (without azide).



SDS-PAGE

Image 1. SDS-PAGE Analysis of Purified, BSA-Free Cyclin D1 Antibody (DCS-6). Confirmation of Integrity and Purity of the Antibody.



Flow Cytometry

Image 2. FACS testing of Jurkat cells: Black=cells alone



Immunohistochemistry

Image 3. IHC testing of human mantle cell lymphoma stained with Cyclin D1 antibody. Nuclear staining of tumor cells is seen.

Please check the [product details page](#) for more images. Overall 4 images are available for ABIN3026636.