

Datasheet for ABIN3026694

anti-TAG-72 antibody**1** Image[Go to Product page](#)

Overview

Quantity:	100 µg
Target:	TAG-72
Reactivity:	Human
Host:	Mouse
Clonality:	Monoclonal
Conjugate:	This TAG-72 antibody is un-conjugated
Application:	Flow Cytometry (FACS), Immunofluorescence (IF), Immunohistochemistry (Paraffin-embedded Sections) (IHC (p))

Product Details

Immunogen:	Recombinant human TAG-72 protein was used as the immunogen for this antibody.
Clone:	TAGP-4
Isotype:	IgG1 kappa
Characteristics:	<p>This antibody recognizes an oncofetal antigen of 220 kDa, identified as a tumor-associated glycoprotein (TAG-72) with properties of a mucin. TAG-72 is usually expressed by adenocarcinomas, but is negative in mesotheliomas. Studies have reported that this antibody has 80 % sensitivity and 93 % specificity for pulmonary adenocarcinoma. Therefore, TAG-72 is a useful marker to distinguish between mesothelioma and adenocarcinoma. However, false positive reactions can occur so results must be interpreted with the utmost caution. This antibody may be useful in the differentiation of non-small cell carcinomas from small cell carcinomas of the lung. The combined use of TAG-72 antibody with a GCDFP-15 antibody is valuable in the diagnosis of apocrine carcinoma.</p>

Product Details

Purification: Protein G affinity chromatography

Target Details

Target: TAG-72

Alternative Name: TAG-72 ([TAG-72 Products](#))

Background: This antibody recognizes an oncofetal antigen of 220 kDa, identified as a tumor-associated glycoprotein (TAG-72) with properties of a mucin. TAG-72 is usually expressed by adenocarcinomas, but is negative in mesotheliomas. Studies have reported that this antibody has 80 % sensitivity and 93 % specificity for pulmonary adenocarcinoma. Therefore, TAG-72 is a useful marker to distinguish between mesothelioma and adenocarcinoma. However, false positive reactions can occur so results must be interpreted with the utmost caution. This antibody may be useful in the differentiation of non-small cell carcinomas from small cell carcinomas of the lung. The combined use of TAG-72 antibody with a GCDFP-15 antibody is valuable in the diagnosis of apocrine carcinoma.

Gene ID: 182875

Application Details

Application Notes: The concentration stated for each application is a general starting point. Variations in protocols, secondaries and substrates may require the TAG-72 antibody to be titrated up or down for optimal performance.

1. No pretreatment is required for staining of formalin-fixed, paraffin-embedded tissues.\. FACS: 0.5-1 µg/million cells,IF: 1-2 µg/mL,IHC (FFPE): 0.5-1 µg/mL for 30 minutes at RT (1)

Restrictions: For Research Use only

Handling

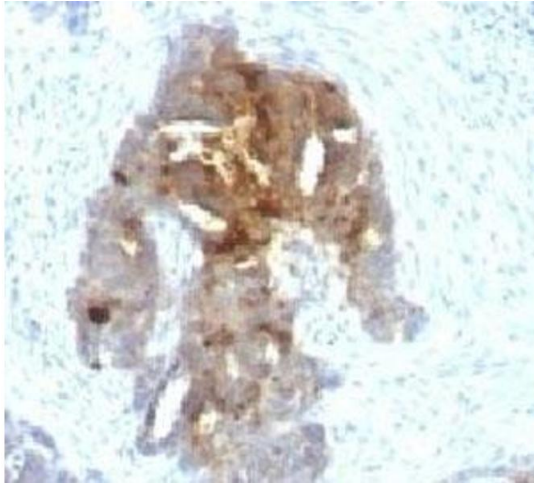
Concentration: 1 mg/mL

Buffer: 1 mg/mL in 1X PBS, BSA free, sodium azide free

Preservative: Azide free

Storage: 4 °C,-20 °C

Storage Comment: Store the TAG-72 antibody at 2-8°C (with azide) or aliquot and store at -20°C or colder (without azide).



Immunohistochemistry

Image 1. IHC testing of human ovarian carcinoma with TAG-72 antibody.