

Datasheet for ABIN3026697

anti-TAG-72 antibody[Go to Product page](#)**1** Image

Overview

Quantity:	100 µg
Target:	TAG-72
Reactivity:	Human, Rat, Cow, Dog, Hamster
Host:	Mouse
Clonality:	Monoclonal
Conjugate:	This TAG-72 antibody is un-conjugated
Application:	Flow Cytometry (FACS), Immunofluorescence (IF), Immunohistochemistry (Paraffin-embedded Sections) (IHC (p))

Product Details

Immunogen:	The membrane-enriched fraction of a human breast carcinoma liver metastasis was used as the immunogen for this TAG-72 antibody.
Clone:	B72-3
Isotype:	IgG1 kappa
Characteristics:	This antibody recognizes an oncofetal antigen of 220 kDa, identified as a tumor-associated glycoprotein (TAG-72) with properties of a mucin. This antibody defines the mucin-carried sialylated-Tn epitope. TAG-72 is usually expressed by adenocarcinomas, but is negative in mesotheliomas. Studies have reported that this antibody has 80 % sensitivity and 93 % specificity for pulmonary adenocarcinoma. Therefore, TAG-72 is a useful marker to distinguish between mesothelioma and adenocarcinoma. However, false positive reactions can occur so results must be interpreted with the utmost caution. This antibody may be useful in the differentiation of non-small cell carcinomas from small cell carcinomas of the lung. The

Product Details

combined use of TAG-72 Ab with a GCDFP-15 Ab is valuable in the diagnosis of apocrine carcinoma.

Purification: Protein G affinity chromatography

Target Details

Target: TAG-72

Alternative Name: TAG-72 ([TAG-72 Products](#))

Background: This antibody recognizes an oncofetal antigen of 220 kDa, identified as a tumor-associated glycoprotein (TAG-72) with properties of a mucin. This antibody defines the mucin-carried sialylated-Tn epitope. TAG-72 is usually expressed by adenocarcinomas, but is negative in mesotheliomas. Studies have reported that this antibody has 80 % sensitivity and 93 % specificity for pulmonary adenocarcinoma. Therefore, TAG-72 is a useful marker to distinguish between mesothelioma and adenocarcinoma. However, false positive reactions can occur so results must be interpreted with the utmost caution. This antibody may be useful in the differentiation of non-small cell carcinomas from small cell carcinomas of the lung. The combined use of TAG-72 Ab with a GCDFP-15 Ab is valuable in the diagnosis of apocrine carcinoma.

Gene ID: 182875

Application Details

Application Notes: The concentration stated for each application is a general starting point. Variations in protocols, secondaries and substrates may require the TAG-72 antibody to be titrated up or down for optimal performance.

1. No pretreatment is required for staining of formalin-fixed, paraffin-embedded tissues.
2. The prediluted format is supplied in a dropper bottle and is optimized for use in IHC. After epitope retrieval step (if required), drip mAb solution onto the tissue section and incubate at RT for 30 min.\. FACS: 0.5-1 µg/million cells,IF: 1-2 µg/mL,IHC (FFPE): 0.5-1 µg/mL for 30 minutes at RT (1),Prediluted format : incubate for 30 min at RT (2)

Restrictions: For Research Use only

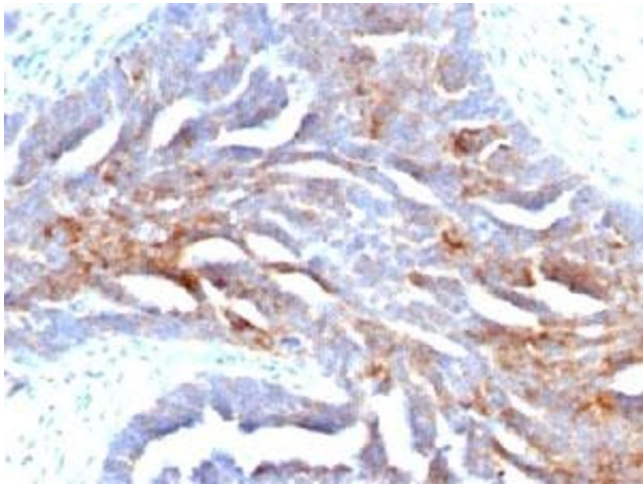
Handling

Concentration: 1 mg/mL

Handling

Buffer:	1 mg/mL in 1X PBS, BSA free, sodium azide free
Preservative:	Azide free
Storage:	4 °C,-20 °C
Storage Comment:	Store the TAG-72 antibody at 2-8°C (with azide) or aliquot and store at -20°C or colder (without azide).

Images



Immunohistochemistry

Image 1. IHC staining of human ovarian carcinoma with TAG-72 antibody