



Datasheet for ABIN302671 anti-RREB1 antibody



[Go to Product page](#)

1 Image

Overview

Quantity:	50 µg
Target:	RREB1
Reactivity:	Human, Mouse
Host:	Rabbit
Clonality:	Polyclonal
Conjugate:	This RREB1 antibody is un-conjugated
Application:	Western Blotting (WB), Immunohistochemistry (Paraffin-embedded Sections) (IHC (p)), Immunofluorescence (IF), Enzyme Immunoassay (EIA)

Product Details

Immunogen:	Recombinant protein
Specificity:	This antibody recognizes Mouse RREB1 protein.
Cross-Reactivity (Details):	Species reactivity (expected):Human. Species reactivity (tested):Mouse.
Purification:	Protein A Chromatography

Target Details

Target:	RREB1
Alternative Name:	RREB1 (RREB1 Products)
Background:	RREB1 (also known as RAS-responsive element binding protein 1 and Raf responsive zinc finger protein) is a transcription factor that binds specifically to the distal RAS-responsive

Target Details

element (RRE) in the calcitonin gene promoter and augments the Ras/Raf-mediated transcriptional response of that promoter. RREB1 may be involved in Ras/Raf-mediated cell differentiation. RREB is a nuclear protein expressed in heart, placenta, lung, liver, skeletal muscle, kidney and pancreas and is not found in the brain. The protein contains 4 C2H2-type zinc fingers. Synonyms: FINB, Finger protein in nuclear bodies, RREB-1, Raf-responsive zinc finger protein LZ321, Ras-responsive element-binding protein 1, Zep-1, Zinc finger motif enhancer-binding protein 1

Gene ID: 6239

NCBI Accession: [NP_001003698](#)

UniProt: [Q92766](#)

Application Details

Application Notes: Immunofluorescence. Western Blot: 1: 5000 - 1: 2000. Immunohistochemistry: 10 µg/mL. ELISA: 1: 2000 - 1: 10000.
Other applications not tested.
Optimal dilutions are dependent on conditions and should be determined by the user.

Restrictions: For Research Use only

Handling

Concentration: 1.0 mg/mL

Buffer: 0.02 M Potassium Phosphate, 0.12 M Sodium Chloride, pH 7.2 with 0.01 % (w/v) Sodium Azide as preservative

Preservative: Sodium azide

Precaution of Use: This product contains sodium azide: a POISONOUS AND HAZARDOUS SUBSTANCE which should be handled by trained staff only.

Handling Advice: Avoid repeated freezing and thawing.

Storage: 4 °C/-20 °C

Storage Comment: Store the antibody undiluted at 2-8 °C for one month or (in aliquots) at -20 °C for longer.

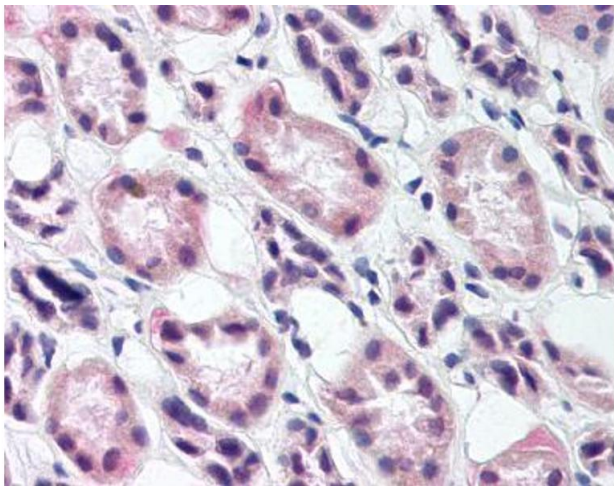


Image 1.