



Datasheet for ABIN3026864 **anti-SUMO1 antibody**



[Go to Product page](#)

4 Images

Overview

Quantity:	100 µg
Target:	SUMO1
Reactivity:	Human, Rat
Host:	Mouse
Clonality:	Monoclonal
Application:	Western Blotting (WB), Immunofluorescence (IF), Flow Cytometry (FACS), Immunohistochemistry (Paraffin-embedded Sections) (IHC (p))

Product Details

Immunogen:	Recombinant human protein was used as the immunogen for the SUMO-1 antibody.
Clone:	SUMO1-1188
Isotype:	IgG1 kappa
Characteristics:	This mAb is specific to SUMO-1 and shows no cross-reaction with either SUMO-2 or SUMO-3. The small ubiquitin-related modifier (SUMO) proteins, which include SUMO-1, SUMO-2 and SUMO-3, belong to the ubiquitin-like protein family. Like ubiquitin, the SUMO proteins are synthesized as precursor proteins that undergo processing before conjugation to target proteins. Also, both utilize the E1, E2, and E3 cascade enzymes for conjugation. However, SUMO and ubiquitin differ with respect to targeting. Ubiquitination predominantly targets proteins for degradation, whereas sumoylation targets proteins to a variety of cellular processing, including nuclear transport, transcriptional regulation, apoptosis and protein stability. The unconjugated SUMO-1 protein localizes to the nuclear membrane.
Purification:	Protein G affinity chromatography

Target Details

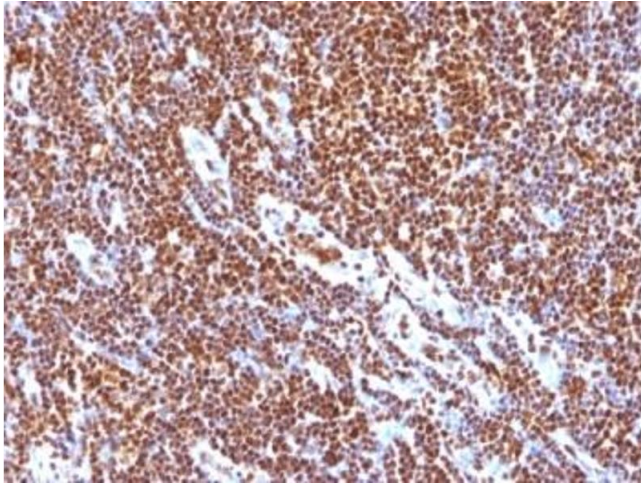
Target:	SUMO1
Alternative Name:	SUMO-1 (SENP2) (SUMO1 Products)
Background:	<p>This mAb is specific to SUMO-1 and shows no cross-reaction with either SUMO-2 or SUMO-3. The small ubiquitin-related modifier (SUMO) proteins, which include SUMO-1, SUMO-2 and SUMO-3, belong to the ubiquitin-like protein family. Like ubiquitin, the SUMO proteins are synthesized as precursor proteins that undergo processing before conjugation to target proteins. Also, both utilize the E1, E2, and E3 cascade enzymes for conjugation. However, SUMO and ubiquitin differ with respect to targeting. Ubiquitination predominantly targets proteins for degradation, whereas sumoylation targets proteins to a variety of cellular processing, including nuclear transport, transcriptional regulation, apoptosis and protein stability. The unconjugated SUMO-1 protein localizes to the nuclear membrane.</p>
Pathways:	M Phase , Positive Regulation of Endopeptidase Activity , Protein targeting to Nucleus , Ubiquitin Proteasome Pathway

Application Details

Application Notes:	<p>Optimal dilution of the SUMO-1 antibody should be determined by the researcher.</p> <ol style="list-style-type: none">1. Staining of formalin-fixed tissues requires boiling tissue sections in 10 mM Citrate buffer, pH 6.0, for 10-20 min followed by cooling at RT for 20 min.2. The prediluted format is supplied in a dropper bottle and is optimized for use in IHC. After epitope retrieval step (if required), drip mAb solution onto the tissue section and incubate at RT for 30 min.\. Flow Cytometry: 0.5-1 µg/million cells in 0.1ml,Immunofluorescence: 0.5-1 µg/mL,Western blot: 0.5-1 µg/mL,Immunohistochemistry (FFPE): 0.5-1 µg/mL for 30 min at RT (1),Prediluted format: incubate for 30 min at RT (2)
Restrictions:	For Research Use only

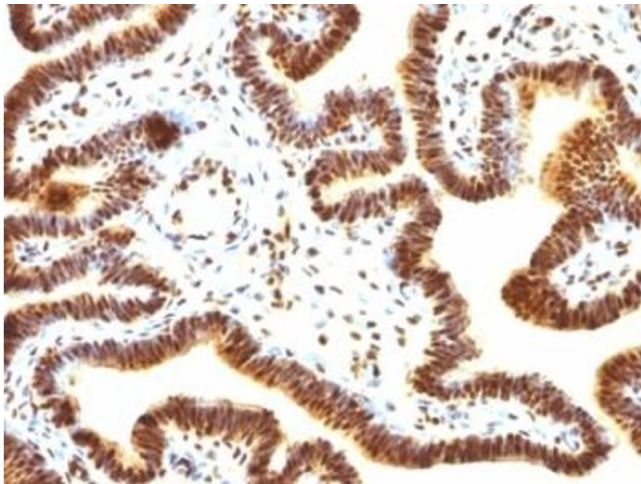
Handling

Concentration:	1 mg/mL
Buffer:	1 mg/mL in 1X PBS, BSA free, sodium azide free
Preservative:	Azide free
Storage:	4 °C,-20 °C
Storage Comment:	Store the SUMO-1 antibody at 2-8°C (with azide) or aliquot and store at -20°C or colder (without azide).



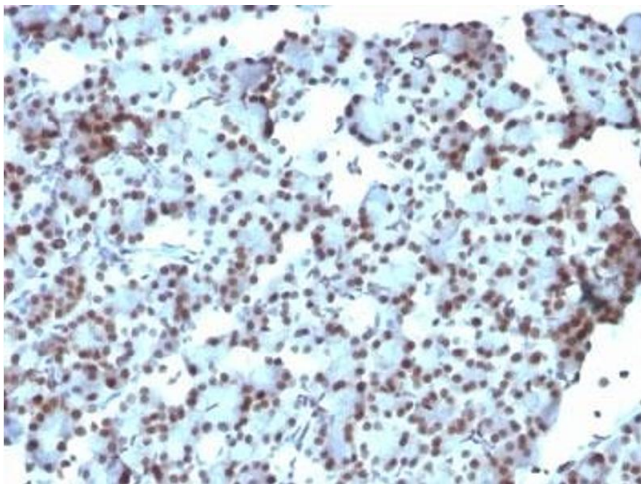
Immunohistochemistry (Formalin-fixed Paraffin-embedded Sections)

Image 1. Formalin-fixed, paraffin-embedded human tonsil stained with SUMO-1 antibody (SUMO1/1188)



Immunohistochemistry (Formalin-fixed Paraffin-embedded Sections)

Image 2. Formalin-fixed, paraffin-embedded human ovarian carcinoma stained with SUMO-1 antibody (SUMO1/1188)



Immunohistochemistry (Formalin-fixed Paraffin-embedded Sections)

Image 3. Formalin-fixed, paraffin-embedded rat pancreas stained with SUMO-1 antibody (SUMO1/1188)

Please check the [product details page](#) for more images. Overall 4 images are available for ABIN3026864.