

Datasheet for ABIN3026955  
**anti-Cytokeratin 18 antibody**



[Go to Product page](#)

4 Images

## Overview

Quantity:	100 µg
Target:	Cytokeratin 18 (KRT18)
Reactivity:	Human
Host:	Mouse
Clonality:	Monoclonal
Conjugate:	This Cytokeratin 18 antibody is un-conjugated
Application:	Immunofluorescence (IF), Flow Cytometry (FACS), Immunohistochemistry (Paraffin-embedded Sections) (IHC (p))

## Product Details

Immunogen:	Recombinant full-length human KRT18 protein was used as the immunogen for the Cytokeratin 18 antibody cocktail.
Clone:	KRT18 Cocktail
Isotype:	IgG
Characteristics:	This mAb reacts with a wide variety of simple epithelia. It does not react with stratified squamous epithelia. It reacts with epithelial tumors of the gastrointestinal tract, lung, breast, pancreas, ovary, and thyroid. Cytokeratin 18, which belongs to the type A (acidic) subfamily of low molecular weight keratins, exists in combination with cytokeratin 8. It is reported that tissues from gastrointestinal tract are positive for both cytokeratin 8 and 18 but do not contain cytokeratin 14. Tissues from gastrointestinal tract, respiratory tract and urogenital tract, as well as endocrine and exocrine tissues and mesothelial cells are positive for cytokeratin 18.

## Product Details

---

Purification: Protein G affinity chromatography

## Target Details

---

Target: Cytokeratin 18 (KRT18)

Alternative Name: Cytokeratin 18 ([KRT18 Products](#))

Background: This mAb reacts with a wide variety of simple epithelia. It does not react with stratified squamous epithelia. It reacts with epithelial tumors of the gastrointestinal tract, lung, breast, pancreas, ovary, and thyroid. Cytokeratin 18, which belongs to the type A (acidic) subfamily of low molecular weight keratins, exists in combination with cytokeratin 8. It is reported that tissues from gastrointestinal tract are positive for both cytokeratin 8 and 18 but do not contain cytokeratin 14. Tissues from gastrointestinal tract, respiratory tract and urogenital tract, as well as endocrine and exocrine tissues and mesothelial cells are positive for cytokeratin 18.

Pathways: [Apoptosis, Caspase Cascade in Apoptosis](#)

## Application Details

---

Application Notes: Optimal dilution of the Cytokeratin 18 antibody cocktail should be determined by the researcher.

1. Staining of formalin-fixed tissues requires boiling tissue sections in 10 mM Citrate buffer, pH 6.0, for 10-20 min followed by cooling at RT for 20 min
2. The prediluted format is supplied in a dropper bottle and is optimized for use in IHC. After epitope retrieval step (if required), drip mAb solution onto the tissue section and incubate at RT for 30 min.\. Flow Cytometry: 0.5-1 µg/million cells in 0.1ml,Immunofluorescence: 1-2 µg/mL,Immunohistochemistry (FFPE): 0.5-1 µg/mL for 30 min at RT (1),Prediluted format : incubate for 30 min at RT (2)

Restrictions: For Research Use only

## Handling

---

Concentration: 1 mg/mL

Buffer: 1 mg/mL in 1X PBS, BSA free, sodium azide free

Preservative: Azide free

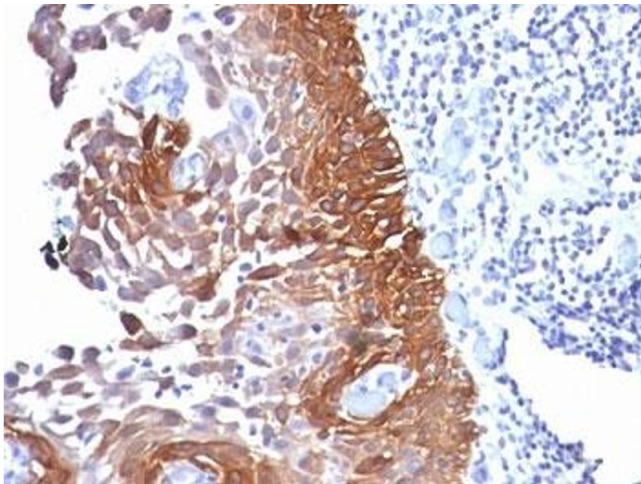
Storage: 4 °C,-20 °C

Storage Comment: Store the Cytokeratin 18 antibody cocktail at 2-8°C (with azide) or aliquot and store at -20°C or colder (without azide).



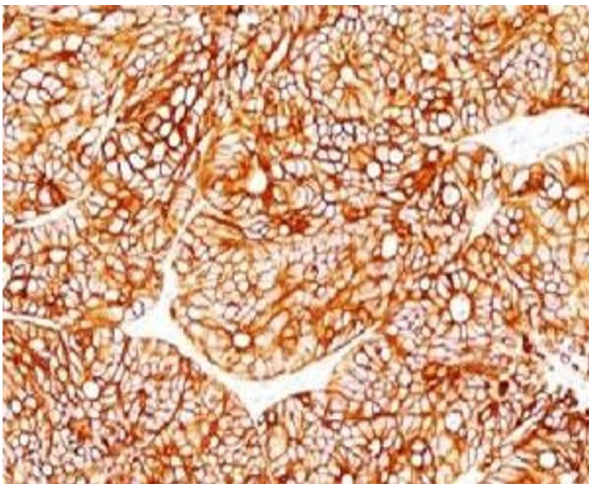
**Immunohistochemistry (Formalin-fixed Paraffin-embedded Sections)**

**Image 1.** Formalin-fixed, paraffin-embedded human prostate carcinoma stained with Cytokeratin 18 antibody.



**Immunohistochemistry (Formalin-fixed Paraffin-embedded Sections)**

**Image 2.** Formalin-fixed, paraffin-embedded human cervical carcinoma stained with Cytokeratin 18 antibody.



**Immunohistochemistry (Formalin-fixed Paraffin-embedded Sections)**

**Image 3.** Formalin-fixed, paraffin-embedded human colon carcinoma stained with Cytokeratin 18 antibody.

Please check the [product details page](#) for more images. Overall 4 images are available for ABIN3026955.