

Datasheet for ABIN3028446
anti-beta Actin antibody[Go to Product page](#)

7 Images

Overview

Quantity:	0.4 mL
Target:	beta Actin (ACTB)
Reactivity:	Human, Mouse, Rat
Host:	Mouse
Clonality:	Monoclonal
Conjugate:	This beta Actin antibody is un-conjugated
Application:	Western Blotting (WB), ELISA, Immunohistochemistry (IHC)

Product Details

Immunogen:	ACTB recombinant protein was used to produce this monoclonal beta Actin antibody.
Clone:	8H10D10
Isotype:	IgG
Purification:	Purified

Target Details

Target:	beta Actin (ACTB)
Alternative Name:	beta Actin (ACTB Products)
Background:	This gene encodes one of six different actin proteins. Actins are highly conserved proteins that are involved in cell motility, structure, and integrity. This actin is a major constituent of the contractile apparatus. It is classically referred to as being a 'nonmuscle' actin, however expression is ubiquitous, strongly in lymph tissue and weakly in heart and muscle.

Target Details

UniProt:	P60709
Pathways:	Myometrial Relaxation and Contraction , Cell-Cell Junction Organization , Maintenance of Protein Location , Phototransduction

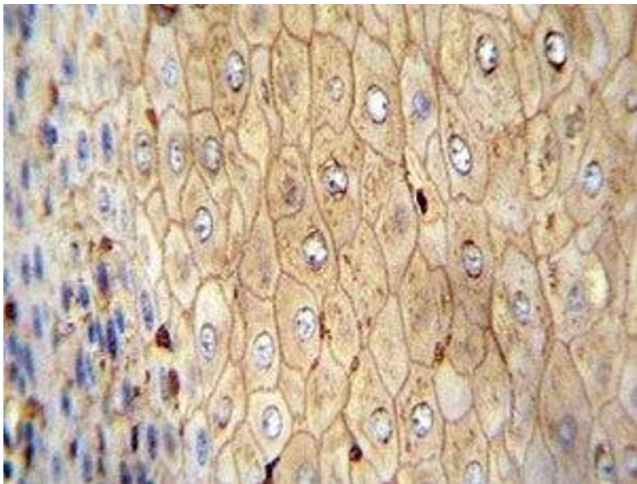
Application Details

Application Notes:	Titration of the beta-Actin antibody may be required due to differences in protocols and secondary/substrate sensitivity.\. Western blot: 1:1000,IHC (Paraffin): 1:10-1:50
Restrictions:	For Research Use only

Handling

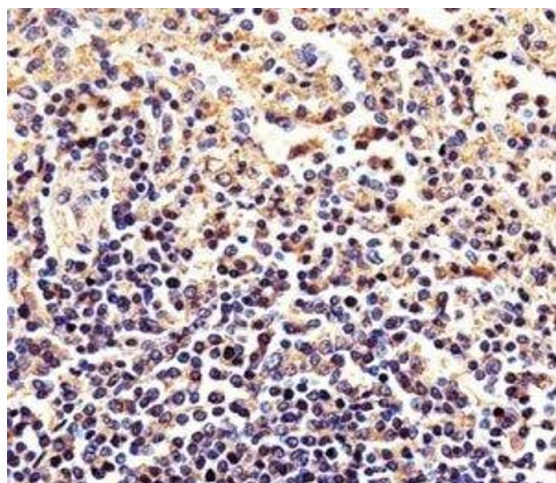
Format:	Liquid
Buffer:	In 1X PBS pH 7.4 with 0.09 % sodium azide
Preservative:	Sodium azide
Precaution of Use:	This product contains Sodium azide: a POISONOUS AND HAZARDOUS SUBSTANCE which should be handled by trained staff only.
Storage:	-20 °C
Storage Comment:	Aliquot the beta-Actin antibody and store frozen at -20°C or colder. Avoid repeated freeze-thaw cycles.

Images



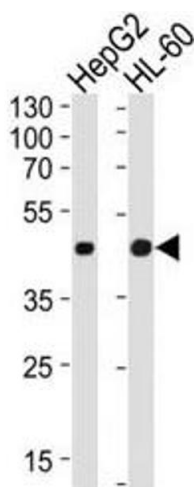
Immunohistochemistry

Image 1. Beta-Actin antibody immunohistochemistry analysis in formalin fixed and paraffin embedded human esophageal carcinoma.



Immunohistochemistry

Image 2. Immunohistochemical analysis of paraffin-embedded human spleen using beta-Actin antibody at 1:25 dilution.



Western Blotting

Image 3. Western blot analysis of lysate from HepG2, HL-60 cell line (left to right) using beta-Actin antibody at 1:1000 for each lane.

Please check the [product details page](#) for more images. Overall 7 images are available for ABIN3028446.