



[Go to Product page](#)

Datasheet for ABIN3028448
anti-ATF5 antibody (AA 188-216)

2 Images

Overview

Quantity:	0.4 mL
Target:	ATF5
Binding Specificity:	AA 188-216
Reactivity:	Human
Host:	Rabbit
Clonality:	Polyclonal
Conjugate:	This ATF5 antibody is un-conjugated
Application:	Western Blotting (WB), ELISA

Product Details

Immunogen:	A portion of amino acids 188-216 from the human protein was used as the immunogen for this ATF5 antibody.
Isotype:	Ig Fraction
Purification:	Antigen affinity purified

Target Details

Target:	ATF5
Alternative Name:	ATF5 (ATF5 Products)
Background:	Transcriptional activator which binds the cAMP response element (CRE) (consensus: 5'-GTGACGT[AC][AG]-3'), a sequence present in many viral and cellular promoters and blocks the differentiation of neuroprogenitor cells into neurons. Its transcriptional activity is enhanced by

Target Details

CCND3 and slightly inhibited by CDK4.

UniProt: [Q9Y2D1](#)

Pathways: [Myometrial Relaxation and Contraction](#)

Application Details

Application Notes: Titration of the ATF5 antibody may be required due to differences in protocols and secondary/substrate sensitivity.\. Western blot: 1:1000

Restrictions: For Research Use only

Handling

Format: Liquid

Buffer: In 1X PBS pH 7.4 with 0.09 % sodium azide

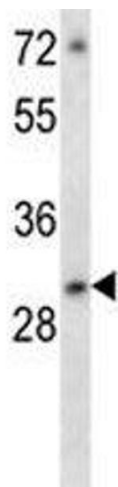
Preservative: Sodium azide

Precaution of Use: This product contains Sodium azide: a POISONOUS AND HAZARDOUS SUBSTANCE which should be handled by trained staff only.

Storage: -20 °C

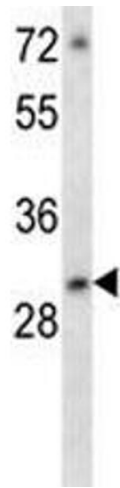
Storage Comment: Aliquot the ATF5 antibody and store frozen at -20°C or colder. Avoid repeated freeze-thaw cycles.

Images



Western Blotting

Image 1. ATF5 antibody western blot analysis in MCF-7 lysate



Western Blotting

Image 2. ATF5 antibody western blot analysis in MCF-7 lysate