

Datasheet for ABIN3028449
anti-ATF6 antibody (AA 350-377)[Go to Product page](#)

5 Images

Overview

Quantity:	0.4 mL
Target:	ATF6
Binding Specificity:	AA 350-377
Reactivity:	Human
Host:	Rabbit
Clonality:	Polyclonal
Conjugate:	This ATF6 antibody is un-conjugated
Application:	Western Blotting (WB), Immunohistochemistry (IHC), ELISA, Flow Cytometry (FACS)

Product Details

Immunogen:	A portion of amino acids 350-377 from the human protein was used as the immunogen for this ATF6 antibody.
Isotype:	Ig Fraction
Cross-Reactivity (Details):	Expected species reactivity: Mouse, Rat
Purification:	Antigen affinity purified

Target Details

Target:	ATF6
Alternative Name:	ATF6 (ATF6 Products)
Background:	ATF6 is an endoplasmic reticulum (ER) stress-regulated transmembrane transcription factor

Target Details

that activates the transcription of ER molecules.

UniProt: [P18850](#)

Pathways: [ER-Nucleus Signaling](#), [Unfolded Protein Response](#)

Application Details

Application Notes: Titration of the ATF6 antibody may be required due to differences in protocols and secondary/substrate sensitivity.\. Western blot: 1:1000,IHC (Paraffin): 1:10-1:50,Flow Cytometry: 1:10-1:50

Restrictions: For Research Use only

Handling

Format: Liquid

Buffer: In 1X PBS pH 7.4 with 0.09 % sodium azide

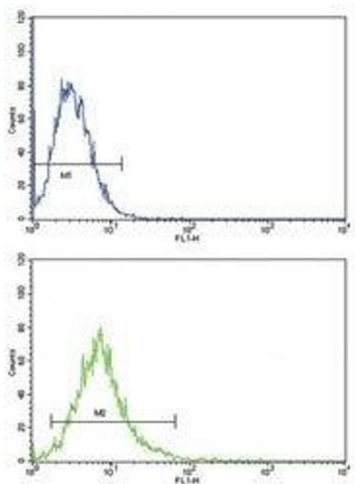
Preservative: Sodium azide

Precaution of Use: This product contains Sodium azide: a POISONOUS AND HAZARDOUS SUBSTANCE which should be handled by trained staff only.

Storage: -20 °C

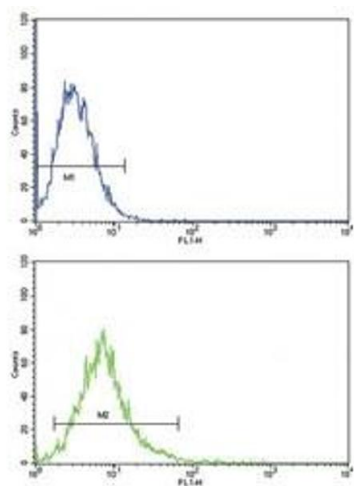
Storage Comment: Aliquot the ATF6 antibody and store frozen at -20°C or colder. Avoid repeated freeze-thaw cycles.

Images



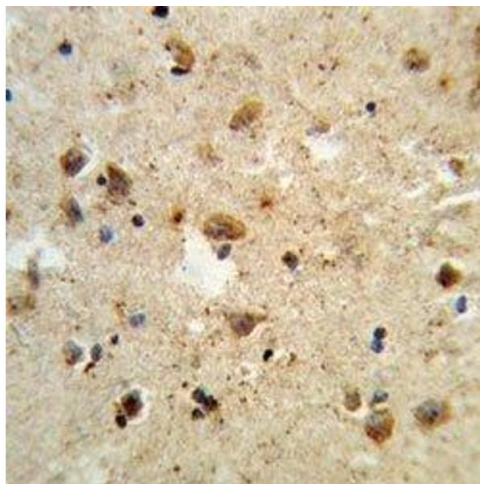
Flow Cytometry

Image 1. ATF6 antibody flow cytometric analysis of K562 cells (bottom histogram) compared to a negative control (top histogram). FITC-conjugated goat-anti-rabbit secondary Ab was used for the analysis.



Flow Cytometry

Image 2. ATF6 antibody flow cytometric analysis of K562 cells (bottom histogram) compared to a negative control (top histogram). FITC-conjugated goat-anti-rabbit secondary Ab was used for the analysis.



Immunohistochemistry

Image 3. IHC analysis of FFPE human brain tissue stained with ATF6 antibody

Please check the [product details page](#) for more images. Overall 5 images are available for ABIN3028449.