



[Go to Product page](#)

Datasheet for ABIN3028450  
**anti-AFT7 antibody (AA 68-96)**

5 Images

Overview

Quantity:	0.4 mL
Target:	AFT7
Binding Specificity:	AA 68-96
Reactivity:	Human
Host:	Rabbit
Clonality:	Polyclonal
Conjugate:	This AFT7 antibody is un-conjugated
Application:	Western Blotting (WB), ELISA, Immunofluorescence (IF), Flow Cytometry (FACS)

Product Details

Immunogen:	A portion of amino acids 68-96 from the human protein was used as the immunogen for this ATF7 antibody.
Isotype:	Ig Fraction
Purification:	Antigen affinity purified

Target Details

Target:	AFT7
Alternative Name:	ATF7 ( <a href="#">AFT7 Products</a> )
Background:	The cyclic AMP-dependent transcription factor ATF7 is a member of the bZIP family of proteins and is known to bind to the cAMP response element (CRE) as a homodimer.

## Target Details

UniProt: [P17544](#)

## Application Details

Application Notes: Titration of the ATF7 antibody may be required due to differences in protocols and secondary/substrate sensitivity.\. Western blot: 1:1000,Immunofluorescence: 1:10-1:50,Flow Cytometry: 1:10-1:50

Restrictions: For Research Use only

## Handling

Format: Liquid

Buffer: In 1X PBS pH 7.4 with 0.09 % sodium azide

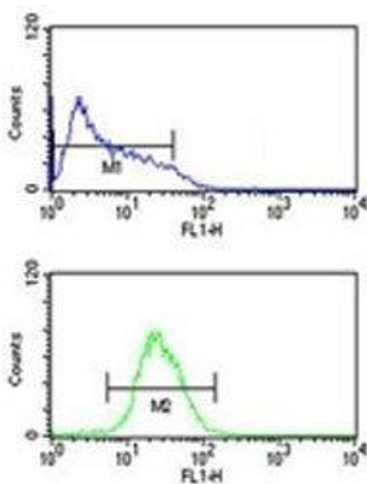
Preservative: Sodium azide

Precaution of Use: This product contains Sodium azide: a POISONOUS AND HAZARDOUS SUBSTANCE which should be handled by trained staff only.

Storage: -20 °C

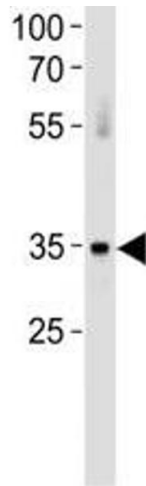
Storage Comment: Aliquot the ATF7 antibody and store frozen at -20°C or colder. Avoid repeated freeze-thaw cycles.

## Images



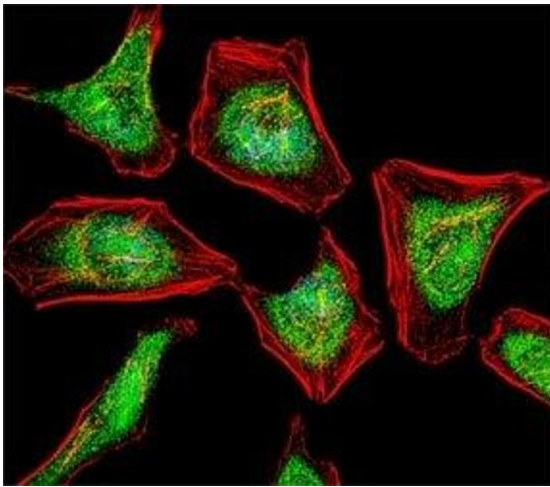
### Flow Cytometry

**Image 1.** ATF7 antibody flow cytometric analysis of HL-60 cells (bottom histogram) compared to a negative control (top histogram). FITC-conjugated goat-anti-rabbit secondary Ab was used for the analysis.



### Western Blotting

**Image 2.** ATF7 antibody western blot analysis in human placenta tissue lysate



### Immunofluorescence

**Image 3.** Fluorescent confocal image of HeLa cell stained with ATF7 antibody at 1:25. Immunoreactivity is localized to the nucleus and cytoplasm.

Please check the [product details page](#) for more images. Overall 5 images are available for ABIN3028450.