

Datasheet for ABIN3028458
anti-ALDH1L2 antibody (AA 743-772)[Go to Product page](#)

3 Images

Overview

Quantity:	0.4 mL
Target:	ALDH1L2
Binding Specificity:	AA 743-772
Reactivity:	Mouse
Host:	Rabbit
Clonality:	Polyclonal
Conjugate:	This ALDH1L2 antibody is un-conjugated
Application:	ELISA, Western Blotting (WB), Immunohistochemistry (IHC)

Product Details

Immunogen:	A portion of amino acids 743-772 from the human protein was used as the immunogen for this ALDH1L2 antibody.
Isotype:	Ig Fraction
Cross-Reactivity (Details):	Expected species reactivity: Xenopus
Purification:	Antigen affinity purified

Target Details

Target:	ALDH1L2
Alternative Name:	ALDH1L2 (ALDH1L2 Products)
Background:	Mitochondrial 10-formyltetrahydrofolate dehydrogenase

Target Details

UniProt: [Q3SY69](#)

Application Details

Application Notes: Titration of the ALDH1L2 antibody may be required due to differences in protocols and secondary/substrate sensitivity.\. Western blot: 1:1000,IHC (Paraffin): 1:50-1:100

Restrictions: For Research Use only

Handling

Format: Liquid

Buffer: In 1X PBS, pH 7.4, with 0.09 % sodium azide

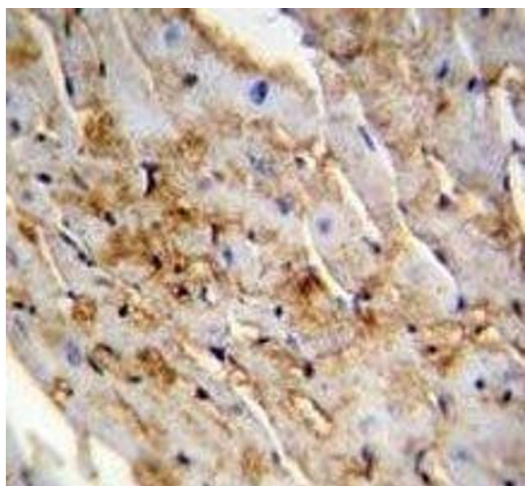
Preservative: Sodium azide

Precaution of Use: This product contains Sodium azide: a POISONOUS AND HAZARDOUS SUBSTANCE which should be handled by trained staff only.

Storage: -20 °C

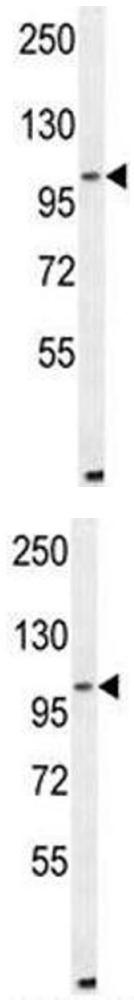
Storage Comment: Aliquot the ALDH1L2 antibody and store frozen at -20°C or colder. Avoid repeated freeze-thaw cycles.

Images



Immunohistochemistry

Image 1. ALDH1L2 antibody immunohistochemistry analysis in formalin fixed and paraffin embedded mouse heart tissue.



Western Blotting

Image 2. ALDH1L2 antibody western blot analysis in mouse NIH3T3 lysate

Western Blotting

Image 3. ALDH1L2 antibody western blot analysis in mouse NIH3T3 lysate