

Datasheet for ABIN3028461
anti-ANGPTL6 antibody (AA 206-236)[Go to Product page](#)

2 Images

Overview

Quantity:	0.4 mL
Target:	ANGPTL6
Binding Specificity:	AA 206-236
Reactivity:	Human
Host:	Rabbit
Clonality:	Polyclonal
Conjugate:	This ANGPTL6 antibody is un-conjugated
Application:	Western Blotting (WB), ELISA

Product Details

Immunogen:	A portion of amino acids 206-236 from the human protein was used as the immunogen for this ANGPTL6 antibody.
Isotype:	Ig Fraction
Purification:	Purified

Target Details

Target:	ANGPTL6
Alternative Name:	ANGPTL6 (ANGPTL6 Products)
Background:	ANGPTL6 may play a role in the wound healing process. It may promote epidermal proliferation, remodeling and regeneration and may promote the chemotactic activity of endothelial cells and induce neovascularization. ANGPTL6 may counteract high-fat diet-induced obesity and related

Target Details

insulin resistance through increased energy expenditure.

UniProt: [Q8NI99](#)

Pathways: [Regulation of Actin Filament Polymerization](#)

Application Details

Application Notes: Titration of the ANGPTL6 antibody may be required due to differences in protocols and secondary/substrate sensitivity.\. Western blot: 1:1000

Restrictions: For Research Use only

Handling

Format: Liquid

Buffer: In 1X PBS, pH 7.4, with 0.09 % sodium azide

Preservative: Sodium azide

Precaution of Use: This product contains Sodium azide: a POISONOUS AND HAZARDOUS SUBSTANCE which should be handled by trained staff only.

Storage: -20 °C

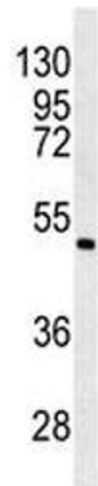
Storage Comment: Aliquot the ANGPTL6 antibody and store frozen at -20°C or colder. Avoid repeated freeze-thaw cycles.

Images



Western Blotting

Image 1. Western blot analysis of ANGPTL6 antibody and K562 lysate.



Western Blotting

Image 2. Western blot analysis of ANGPTL6 antibody and K562 lysate.