

Datasheet for ABIN3028462
anti-ANGPTL7 antibody (AA 300-350)[Go to Product page](#)

5 Images

Overview

Quantity:	0.4 mL
Target:	ANGPTL7
Binding Specificity:	AA 300-350
Reactivity:	Human
Host:	Rabbit
Clonality:	Polyclonal
Conjugate:	This ANGPTL7 antibody is un-conjugated
Application:	Western Blotting (WB), ELISA, Immunohistochemistry (IHC), Flow Cytometry (FACS)

Product Details

Immunogen:	A portion of amino acids 300-350 from the human protein was used as the immunogen for this ANGPTL7 antibody.
Isotype:	Ig Fraction
Purification:	Purified

Target Details

Target:	ANGPTL7
Alternative Name:	ANGPTL7 (ANGPTL7 Products)
Background:	Angiopoietin-like Protein 7, also called Corneal-Derived Transcript 6/CDT6, is a secreted, 45-50 kDa glycoprotein member of the angiopoietin-like family of molecules expressed in the corneal stroma, trabecular meshwork, and sclera.

Target Details

UniProt: [O43827](#)

Application Details

Application Notes: Titration of the ANGPTL7 antibody may be required due to differences in protocols and secondary/substrate sensitivity.\. Western blot: 1:1000,IHC (Paraffin): 1:10-1:50,Flow Cytometry: 1:10-1:50

Restrictions: For Research Use only

Handling

Format: Liquid

Buffer: In 1X PBS, pH 7.4, with 0.09 % sodium azide

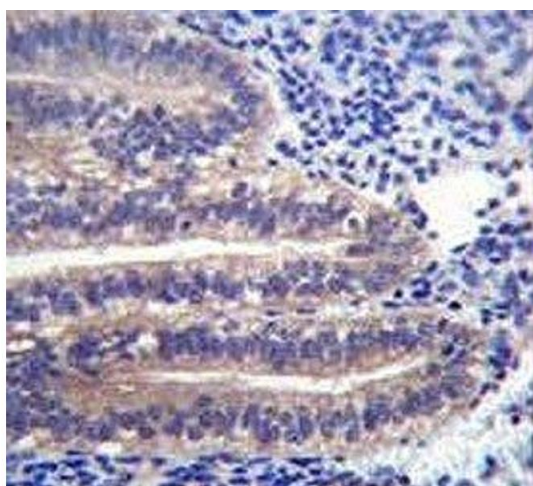
Preservative: Sodium azide

Precaution of Use: This product contains Sodium azide: a POISONOUS AND HAZARDOUS SUBSTANCE which should be handled by trained staff only.

Storage: -20 °C

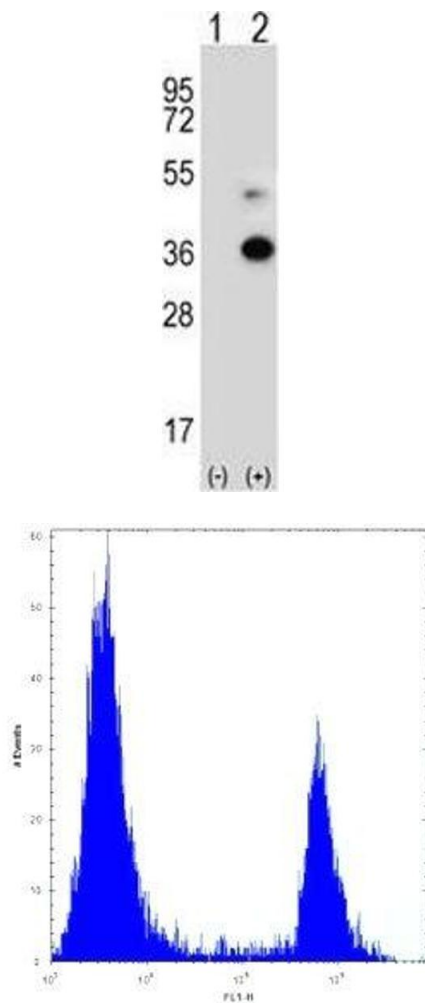
Storage Comment: Aliquot the ANGPTL7 antibody and store frozen at -20°C or colder. Avoid repeated freeze-thaw cycles.

Images



Immunohistochemistry

Image 1. ANGPTL7 antibody immunohistochemistry analysis in formalin fixed and paraffin embedded human uterus tissue.



Western Blotting

Image 2. Western blot analysis of ANGPTL7 antibody and 293 cell lysate either nontransfected (Lane 1) or transiently transfected (2) with the ANGPTL7 gene. Predicted molecular weight ~35 kDa, observed at 35-50 kDa depending on glycosylation level.

Flow Cytometry

Image 3. ANGPTL7 antibody flow cytometric analysis of 293 cells (right histogram) compared to a negative control (left histogram). FITC-conjugated goat-anti-rabbit secondary Ab was used for the analysis.

Please check the [product details page](#) for more images. Overall 5 images are available for ABIN3028462.