

Datasheet for ABIN3028466  
**anti-ANO1 antibody (AA 453-482)**



[Go to Product page](#)

2 Images

## Overview

Quantity:	0.4 mL
Target:	ANO1
Binding Specificity:	AA 453-482
Reactivity:	Human
Host:	Rabbit
Clonality:	Polyclonal
Conjugate:	This ANO1 antibody is un-conjugated
Application:	Western Blotting (WB), ELISA

## Product Details

Immunogen:	A portion of amino acids 453-482 from the human protein was used as the immunogen for this DOG1 antibody.
Isotype:	Ig Fraction
Purification:	Antigen affinity purified

## Target Details

Target:	ANO1
Alternative Name:	DOG1 ( <a href="#">ANO1 Products</a> )
Background:	ANO1 acts as a calcium-activated chloride channel. Required for normal tracheal development (By similarity).

## Target Details

UniProt: [Q5XXA6](#)

## Application Details

Application Notes: Titration of the DOG1 antibody may be required due to differences in protocols and secondary/substrate sensitivity.\. Western blot: 1:1000

Restrictions: For Research Use only

## Handling

Format: Liquid

Buffer: In 1X PBS, pH 7.4, with 0.09 % sodium azide

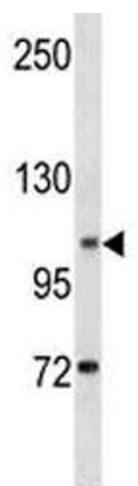
Preservative: Sodium azide

Precaution of Use: This product contains Sodium azide: a POISONOUS AND HAZARDOUS SUBSTANCE which should be handled by trained staff only.

Storage: -20 °C

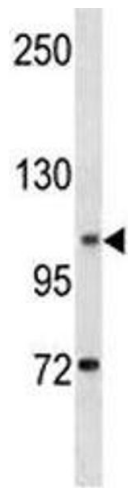
Storage Comment: Aliquot the DOG1 antibody and store frozen at -20°C or colder. Avoid repeated freeze-thaw cycles.

## Images



### Western Blotting

**Image 1.** DOG1 antibody western blot analysis in K562 lysate



### Western Blotting

**Image 2.** DOG1 antibody western blot analysis in K562 lysate