



[Go to Product page](#)

Datasheet for ABIN3028471
anti-AQP11 antibody (AA 244-271)

5 Images

Overview

Quantity:	0.4 mL
Target:	AQP11
Binding Specificity:	AA 244-271
Reactivity:	Human, Mouse
Host:	Rabbit
Clonality:	Polyclonal
Conjugate:	This AQP11 antibody is un-conjugated
Application:	Western Blotting (WB), ELISA, Immunohistochemistry (IHC), Flow Cytometry (FACS)

Product Details

Immunogen:	A portion of amino acids 244-271 from the human protein was used as the immunogen for this AQP11 antibody.
Isotype:	Ig Fraction
Purification:	Antigen affinity purified

Target Details

Target:	AQP11
Alternative Name:	AQP11 (AQP11 Products)
Background:	Aquaporins facilitate the transport of water and small neutral solutes across cell membranes (By similarity).

Target Details

UniProt: [Q8NBQ7](#)

Application Details

Application Notes: Titration of the AQP11 antibody may be required due to differences in protocols and secondary/substrate sensitivity.\. Western blot: 1:1000,IHC (Paraffin): 1:50-1:100,Flow Cytometry: 1:10-1:50

Restrictions: For Research Use only

Handling

Format: Liquid

Buffer: In 1X PBS, pH 7.4, with 0.09 % sodium azide

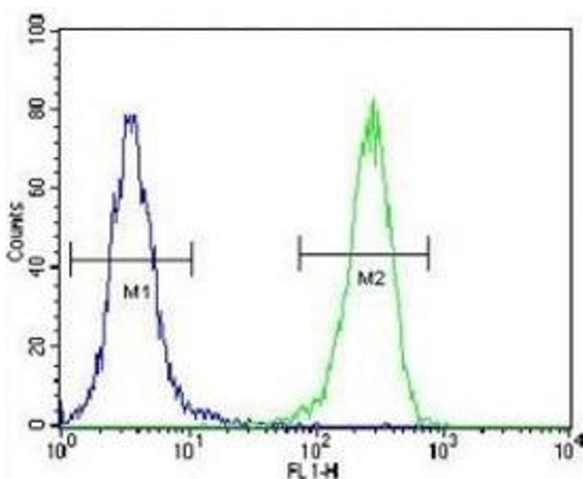
Preservative: Sodium azide

Precaution of Use: This product contains Sodium azide: a POISONOUS AND HAZARDOUS SUBSTANCE which should be handled by trained staff only.

Storage: -20 °C

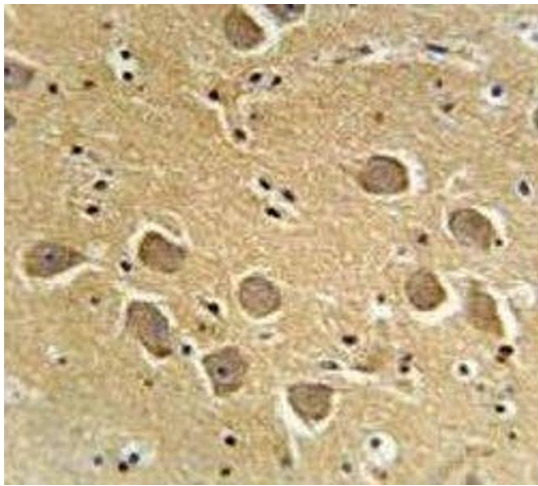
Storage Comment: Aliquot the AQP11 antibody and store frozen at -20°C or colder. Avoid repeated freeze-thaw cycles.

Images



Flow Cytometry

Image 1. AQP11 antibody flow cytometric analysis of 293 cells (green) compared to a negative control (blue). FITC-conjugated goat-anti-rabbit secondary Ab was used for the analysis.



Immunohistochemistry

Image 2. AQP11 antibody immunohistochemistry analysis in formalin fixed and paraffin embedded human brain tissue.



Western Blotting

Image 3. AQP11 antibody western blot analysis in mouse heart tissue lysate.

Please check the [product details page](#) for more images. Overall 5 images are available for ABIN3028471.