

Datasheet for ABIN3028485
anti-ATG12 antibody



[Go to Product page](#)

7 Images

Overview

Quantity:	0.4 mL
Target:	ATG12
Reactivity:	Human
Host:	Mouse
Clonality:	Monoclonal
Conjugate:	This ATG12 antibody is un-conjugated
Application:	Western Blotting (WB), ELISA, Immunohistochemistry (IHC), Immunofluorescence (IF)

Product Details

Immunogen:	APG12L recombinant protein was used to produce this monoclonal antibody.
Clone:	43CT73-3-5-5-4
Isotype:	IgG2b kappa
Purification:	Purified

Target Details

Target:	ATG12
Alternative Name:	ATG12 (ATG12 Products)
Background:	Autophagy is a process of bulk protein degradation in which cytoplasmic components, including organelles, are enclosed in double-membrane structures called autophagosomes and delivered to lysosomes or vacuoles for degradation. ATG12 is the human homolog of a yeast protein involved in autophagy.

Target Details

UniProt: [O94817](#)

Pathways: [Autophagy](#)

Application Details

Application Notes: Titration of the ATG12 antibody may be required due to differences in protocols and secondary/substrate sensitivity. Western blot: 1:200-1:2000, IHC (Paraffin): 1:50-1:200, Immunofluorescence: 1:10-1:50

Restrictions: For Research Use only

Handling

Format: Liquid

Buffer: In 1X PBS pH 7.4 with 0.09 % sodium azide

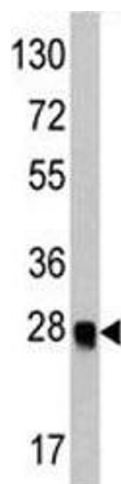
Preservative: Sodium azide

Precaution of Use: This product contains Sodium azide: a POISONOUS AND HAZARDOUS SUBSTANCE which should be handled by trained staff only.

Storage: -20 °C

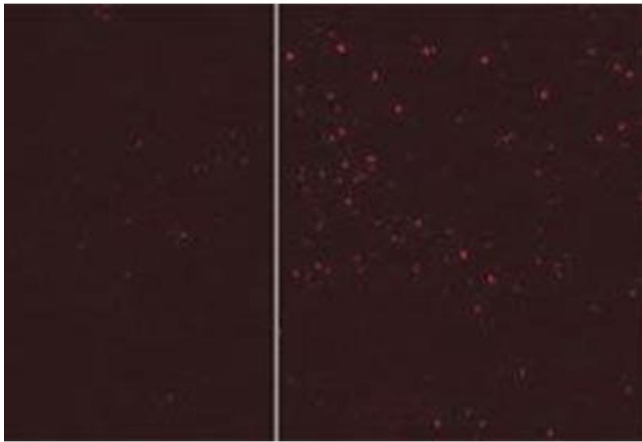
Storage Comment: Aliquot the ATG12 antibody and store frozen at -20°C or colder. Avoid repeated freeze-thaw cycles.

Images



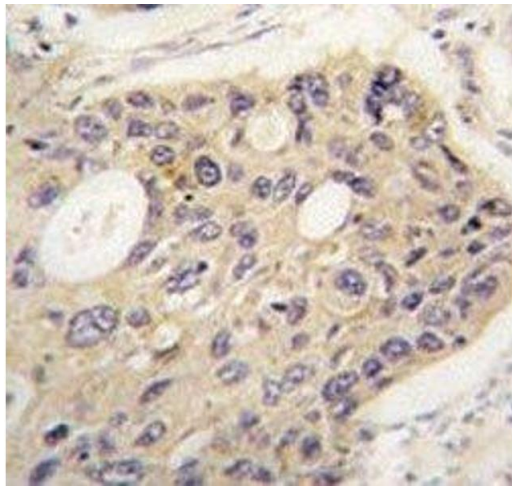
Western Blotting

Image 1. Western blot analysis of ATG12 antibody and recombinant protein.



Immunohistochemistry

Image 2. ATG12 antibody tested in 293 cells, fixed in PFA permeabilized with 0.2% Saponin, blocked with 10% goat serum. Secondary was mouse 555. The right is in full medium (FM) and the left with EBSS (no Leupeptin) (Provided by Nicole McKnight & Sharon Tooze).



Immunohistochemistry

Image 3. IHC analysis of FFPE human lung carcinoma tissue stained with ATG12 antibody

Please check the [product details page](#) for more images. Overall 7 images are available for ABIN3028485.