

Datasheet for ABIN3028489
anti-BCL11B antibody (AA 307-334)[Go to Product page](#)

2 Images

Overview

Quantity:	0.4 mL
Target:	BCL11B
Binding Specificity:	AA 307-334
Reactivity:	Human
Host:	Rabbit
Clonality:	Polyclonal
Conjugate:	This BCL11B antibody is un-conjugated
Application:	Western Blotting (WB), ELISA

Product Details

Immunogen:	A portion of amino acids 307-334 from the human protein was used as the immunogen for this BCL11B antibody.
Isotype:	Ig Fraction
Cross-Reactivity (Details):	Expected species reactivity: Mouse
Purification:	Antigen affinity purified

Target Details

Target:	BCL11B
Alternative Name:	BCL11B (BCL11B Products)
Background:	This gene encodes a C2H2-type zinc finger protein and is closely related to BCL11A, a gene

Target Details

whose translocation may be associated with B-cell malignancies. The specific function of this gene has not yet been determined. Two alternatively spliced transcript variants, which encode distinct isoforms, have been reported.

UniProt: [Q9C0K0](#)

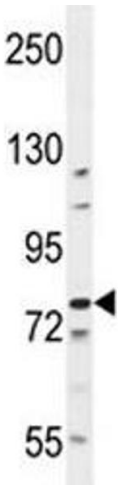
Application Details

Application Notes:	Titration of the BCL11B antibody may be required due to differences in protocols and secondary/substrate sensitivity.\. Western blot: 1:1000
Restrictions:	For Research Use only

Handling

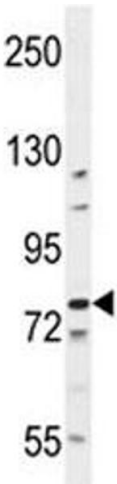
Format:	Liquid
Buffer:	In 1X PBS, pH 7.4, with 0.09 % sodium azide
Preservative:	Sodium azide
Precaution of Use:	This product contains Sodium azide: a POISONOUS AND HAZARDOUS SUBSTANCE which should be handled by trained staff only.
Storage:	-20 °C
Storage Comment:	Aliquot the BCL11B antibody and store frozen at -20°C or colder. Avoid repeated freeze-thaw cycles.

Images



Western Blotting

Image 1. BCL11B antibody western blot analysis in K562 lysate



Western Blotting

Image 2. BCL11B antibody western blot analysis in K562 lysate