

Datasheet for ABIN3028491
anti-PUMA antibody (AA 109-137)



[Go to Product page](#)

3 Images

Overview

Quantity:	0.4 mL
Target:	PUMA (BBC3)
Binding Specificity:	AA 109-137
Reactivity:	Human
Host:	Rabbit
Clonality:	Polyclonal
Conjugate:	This PUMA antibody is un-conjugated
Application:	Western Blotting (WB), ELISA, Immunohistochemistry (IHC)

Product Details

Immunogen:	A portion of amino acids 109-137 from the human protein was used as the immunogen for this Puma antibody.
Isotype:	Ig Fraction
Purification:	Antigen affinity purified

Target Details

Target:	PUMA (BBC3)
Alternative Name:	Puma (BBC3 Products)
Background:	Puma is an essential mediator of p53-dependent and p53-independent apoptosis.
UniProt:	Q9BXH1

Target Details

Pathways: [p53 Signaling](#), [Positive Regulation of Endopeptidase Activity](#)

Application Details

Application Notes: Titration of the Puma antibody may be required due to differences in protocols and secondary/substrate sensitivity.\. Western blot: 1:1000,IHC (Paraffin): 1:10-1:50

Restrictions: For Research Use only

Handling

Format: Liquid

Buffer: In 1X PBS pH 7.4 with 0.09 % sodium azide

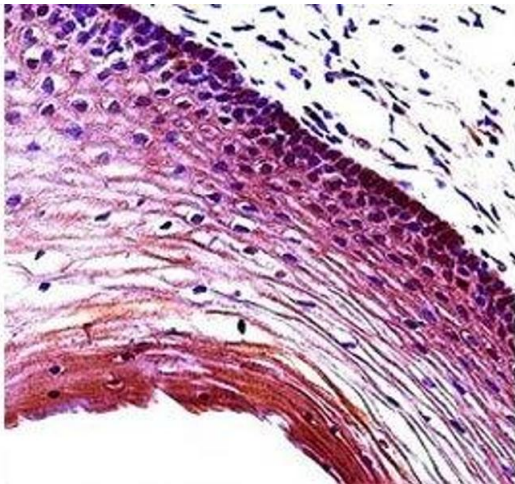
Preservative: Sodium azide

Precaution of Use: This product contains Sodium azide: a POISONOUS AND HAZARDOUS SUBSTANCE which should be handled by trained staff only.

Storage: -20 °C

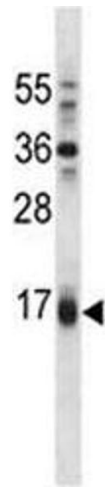
Storage Comment: Aliquot the Puma antibody and store frozen at -20°C or colder. Avoid repeated freeze-thaw cycles.

Images



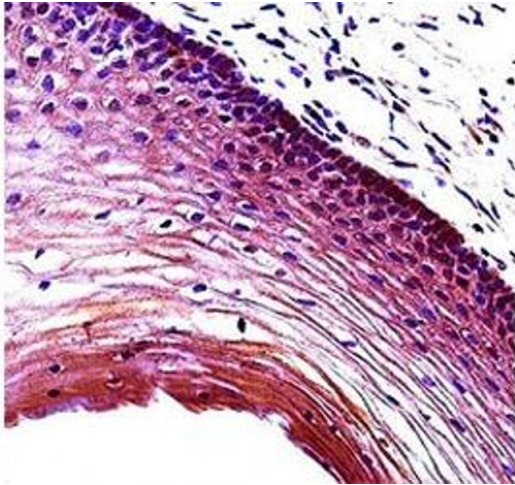
Immunohistochemistry

Image 1. Puma antibody immunohistochemistry analysis in formalin fixed and paraffin embedded human cervix tissue.



Western Blotting

Image 2. Puma antibody western blot analysis in A549 lysate. Predicted molecular weight ~ 22 kDa.



Immunohistochemistry

Image 3. Puma antibody immunohistochemistry analysis in formalin fixed and paraffin embedded human cervix tissue.