

Datasheet for ABIN3028500
anti-BNIP2 antibody (AA 285-316)[Go to Product page](#)

3 Images

Overview

Quantity:	0.4 mL
Target:	BNIP2
Binding Specificity:	AA 285-316
Reactivity:	Human
Host:	Rabbit
Clonality:	Polyclonal
Conjugate:	This BNIP2 antibody is un-conjugated
Application:	Western Blotting (WB), ELISA, Immunohistochemistry (IHC)

Product Details

Immunogen:	A portion of amino acids 285-316 from the human protein was used as the immunogen for this BNIP2 antibody.
Isotype:	Ig Fraction
Purification:	Antigen affinity purified

Target Details

Target:	BNIP2
Alternative Name:	BNIP2 (BNIP2 Products)
Background:	<p>This gene is a member of the BCL2/adenovirus E1B 19 kd-interacting protein (BNIP) family.</p> <p>Though the specific function is unknown, it interacts with the E1B 19 kDa protein which is responsible for the protection of virally-induced cell death, as well as E1B 19 kDa-like sequences</p>

Target Details

of BCL2, also an apoptotic protector.

UniProt: [Q12982](#)

Pathways: [Regulation of Muscle Cell Differentiation](#)

Application Details

Application Notes: Titration of the BNIP2 antibody may be required due to differences in protocols and secondary/substrate sensitivity.\. Western blot: 1:1000,IHC (Paraffin): 1:10-1:50

Restrictions: For Research Use only

Handling

Format: Liquid

Buffer: In 1X PBS, pH 7.4, with 0.09 % sodium azide

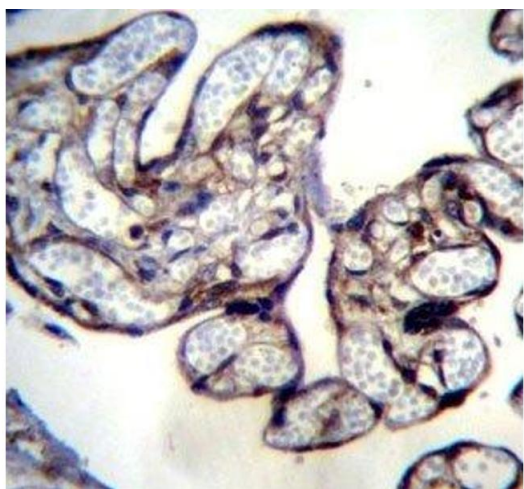
Preservative: Sodium azide

Precaution of Use: This product contains Sodium azide: a POISONOUS AND HAZARDOUS SUBSTANCE which should be handled by trained staff only.

Storage: -20 °C

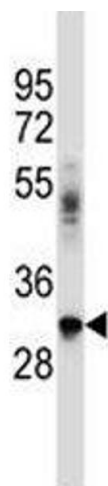
Storage Comment: Aliquot the BNIP2 antibody and store frozen at -20°C or colder. Avoid repeated freeze-thaw cycles.

Images



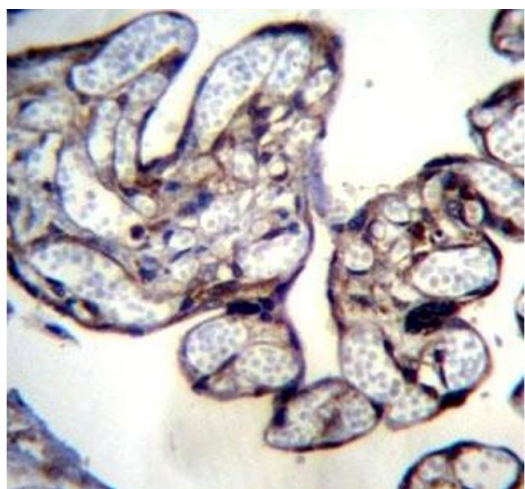
Immunohistochemistry

Image 1. BNIP2 antibody immunohistochemistry analysis in formalin fixed and paraffin embedded human placenta tissue.



Western Blotting

Image 2. BNIP2 antibody western blot analysis in A549 lysate



Immunohistochemistry

Image 3. BNIP2 antibody immunohistochemistry analysis in formalin fixed and paraffin embedded human placenta tissue.