



Datasheet for ABIN3028503
anti-Beclin 1 antibody (AA 95-132)



[Go to Product page](#)

5 Images

Overview

Quantity:	0.4 mL
Target:	Beclin 1 (BECN1)
Binding Specificity:	AA 95-132
Reactivity:	Human, Mouse
Host:	Rabbit
Clonality:	Polyclonal
Conjugate:	This Beclin 1 antibody is un-conjugated
Application:	Western Blotting (WB), ELISA, Immunohistochemistry (IHC), Flow Cytometry (FACS)

Product Details

Immunogen:	A portion of amino acids 95-132 from the human protein was used as the immunogen for this Beclin1 antibody.
Isotype:	Ig Fraction
Cross-Reactivity (Details):	Expected species reactivity: Bovine, Chicken, Pig, Rat, Xenopus
Purification:	Antigen affinity purified

Target Details

Target:	Beclin 1 (BECN1)
Alternative Name:	Beclin1 (BECN1 Products)
Background:	Beclin1-BH3 plays a central role in autophagy (By similarity). It may play a role in antiviral host

Target Details

defense. Protects against infection by a neurovirulent strain of Sindbis virus.

UniProt: [Q14457](#)

Pathways: [Autophagy](#)

Application Details

Application Notes: Titration of the Beclin1 antibody may be required due to differences in protocols and secondary/substrate sensitivity.\. Western blot: 1:1000,IHC (Paraffin): 1:50-1:100,Flow Cytometry: 1:10-1:50

Restrictions: For Research Use only

Handling

Format: Liquid

Buffer: In 1X PBS pH 7.4 with 0.09 % sodium azide

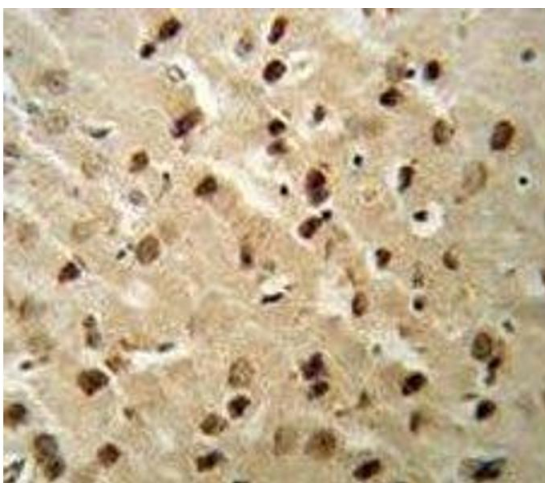
Preservative: Sodium azide

Precaution of Use: This product contains Sodium azide: a POISONOUS AND HAZARDOUS SUBSTANCE which should be handled by trained staff only.

Storage: -20 °C

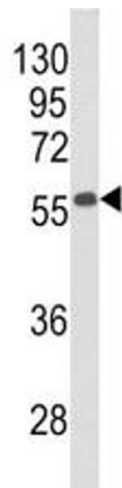
Storage Comment: Aliquot the Beclin1 antibody and store frozen at -20°C or colder. Avoid repeated freeze-thaw cycles.

Images



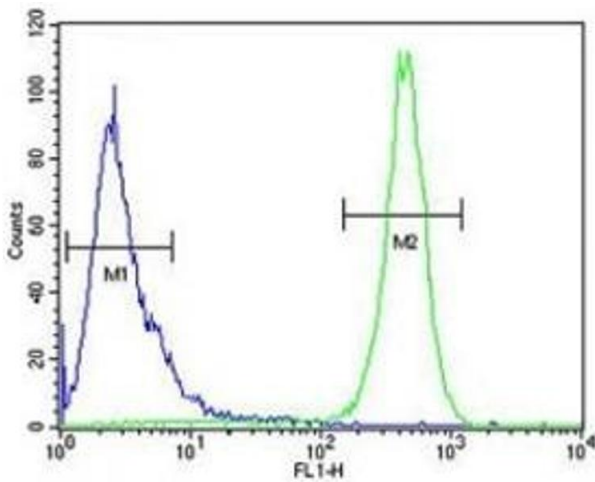
Immunohistochemistry

Image 1. Beclin1 antibody IHC analysis in formalin fixed and paraffin embedded mouse brain tissue.



Western Blotting

Image 2. Western blot analysis of Beclin1 antibody and mouse stomach tissue lysate.



Flow Cytometry

Image 3. Beclin1 antibody flow cytometric analysis of HeLa cells (right histogram) compared to a negative control (left histogram). FITC-conjugated goat-anti-rabbit secondary Ab was used for the analysis.

Please check the [product details page](#) for more images. Overall 5 images are available for ABIN3028503.