



[Go to Product page](#)

Datasheet for ABIN3028509

anti-BMI1 antibody (AA 257-286)

5 Images

Overview

| | |
|----------------------|--|
| Quantity: | 0.4 mL |
| Target: | BMI1 |
| Binding Specificity: | AA 257-286 |
| Reactivity: | Human |
| Host: | Rabbit |
| Clonality: | Polyclonal |
| Application: | Western Blotting (WB), ELISA, Immunohistochemistry (IHC) |

Product Details

| | |
|-----------------------------|---|
| Immunogen: | A portion of amino acids 257-286 from the human protein was used as the immunogen for this BMI1 antibody. |
| Isotype: | Ig Fraction |
| Cross-Reactivity (Details): | Expected species reactivity: Mouse, Bovine, Chicken |
| Purification: | Antigen affinity purified |

Target Details

| | |
|-------------------|---|
| Target: | BMI1 |
| Alternative Name: | BMI1 (BMI1 Products) |
| Background: | BMI is a component of the Polycomb group (PcG) multiprotein PRC1 complex, a complex required to maintain the transcriptionally repressive state of many genes, including Hox genes, throughout development. [UniProt] |

Target Details

UniProt: [P35226](#)

Pathways: [Cell Division Cycle, Autophagy](#)

Application Details

Application Notes: Titration of the BMI1 antibody may be required due to differences in protocols and secondary/substrate sensitivity.\. Western blot: 1:1000,IHC (Paraffin): 1:10-1:50

Restrictions: For Research Use only

Handling

Format: Liquid

Buffer: In 1X PBS, pH 7.4, with 0.09 % sodium azide

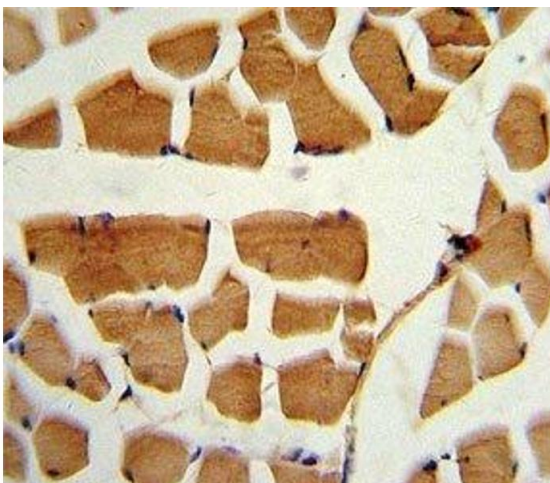
Preservative: Sodium azide

Precaution of Use: This product contains Sodium azide: a POISONOUS AND HAZARDOUS SUBSTANCE which should be handled by trained staff only.

Storage: -20 °C

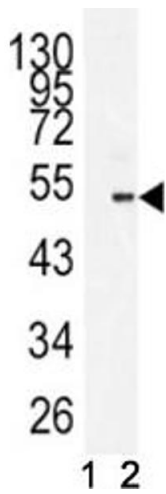
Storage Comment: Aliquot the BMI1 antibody and store frozen at -20°C or colder. Avoid repeated freeze-thaw cycles.

Images



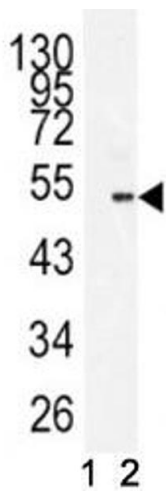
Immunohistochemistry

Image 1. IHC analysis of FFPE human skeletal muscle stained with BMI1 antibody



Western Blotting

Image 2. Western blot analysis of BMI1 antibody and 293 lysate in the presence (1) and absence (2) of immunizing peptide.



Western Blotting

Image 3. Western blot analysis of BMI1 antibody antibody and 293 lysate in the presence (1) and absence (2) of immunizing peptide.

Please check the [product details page](#) for more images. Overall 5 images are available for ABIN3028509.