

Datasheet for ABIN3028512  
**anti-BMP2 antibody (AA 260-289)**



[Go to Product page](#)

3 Images

### Overview

Quantity:	0.4 mL
Target:	BMP2
Binding Specificity:	AA 260-289
Reactivity:	Human
Host:	Rabbit
Clonality:	Polyclonal
Conjugate:	This BMP2 antibody is un-conjugated
Application:	Western Blotting (WB), ELISA, Flow Cytometry (FACS)

### Product Details

Immunogen:	A portion of amino acids 260-289 from the human protein was used as the immunogen for this BMP2 antibody.
Isotype:	Ig Fraction
Cross-Reactivity (Details):	Expected species reactivity: Mouse, Rat, Chicken
Purification:	Antigen affinity purified

### Target Details

Target:	BMP2
Alternative Name:	BMP2 ( <a href="#">BMP2 Products</a> )
Background:	The protein encoded by this gene belongs to the transforming growth factor-beta (TGFB)

## Target Details

---

superfamily. The encoded protein acts as a disulfide-linked homodimer and induces bone and cartilage formation.

UniProt: [P12643](#)

Pathways: [Regulation of Hormone Metabolic Process](#), [Regulation of Hormone Biosynthetic Process](#), [Regulation of Muscle Cell Differentiation](#), [Growth Factor Binding](#), [Positive Regulation of fat Cell Differentiation](#)

## Application Details

---

Application Notes: Titration of the BMP2 antibody may be required due to differences in protocols and secondary/substrate sensitivity.\. Western blot: 1:1000,Flow Cytometry: 1:10-1:50

Restrictions: For Research Use only

## Handling

---

Format: Liquid

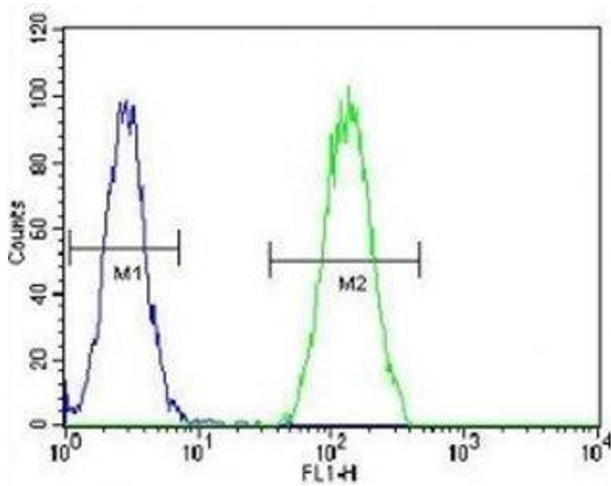
Buffer: In 1X PBS, pH 7.4, with 0.09 % sodium azide

Preservative: Sodium azide

Precaution of Use: This product contains Sodium azide: a POISONOUS AND HAZARDOUS SUBSTANCE which should be handled by trained staff only.

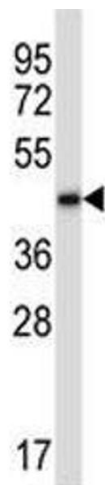
Storage: -20 °C

Storage Comment: Aliquot the BMP2 antibody and store frozen at -20°C or colder. Avoid repeated freeze-thaw cycles.



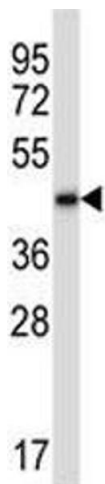
### Flow Cytometry

**Image 1.** BMP2 antibody flow cytometric analysis of HeLa cells (green) compared to a negative control (blue). FITC-conjugated goat-anti-rabbit secondary Ab was used for the analysis.



### Western Blotting

**Image 2.** BMP2 antibody western blot analysis in CEM lysate. Predicted molecular weight ~45 kDa.



### Western Blotting

**Image 3.** BMP2 antibody western blot analysis in CEM lysate. Predicted molecular weight ~45 kDa.