

Datasheet for ABIN3028515  
**anti-BMP8A antibody (AA 271-298)**[Go to Product page](#)

## 2 Images

## Overview

Quantity:	0.4 mL
Target:	BMP8A
Binding Specificity:	AA 271-298
Reactivity:	Human
Host:	Rabbit
Clonality:	Polyclonal
Conjugate:	This BMP8A antibody is un-conjugated
Application:	Western Blotting (WB), ELISA

## Product Details

Immunogen:	A portion of amino acids 271-298 from the human protein was used as the immunogen for this BMP8A antibody.
Isotype:	Ig Fraction
Purification:	Antigen affinity purified

## Target Details

Target:	BMP8A
Alternative Name:	BMP8A ( <a href="#">BMP8A Products</a> )
Background:	Induces cartilage and bone formation. May be the osteoinductive factor responsible for the phenomenon of epithelial osteogenesis. Plays a role in calcium regulation and bone homeostasis (By similarity). [UniProt]

## Target Details

UniProt:	<a href="#">Q7Z5Y6</a>
Pathways:	<a href="#">Negative Regulation of Hormone Secretion</a>

## Application Details

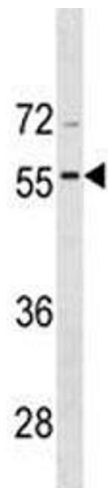
Application Notes:	Titration of the BMP8A antibody may be required due to differences in protocols and secondary/substrate sensitivity.\. Western blot: 1:1000
Restrictions:	For Research Use only
Handling	
Format:	Liquid
Buffer:	In 1X PBS, pH 7.4, with 0.09 % sodium azide
Preservative:	Sodium azide
Precaution of Use:	This product contains Sodium azide: a POISONOUS AND HAZARDOUS SUBSTANCE which should be handled by trained staff only.
Storage:	-20 °C
Storage Comment:	Aliquot the BMP8A antibody and store frozen at -20°C or colder. Avoid repeated freeze-thaw cycles.

## Images



### Western Blotting

**Image 1.** BMP8A antibody western blot analysis in CEM lysate



Western Blotting

**Image 2.** BMP8A antibody western blot analysis in CEM lysate