

Datasheet for ABIN3028521
anti-CCR1 antibody (AA 343-355)[Go to Product page](#)

2 Images

Overview

Quantity:	0.4 mL
Target:	CCR1
Binding Specificity:	AA 343-355
Reactivity:	Human
Host:	Rabbit
Clonality:	Polyclonal
Conjugate:	This CCR1 antibody is un-conjugated
Application:	ELISA, Western Blotting (WB)

Product Details

Immunogen:	This CCR1 antibody was produced from a rabbit immunized with a KLH conjugated synthetic peptide between 343-355 amino acids from the C-terminal region of human CCR1.
Isotype:	Ig Fraction
Purification:	Antigen affinity purified

Target Details

Target:	CCR1
Alternative Name:	CCR1 (CCR1 Products)
Background:	Receptor for a C-C type chemokine. Binds to MIP-1-alpha, MIP-1-delta, RANTES, and MCP-3 and, less efficiently, to MIP-1- beta or MCP-1 and subsequently transduces a signal by increasing the intracellular calcium ions level. Responsible for affecting stem cell proliferation.

Target Details

UniProt: [P32246](#)

Application Details

Application Notes: Titration of the CCR1 antibody may be required due to differences in protocols and secondary/substrate sensitivity.\. Western blot: 1:2000

Restrictions: For Research Use only

Handling

Format: Liquid

Buffer: In 1X PBS, pH 7.4, with 0.09 % sodium azide

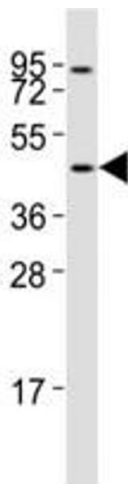
Preservative: Sodium azide

Precaution of Use: This product contains Sodium azide: a POISONOUS AND HAZARDOUS SUBSTANCE which should be handled by trained staff only.

Storage: -20 °C

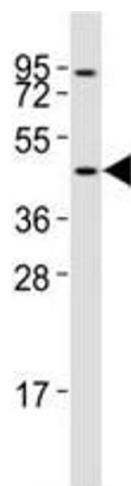
Storage Comment: Aliquot the CCR1 antibody and store frozen at -20°C or colder. Avoid repeated freeze-thaw cycles.

Images



Western Blotting

Image 1. Western blot testing of CCR1 antibody at 1:2000 dilution + Jurkat lysate



Western Blotting

Image 2. Western blot testing of CCR1 antibody at 1:2000 dilution + Jurkat lysate; Predicted band size : 40-45 kDa.