

Datasheet for ABIN3028528
anti-CNR2 antibody (AA 18-53)



[Go to Product page](#)

2 Images

Overview

Quantity:	0.4 mL
Target:	CNR2
Binding Specificity:	AA 18-53
Reactivity:	Human
Host:	Rabbit
Clonality:	Polyclonal
Conjugate:	This CNR2 antibody is un-conjugated
Application:	Western Blotting (WB), ELISA

Product Details

Immunogen:	This CB2 antibody was produced from a rabbit immunized with a KLH conjugated synthetic peptide between 18-53 amino acids from the N-terminal region of human Cannabinoid receptor 2.
Isotype:	Ig Fraction
Purification:	Antigen affinity purified

Target Details

Target:	CNR2
Alternative Name:	CB2 (CNR2 Products)
Background:	Cannabinoid receptor 2 is a heterotrimeric G protein-coupled receptor for endocannabinoid 2-arachidonoylglycerol mediating inhibition of adenylate cyclase. May function in inflammatory

Target Details

response, nociceptive transmission and bone homeostasis.

UniProt: [P34972](#)

Application Details

Application Notes: Titration of the CB2 antibody may be required due to differences in protocols and secondary/substrate sensitivity.\. Western blot: 1:2000

Restrictions: For Research Use only

Handling

Format: Liquid

Buffer: In 1X PBS, pH 7.4, with 0.09 % sodium azide

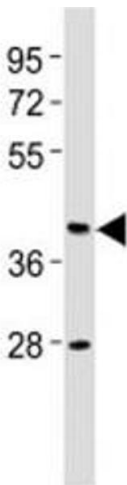
Preservative: Sodium azide

Precaution of Use: This product contains Sodium azide: a POISONOUS AND HAZARDOUS SUBSTANCE which should be handled by trained staff only.

Storage: -20 °C

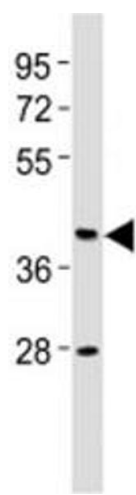
Storage Comment: Aliquot the CB2 antibody and store frozen at -20°C or colder. Avoid repeated freeze-thaw cycles.

Images



Western Blotting

Image 1. Western blot testing of CB2 antibody at 1:2000 dilution + human brain lysate. Predicted molecular weight ~38 kDa.



Western Blotting

Image 2. Western blot testing of CB2 antibody at 1:2000 dilution + human brain lysate. Predicted molecular weight ~38 kDa.