

Datasheet for ABIN3028532
anti-CPD antibody (AA 1019-1048)[Go to Product page](#)

2 Images

Overview

| | |
|----------------------|------------------------------------|
| Quantity: | 0.4 mL |
| Target: | CPD |
| Binding Specificity: | AA 1019-1048 |
| Reactivity: | Human |
| Host: | Rabbit |
| Clonality: | Polyclonal |
| Conjugate: | This CPD antibody is un-conjugated |
| Application: | Western Blotting (WB), ELISA |

Product Details

| | |
|-----------------------------|--|
| Immunogen: | A portion of amino acids 1019-1048 from the human protein was used as the immunogen for this CPD antibody. |
| Isotype: | Ig Fraction |
| Cross-Reactivity (Details): | Expected species reactivity: Mouse, Rat |
| Purification: | Purified |

Target Details

| | |
|-------------------|---|
| Target: | CPD |
| Alternative Name: | CPD (CPD Products) |
| Background: | The metallopeptidase family of enzymes is divided into 2 subfamilies based on |

Target Details

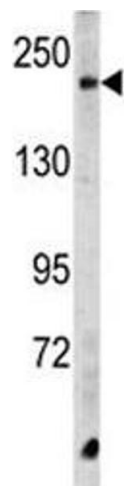
sequence similarities. The pancreatic carboxypeptidase-like and the regulatory B-type carboxypeptidase subfamilies. Carboxypeptidase D has been identified as a regulatory B-type carboxypeptidase. CPD is a homolog of duck gp180, a hepatitis B virus-binding protein.

| | |
|-----------|--|
| UniProt: | O75976 |
| Pathways: | Synaptic Membrane , Regulation of G-Protein Coupled Receptor Protein Signaling |

Application Details

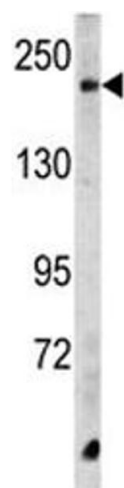
| | |
|--------------------|---|
| Application Notes: | Titration of the CPD antibody may be required due to differences in protocols and secondary/substrate sensitivity.\. Western blot: 1:1000 |
| Restrictions: | For Research Use only |
| Handling | |
| Format: | Liquid |
| Buffer: | In 1X PBS, pH 7.4, with 0.09 % sodium azide |
| Preservative: | Sodium azide |
| Precaution of Use: | This product contains Sodium azide: a POISONOUS AND HAZARDOUS SUBSTANCE which should be handled by trained staff only. |
| Storage: | -20 °C |
| Storage Comment: | Aliquot the CPD antibody and store frozen at -20°C or colder. Avoid repeated freeze-thaw cycles. |

Images



Western Blotting

Image 1. Western blot analysis of CPD antibody and HeLa lysate.



Western Blotting

Image 2. Western blot analysis of CPD antibody and HeLa lysate.