

Datasheet for ABIN3028533  
**anti-CEA antibody (AA 400-429)**

## 5 Images

[Go to Product page](#)

## Overview

Quantity:	0.4 mL
Target:	CEA
Binding Specificity:	AA 400-429
Reactivity:	Human
Host:	Rabbit
Clonality:	Polyclonal
Conjugate:	This CEA antibody is un-conjugated
Application:	Western Blotting (WB), Immunohistochemistry (IHC), ELISA, Flow Cytometry (FACS)

## Product Details

Immunogen:	A portion of amino acids 400-429 from the human protein was used as the immunogen for this CEA antibody.
Isotype:	Ig Fraction
Purification:	Purified

## Target Details

Target:	CEA
Alternative Name:	CEA ( <a href="#">CEA Products</a> )
Background:	CEA is a cell surface glycoprotein that plays a role in cell adhesion and in intracellular signaling. It is a receptor for E.coli Dr adhesins.

## Target Details

UniProt: [P06731](#)

## Application Details

Application Notes: Titration of the CEA antibody may be required due to differences in protocols and secondary/substrate sensitivity.\. Western blot: 1:1000,IHC (Paraffin): 1:50-1:100,Flow Cytometry: 1:10-1:50

Restrictions: For Research Use only

## Handling

Format: Liquid

Buffer: In 1X PBS, pH 7.4, with 0.09 % sodium azide

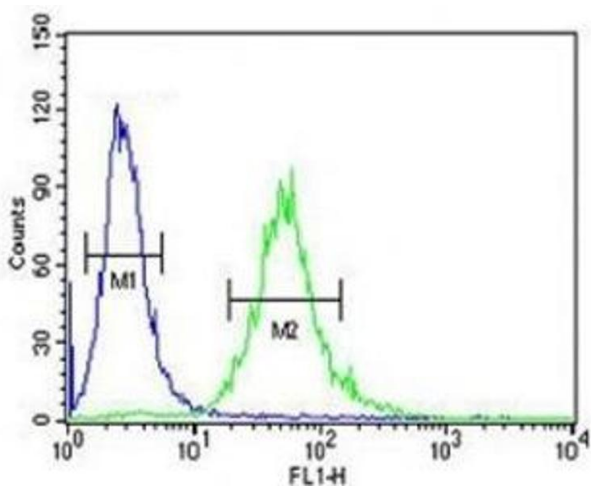
Preservative: Sodium azide

Precaution of Use: This product contains Sodium azide: a POISONOUS AND HAZARDOUS SUBSTANCE which should be handled by trained staff only.

Storage: -20 °C

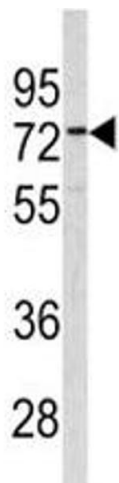
Storage Comment: Aliquot the CEA antibody and store frozen at -20°C or colder. Avoid repeated freeze-thaw cycles.

## Images



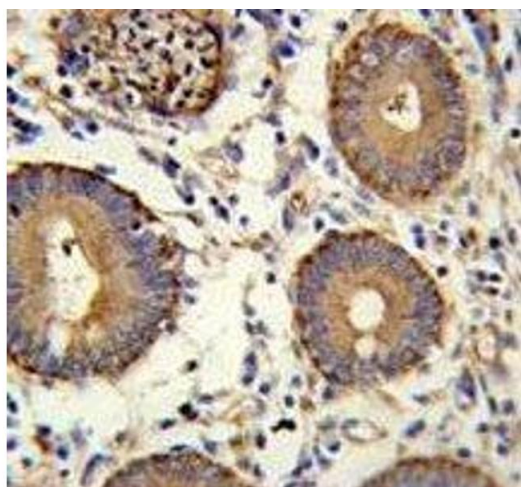
### Flow Cytometry

**Image 1.** CEA antibody flow cytometric analysis of 293 cells (right histogram) compared to a negative control (left histogram). FITC-conjugated goat-anti-rabbit secondary Ab was used for the analysis.



#### Western Blotting

**Image 2.** Western blot analysis of CEA antibody and 293 lysate



#### Immunohistochemistry

**Image 3.** CEA antibody immunohistochemistry analysis in formalin fixed and paraffin embedded human colon carcinoma.

Please check the [product details page](#) for more images. Overall 5 images are available for ABIN3028533.