

Datasheet for ABIN3028534
anti-CPT1B antibody (AA 606-637)[Go to Product page](#)

3 Images

Overview

Quantity:	0.4 mL
Target:	CPT1B
Binding Specificity:	AA 606-637
Reactivity:	Human
Host:	Rabbit
Clonality:	Polyclonal
Conjugate:	This CPT1B antibody is un-conjugated
Application:	Western Blotting (WB), ELISA, Immunohistochemistry (IHC)

Product Details

Immunogen:	A portion of amino acids 606-637 from the human protein was used as the immunogen for this CPT1B antibody.
Isotype:	Ig Fraction
Purification:	Purified

Target Details

Target:	CPT1B
Alternative Name:	CPT1B (CPT1B Products)
Background:	CPT1B is a member of the carnitine/choline acetyltransferase family, and is the rate-controlling enzyme of the long-chain fatty acid beta-oxidation pathway in muscle mitochondria. This enzyme is required for the net transport of long-chain fatty acyl-CoAs from the cytoplasm into

Target Details

the mitochondria.

UniProt: [Q92523](#)

Pathways: [AMPK Signaling](#), [Monocarboxylic Acid Catabolic Process](#)

Application Details

Application Notes: Titration of the CPT1B antibody may be required due to differences in protocols and secondary/substrate sensitivity.\. Western blot: 1:1000,IHC (Paraffin): 1:50-1:100

Restrictions: For Research Use only

Handling

Format: Liquid

Buffer: In 1X PBS, pH 7.4, with 0.09 % sodium azide

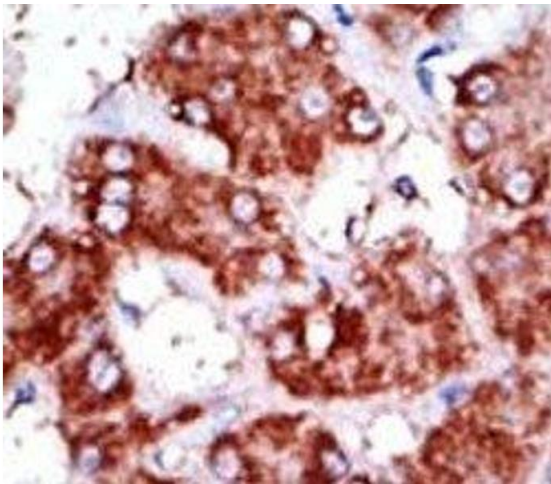
Preservative: Sodium azide

Precaution of Use: This product contains Sodium azide: a POISONOUS AND HAZARDOUS SUBSTANCE which should be handled by trained staff only.

Storage: -20 °C

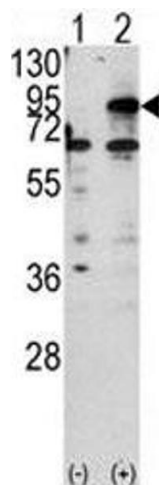
Storage Comment: Aliquot the CPT1B antibody and store frozen at -20°C or colder. Avoid repeated freeze-thaw cycles.

Images



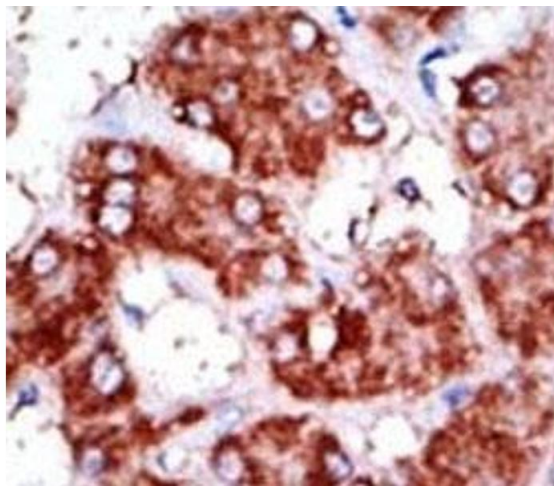
Immunohistochemistry

Image 1. IHC analysis of FFPE human hepatocarcinoma tissue stained with the CPT1B antibody



Western Blotting

Image 2. Western blot analysis of CPT1B antibody and 293 cell lysate either nontransfected (Lane 1) or transiently transfected with the CPT1B gene (2).



Immunohistochemistry

Image 3. IHC analysis of FFPE human hepatocarcinoma tissue stained with the CPT1B antibody