



Datasheet for ABIN3028538
anti-Cathepsin Q antibody (AA 192-221)



[Go to Product page](#)

2 Images

Overview

Quantity:	0.4 mL
Target:	Cathepsin Q (CTSQ)
Binding Specificity:	AA 192-221
Reactivity:	Mouse
Host:	Rabbit
Clonality:	Polyclonal
Conjugate:	This Cathepsin Q antibody is un-conjugated
Application:	Western Blotting (WB), ELISA

Product Details

Immunogen:	A portion of amino acids 192-221 from the mouse protein was used as the immunogen for this Cathepsin Q antibody.
Isotype:	Ig Fraction
Purification:	Antigen affinity purified

Target Details

Target:	Cathepsin Q (CTSQ)
Alternative Name:	Cathepsin Q (CTSQ Products)
UniProt:	Q91ZF4

Application Details

Application Notes: Titration of the Cathepsin Q antibody may be required due to differences in protocols and secondary/substrate sensitivity.\. Western blot: 1:1000

Restrictions: For Research Use only

Handling

Format: Liquid

Buffer: In 1X PBS pH 7.4 with 0.09 % sodium azide

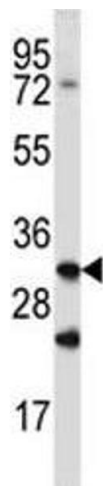
Preservative: Sodium azide

Precaution of Use: This product contains Sodium azide: a POISONOUS AND HAZARDOUS SUBSTANCE which should be handled by trained staff only.

Storage: -20 °C

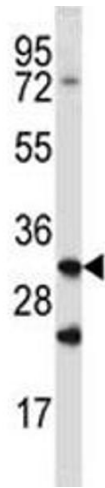
Storage Comment: Aliquot the Cathepsin Q antibody and store frozen at -20°C or colder. Avoid repeated freeze-thaw cycles.

Images



Western Blotting

Image 1. Cathepsin Q antibody western blot analysis in mouse spleen tissue lysate



Western Blotting

Image 2. Cathepsin Q antibody western blot analysis in mouse spleen tissue lysate